



RISE KRISHNA SAI PRAKASAM GROUP OF INSTITUTIONS::ONGOLE

(Approved by AICTE-NEW DELHI, Affiliated to JNTUK KAKINADA)

(An ISO 9001:2015 certified institute)

NH-16, Valluru,-523272, Ongole, Prakasam District, A.P

INTERNAL QUALITY ASSURANCE CELL (IQAC)

ANALYSIS OF FACULTY FEEDBACK ON CURRICULUM

| Programme Name | Department Name | Academic Year | Semester |
|----------------|------------------------|---------------|----------|
| B.TECH | MECHANICAL ENGINEERING | 2019-20 | I |

| S.No | Question | Excellent | Very Good | Good | Average | Poor |
|------|--|-----------|-----------|------|---------|------|
| 1 | How do you rate the programme offered in terms of the load of courses in different semesters? | 75 | 20 | 5 | 0 | 0 |
| 2 | How do you rate the availability of the text and reference books in the market? | 80 | 20 | 0 | 0 | 0 |
| 3 | How do you rate the quality and relevance of the courses included in the curriculum? | 60 | 25 | 15 | 0 | 0 |
| 4 | How do you rate the treatment of the students irrespective of their background (gender, caste, community, creed, etc.) in teaching and evaluation? | 75 | 25 | 0 | 0 | 0 |
| 5 | How do you rate the ambiance of the College for effective delivery of the academic process? | 80 | 10 | 10 | 0 | 0 |
| 6 | How do you rate the courses in terms of their relevance to the latest and/or the future technologies? | 75 | 15 | 10 | 0 | 0 |
| 7 | How do you rate the outcomes that your student has achieved from the courses? | 65 | 20 | 15 | 0 | 0 |
| 8 | How do you rate the transparency of the evaluation system in the College? | 70 | 20 | 10 | 0 | 0 |
| 9 | How do you rate the college activities that help your students in getting jobs on campus or off campus? | 60 | 30 | 10 | 0 | 0 |
| 10 | How do you rate the transformation of your students after the completion of course? | 70 | 30 | 0 | 0 | 0 |

PRINCIPAL
RISE KRISHNA SAI PRAKASAM
GROUP OF INSTITUTIONS
VALLUR - ONGOLE.

Head of the Department
Mechanical Engineering
RISE Krishna Sai Prakasam
Group of Institutions.
Ongole-523 272



RISE KRISHNA SAI PRAKASAM GROUP OF INSTITUTIONS::ONGOLE

(Approved by AICTE-NEW DELHI, Affiliated to JNTUK KAKINADA)

(An ISO 9001:2015 certified Institute)

NH-16, Valluru,-523272, Ongole, Prakasam District, A.P

FACULTY FEEDBACK ANALYSIS

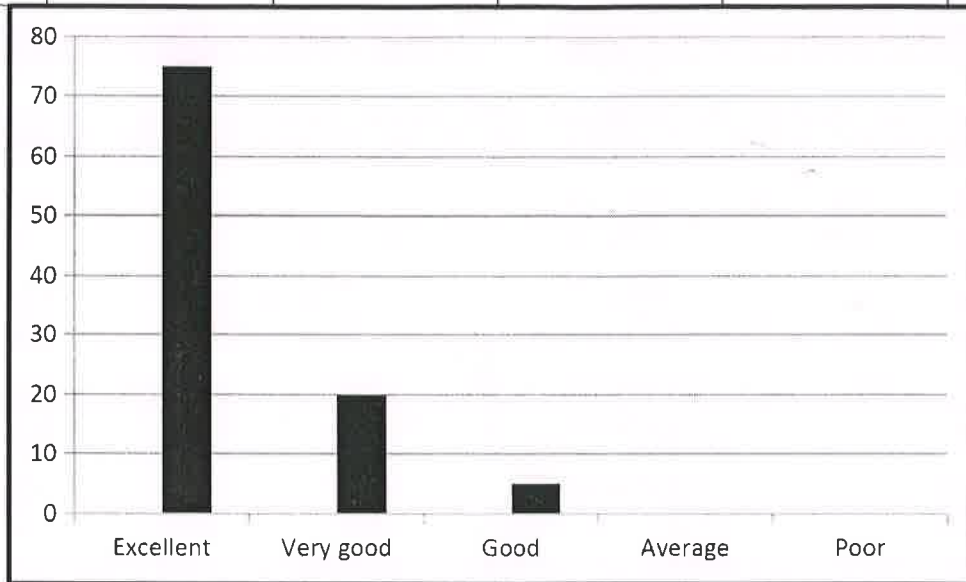
DEPARTMENT OF MECHANICAL ENGINEERING

ACADEMIC YEAR 2019-20

SEMESTER-I

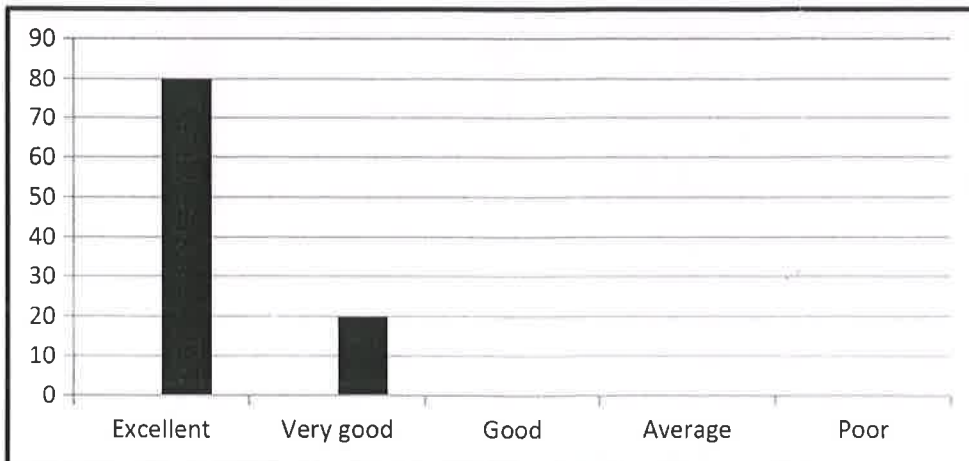
1. How do you rate the programme offered in terms of the load of courses in different semesters?

| Excellent | Very good | Good | Average | Poor |
|-----------|-----------|------|---------|------|
| 75 | 20 | 5 | 0 | 0 |



2. How do you rate the availability of the text and reference books in the market?

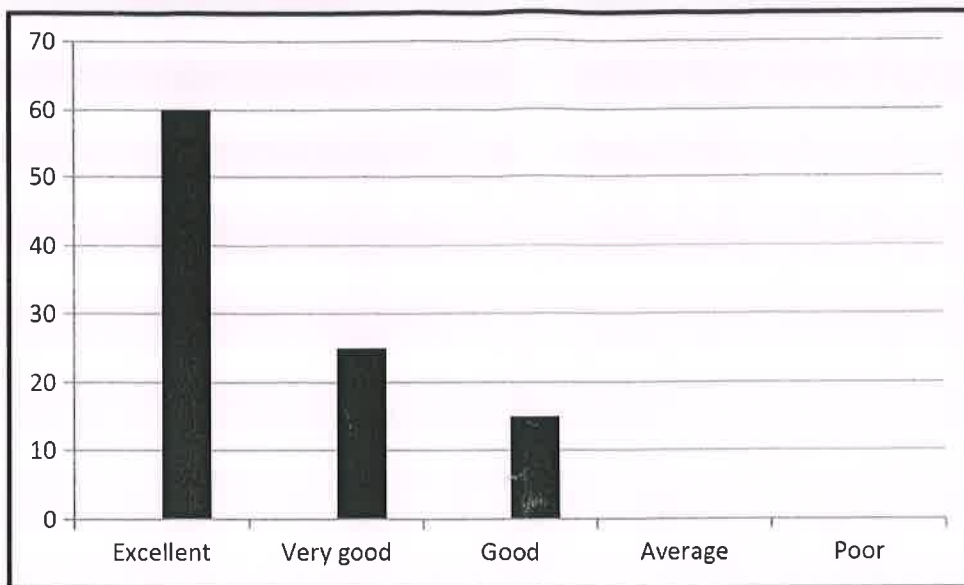
| Excellent | Very good | Good | Average | Poor |
|-----------|-----------|------|---------|------|
| 80 | 20 | 0 | 0 | 0 |



PRINCIPAL
RISE KRISHNA SAI PRAKASAM
GROUP OF INSTITUTIONS

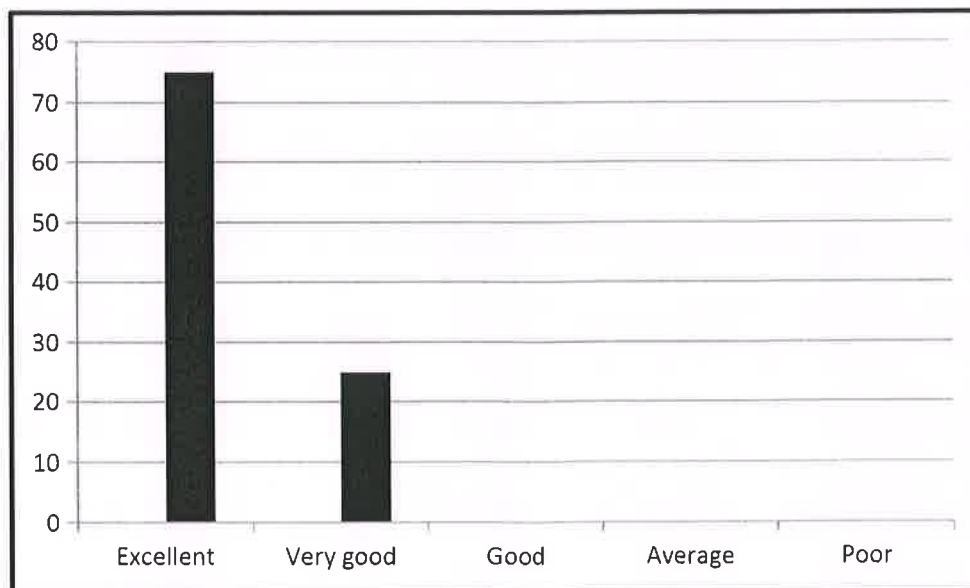
3. How do you rate the quality and relevance of the courses included in the curriculum?

| Excellent | Very good | Good | Average | Poor |
|-----------|-----------|------|---------|------|
| 60 | 25 | 15 | 0 | 0 |



4. How do you rate the treatment of the students irrespective of their background (gender, caste, community, creed, etc.) in teaching and evaluation?

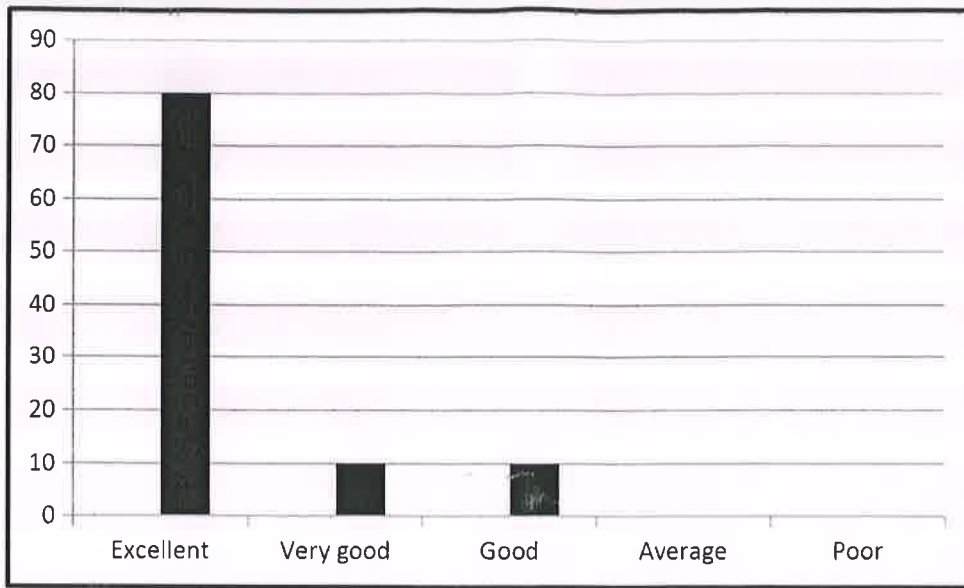
| Excellent | Very good | Good | Average | Poor |
|-----------|-----------|------|---------|------|
| 75 | 25 | 0 | 0 | 0 |




PRINCIPAL
RISE KRISHNA SAI PRAKASAM
GROUP OF INSTITUTIONS
VILLUP - ONGOLE.

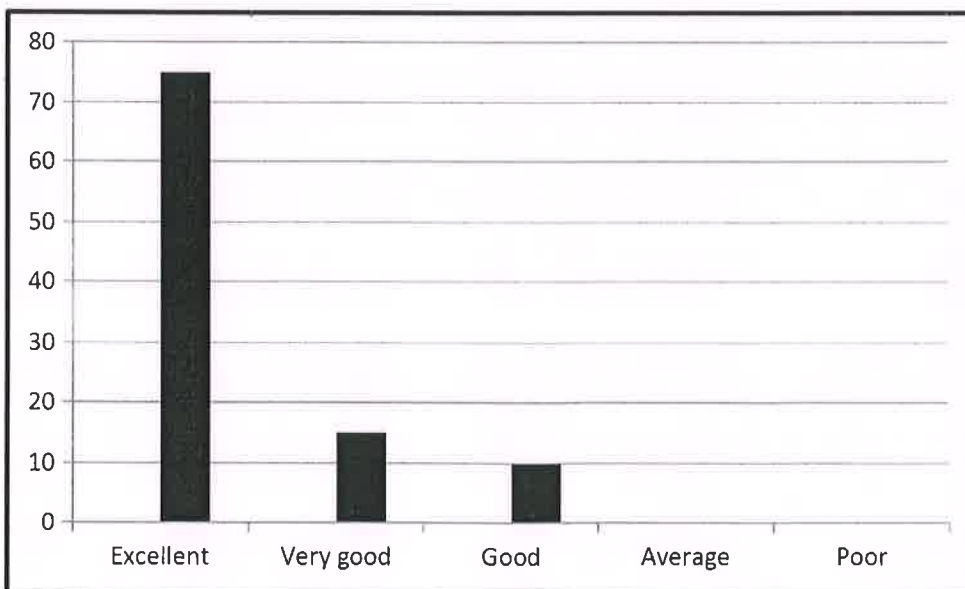
5. How do you rate the ambiance of the College for effective delivery of the academic process?

| Excellent | Very good | Good | Average | Poor |
|-----------|-----------|------|---------|------|
| 80 | 10 | 10 | 0 | 0 |



6. How do you rate the courses in terms of their relevance to the latest and/or the future technologies?

| Excellent | Very good | Good | Average | Poor |
|-----------|-----------|------|---------|------|
| 75 | 15 | 10 | 0 | 0 |

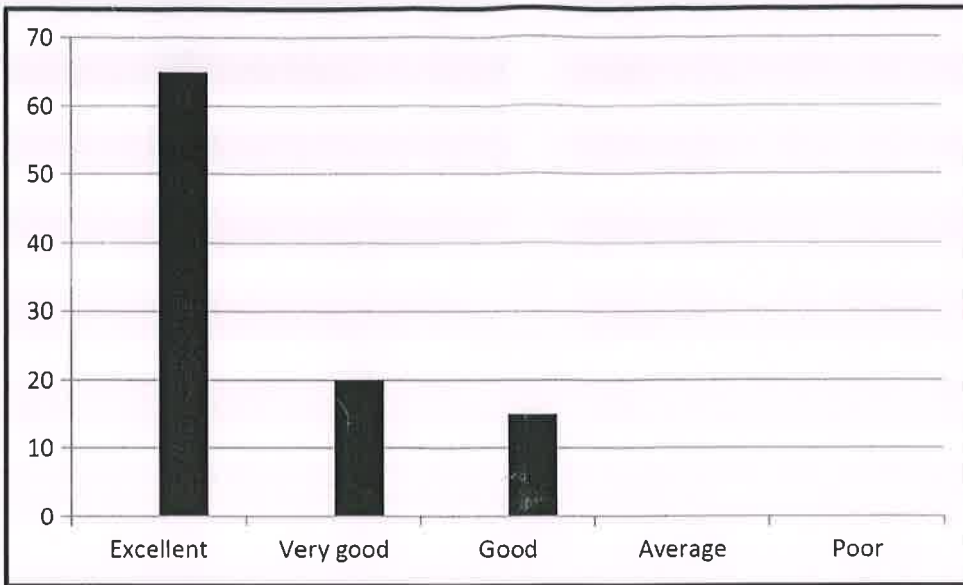


[Handwritten Signature]

PRINCIPAL
RISE KRISHNA SAI PRAKASH
GROUP OF INSTITUTIONS
VALLUR - ONGOLE.

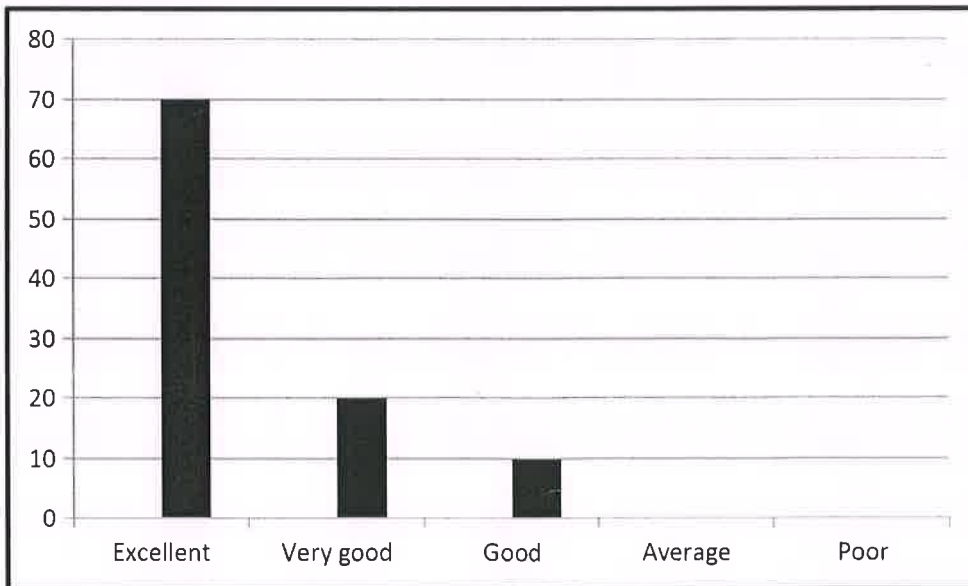
7. How do you rate the outcomes that your student has achieved from the courses?

| Excellent | Very good | Good | Average | Poor |
|-----------|-----------|------|---------|------|
| 65 | 20 | 15 | 0 | 0 |



8. How do you rate the transparency of the evaluation system in the College?

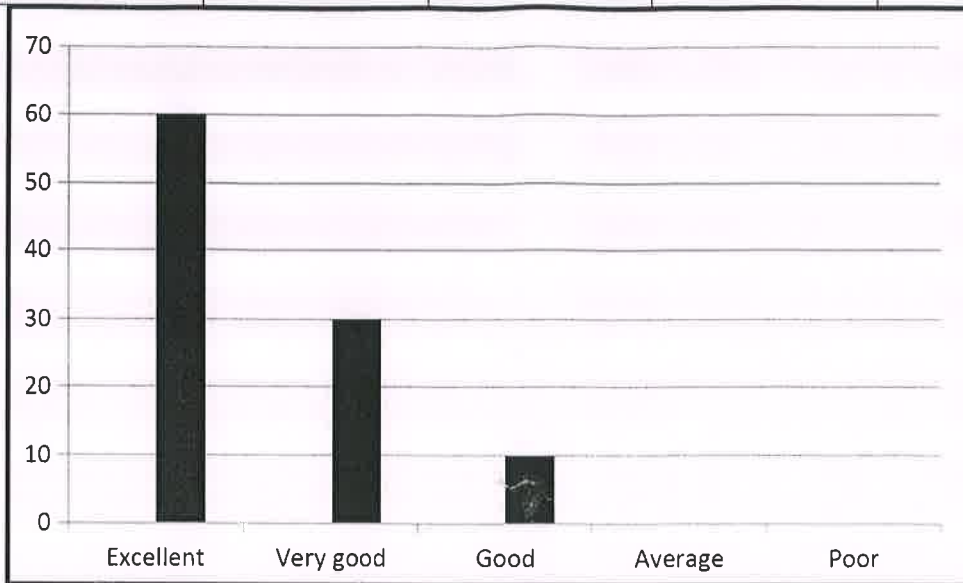
| Excellent | Very good | Good | Average | Poor |
|-----------|-----------|------|---------|------|
| 70 | 20 | 10 | 0 | 0 |



[Handwritten Signature]
 PRINCIPAL
 RISE KRISHNA SAI PRAKASAM
 GROUP OF INSTITUTIONS
 VALLUR - ONGOLE.

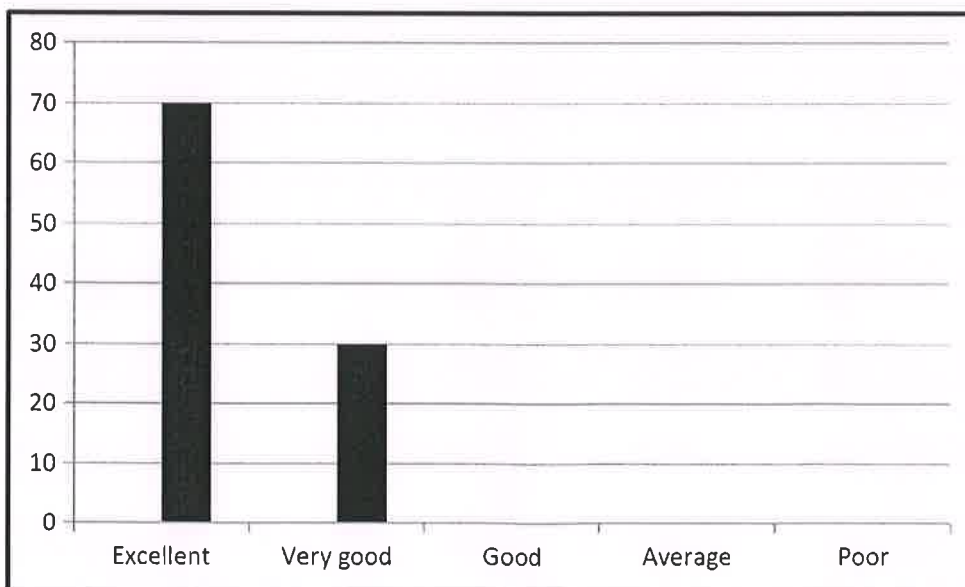
9. How do you rate the college activities that help your students in getting jobs on campus or off campus?

| Excellent | Very good | Good | Average | Poor |
|-----------|-----------|------|---------|------|
| 60 | 30 | 10 | 0 | 0 |



10. How do you rate the transformation of your students after the completion of course?

| Excellent | Very good | Good | Average | Poor |
|-----------|-----------|------|---------|------|
| 70 | 30 | 0 | 0 | 0 |



[Signature]
PRINCIPAL
RISE KRISHNA SAI PRAKASAM
GROUP OF INSTITUTIONS
VALLUR - ONGOLE

[Signature]
Head of the Department
Mechanical Engineering
RISE Krishna Sai Prakasham
Group of Institutions,
Ongole-523 272



RISE KRISHNA SAI PRAKASAM GROUP OF INSTITUTIONS::ONGOLE

(Approved by AICTE-NEW DELHI, Affiliated to JNTUK KAKINADA)

(An ISO 9001:2015 certified Institute)

DEPARTMENT OF MASTER OF COMPUTER APPLICATIONS INTERNAL QUALITY ASSURANCE CELL (IQAC)

ANALYSIS OF FACULTY FEEDBACK ON CURRICULUM

| Programme Name | Department Name | Academic Year | Semester |
|----------------|---------------------------------|---------------|----------|
| PG | MASTER OF COMPUTER APPLICATIONS | 2019-20 | I |

| S.No | Question : | Excellent | Very Good | Good | Average | Poor |
|------|--|-----------|-----------|------|---------|------|
| 1 | How do you rate the programme offered in terms of the load of courses in different semesters? | 6 | 1 | 0 | 0 | 0 |
| 2 | How do you rate the availability of the text and reference books in the market? | 6 | 1 | 0 | 0 | 0 |
| 3 | How do you rate the quality and relevance of the courses included in the curriculum? | 6 | 1 | 0 | 0 | 0 |
| 4 | How do you rate the treatment of the students irrespective of their background (gender, caste, community, creed, etc.) in teaching and evaluation? | 7 | 0 | 0 | 0 | 0 |
| 5 | How do you rate the ambiance of the College for effective delivery of the academic process? | 6 | 1 | 0 | 0 | 0 |
| 6 | How do you rate the courses in terms of their relevance to the latest and/or the future technologies? | 5 | 1 | 1 | 0 | 0 |
| 7 | How do you rate the outcomes that your student has achieved from the courses? | 5 | 1 | 1 | 0 | 0 |
| 8 | How do you rate the transparency of the evaluation system in the College? | 7 | 0 | 0 | 0 | 0 |
| 9 | How do you rate the college activities that help your students in getting jobs on campus or off campus? | 6 | 1 | 0 | 0 | 0 |
| 10 | How do you rate the transformation of your students after the completion of course? | 7 | 0 | 0 | 0 | 0 |

PRINCIPAL
RISE KRISHNA SAI PRAKASAM
GROUP OF INSTITUTIONS
ONGOLE

HEAD OF THE DEPARTMENT
Department of M.C.A.
HOD
RISE Krishna Sai Prakasam Group
of Institutions VAI LURU A P-523 272



RISE KRISHNA SAI PRAKASAM GROUP OF INSTITUTIONS::ONGOLE

(Approved by AICTE-NEW DELHI, Affiliated to JNTUK KAKINADA)

(An-ISO 9001:2015 certified Institute)

DEPARTMENT OF MASTER OF COMPUTER APPLICATIONS

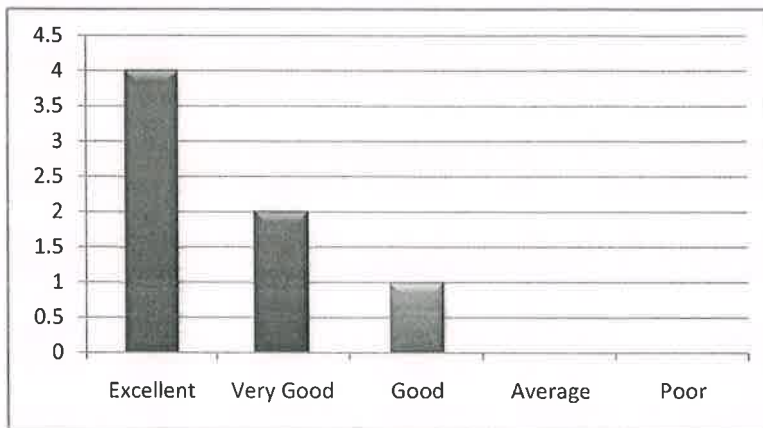
INTERNAL QUALITY ASSURANCE CELL (IQAC)

ANALYSIS OF FACULTY FEEDBACK ON CURRICULUM

| Programme Name | Department Name | Academic Year | Semester |
|----------------|-----------------|---------------|----------|
| PG | MCA | 2019-20 | I |

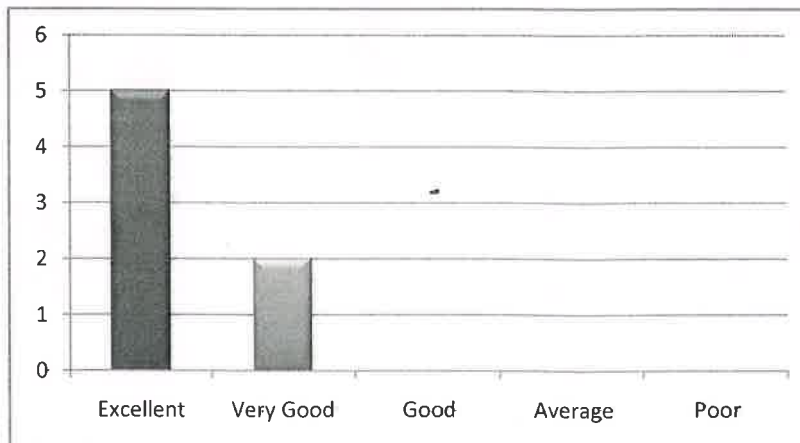
1. How do you rate the programme offered in terms of the load of courses in differnt semesters ?

| Excellent | Very Good | Good | Average | Poor |
|-----------|-----------|------|---------|------|
| 4 | 2 | 1 | 0 | 0 |



2. How do you rate the availability of the text and reference books in the market?

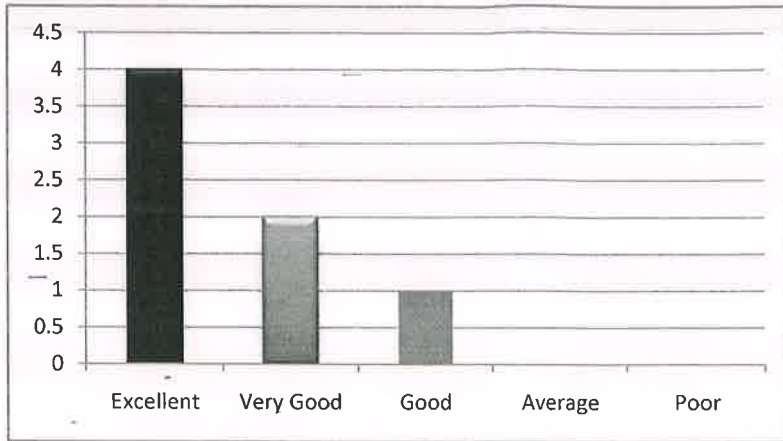
| Excellent | Very Good | Good | Average | Poor |
|-----------|-----------|------|---------|------|
| 5 | 2 | 0 | 0 | 0 |



PRINCIPAL
RISE KRISHNA SAI PRAKASAM
GROUP OF INSTITUTIONS
VALLUR - ONGOLE.

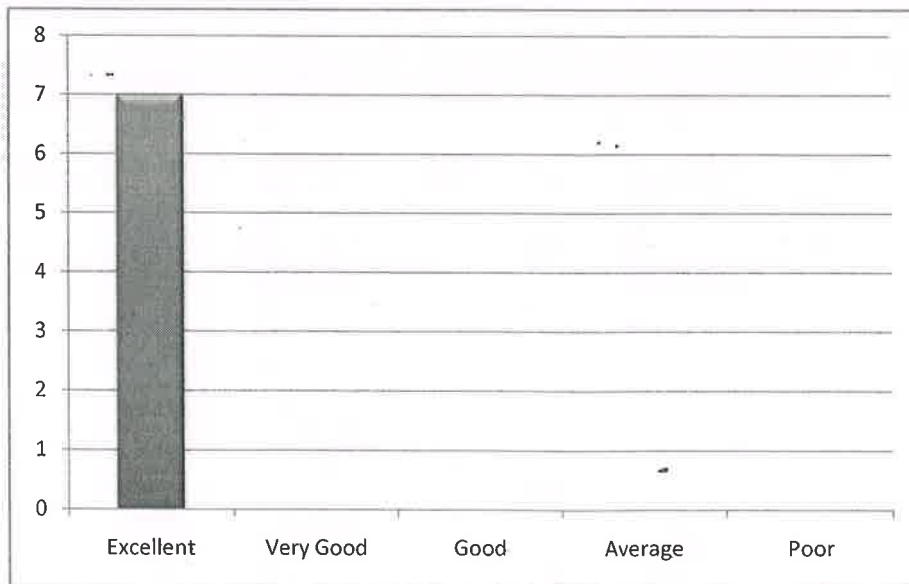
3. How do you rate the quality and relevance of the courses included in the curriculum?


| Excellent | Very Good | Good | Average | Poor |
|-----------|-----------|------|---------|------|
| 4 | 2 | 1 | 0 | 0 |



4. How do you rate the treatment of the students irrespective of their background (gender, cast, community, creed, ect.) in teaching and evaluation?

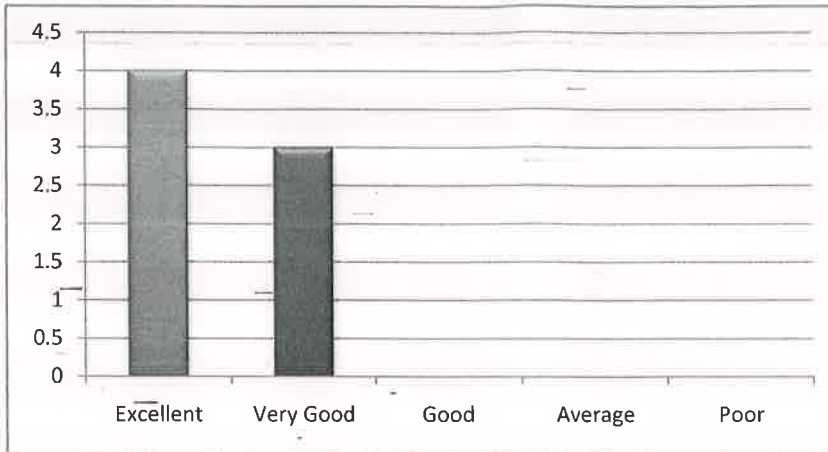
| Excellent | Very Good | Good | Average | Poor |
|-----------|-----------|------|---------|------|
| 7 | 0 | 0 | 0 | 0 |




 P. C. AL
 SE KRISHNA SAI PRAKASAM
 GROUP OF INSTITUTIONS
 VALLUR - ONGOLE

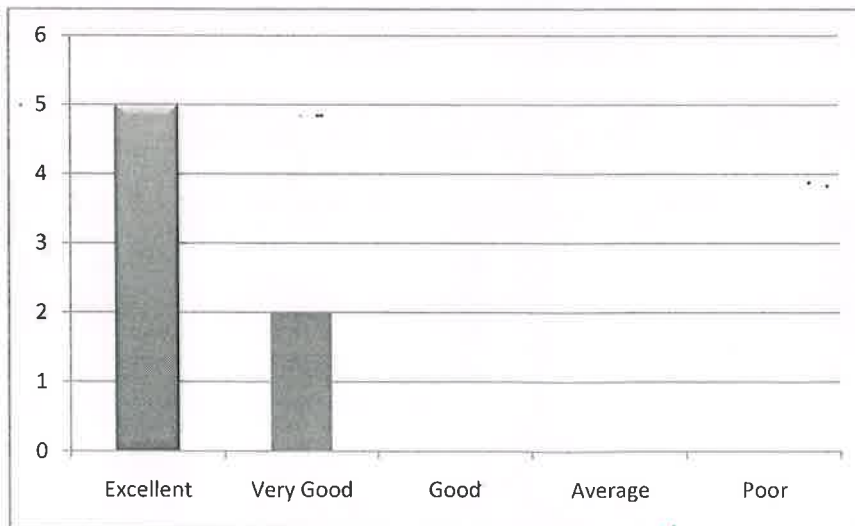
5. How do you rate the ambiance of the college for effective delivery of the academic process?

| Excellent | Very Good | Good | Average | Poor |
|-----------|-----------|------|---------|------|
| 4 | 3 | 0 | 0 | 0 |



6. How do you rate the courses in terms of their relevance to the latest and/or the future technologies ?

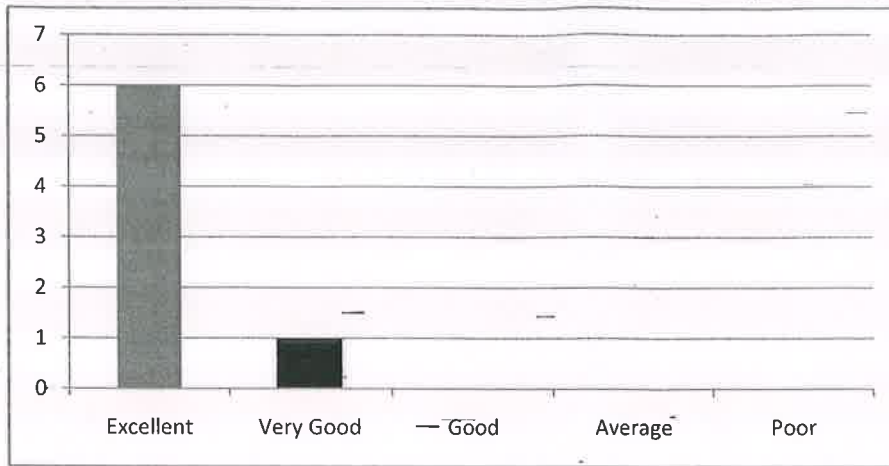
| Excellent | Very Good | Good | Average | Poor |
|-----------|-----------|------|---------|------|
| 5 | 2 | 0 | 0 | 0 |




 PRINCIPAL
 KRISHNA SAI PRAKASAM
 GROUP OF INSTITUTIONS
 VALLUR - ONGOLE.

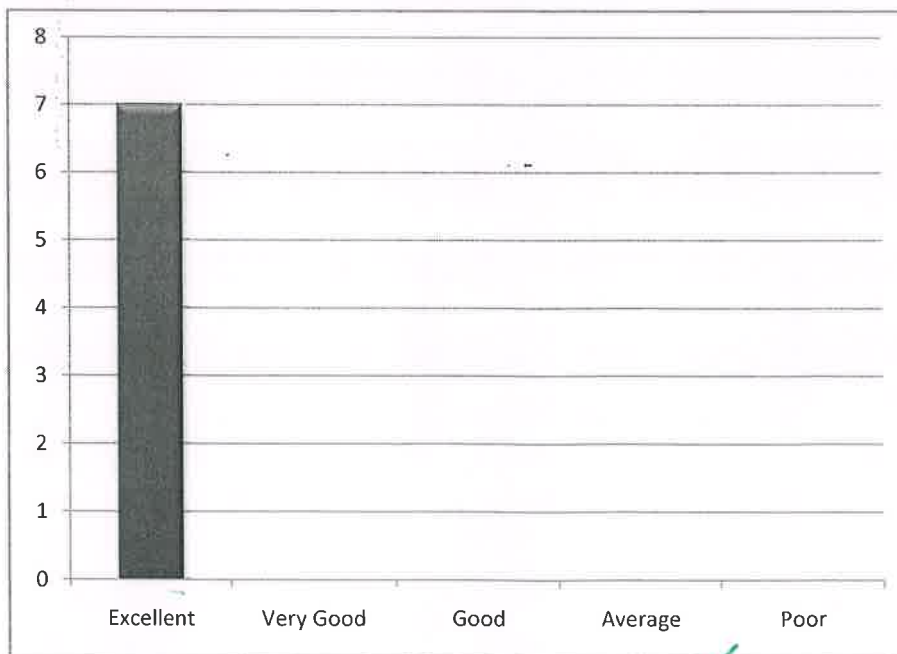
7. How do you rate the outcomes that your student has achieved from the courses ?

| Excellent | Very Good | Good | Average | Poor |
|-----------|-----------|------|---------|------|
| 6 | 1 | 0 | 0 | 0 |



8. How do you rate the transparency of the evaluation system in the college ?

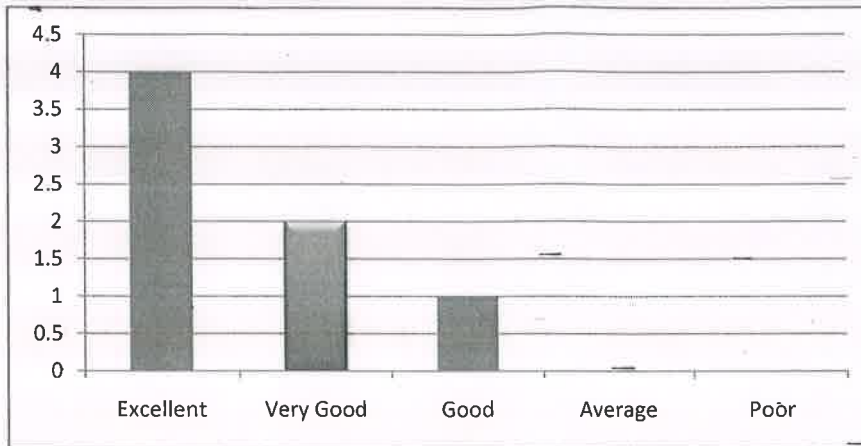
| Excellent | Very Good | Good | Average | Poor |
|-----------|-----------|------|---------|------|
| 7 | 0 | 0 | 0 | 0 |




 PRINCIPAL
 RISE KRISHNA SAI PRAKASAM
 GROUP OF INSTITUTIONS
 VALLUR - ONGOLE.

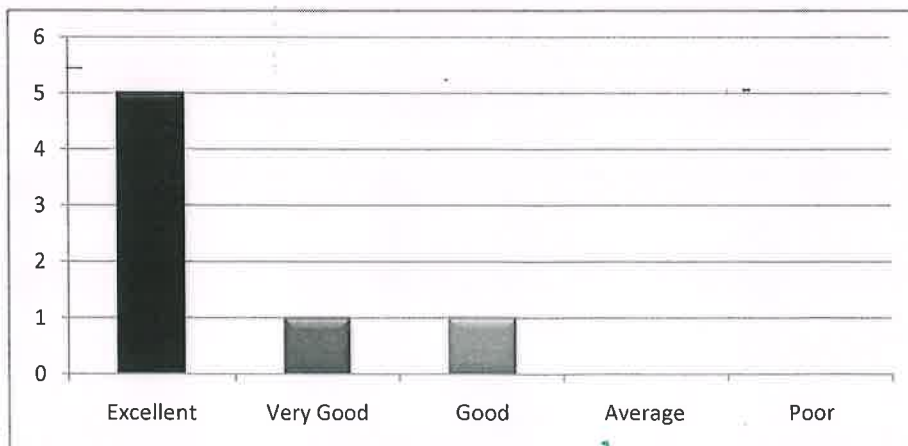
9. How do you rate the college activities that help your students in getting jobs on campus or off campus

| Excellent | Very Good | Good | Average | Poor |
|-----------|-----------|------|---------|------|
| 4 | 2 | 1 | 0 | 0 |



10. How do you rate the transformation of students after the completion of course ?

| Excellent | Very Good | Good | Average | Poor |
|-----------|-----------|------|---------|------|
| 5 | 1 | 1 | 0 | 0 |



[Signature]
HOD

HEAD OF THE DEPARTMENT
Department of M. C. A.
RISE Krishna Sai Prakasam Group
of Institutions, VALLURU, A.P.-523 272

[Signature]

PRINCIPAL
RISE KRISHNA SAI PRAKASAM
GROUP OF INSTITUTIONS
VALLUR - ONGOLE.



RISE KRISHNA SAI PRAKASAM GROUP OF INSTITUTIONS::ONGOLE

(Approved by AICTE-NEW DELHI, Affiliated to JNTUK KAKINADA)

(An ISO 9001:2015 certified institute)


NH-16, Valluru,-523272, Ongole, Prakasam District, A.P


INTERNAL QUALITY ASSURANCE CELL (IQAC)

ANALYSIS OF FACULTY FEEDBACK ON CURRICULUM

| Programme Name | Department Name | Academic Year | Semester |
|----------------|------------------------|---------------|----------|
| B.TECH | MECHANICAL ENGINEERING | 2019-20 | II |

| S.No | Question | Excellent | Very Good | Good | Average | Poor |
|------|--|-----------|-----------|------|---------|------|
| 1 | How do you rate the programme offered in terms of the load of courses in different semesters? | 70 | 20 | 10 | 0 | 0 |
| 2 | How do you rate the availability of the text and reference books in the market? | 85 | 15 | 0 | 0 | 0 |
| 3 | How do you rate the quality and relevance of the courses included in the curriculum? | 75 | 25 | 0 | 0 | 0 |
| 4 | How do you rate the treatment of the students irrespective of their background (gender, caste, community, creed, etc.) in teaching and evaluation? | 75 | 25 | 0 | 0 | 0 |
| 5 | How do you rate the ambiance of the College for effective delivery of the academic process? | 80 | 10 | 10 | 0 | 0 |
| 6 | How do you rate the courses in terms of their relevance to the latest and/or the future technologies? | 65 | 30 | 5 | 0 | 0 |
| 7 | How do you rate the outcomes that your student has achieved from the courses? | 85 | 15 | 0 | 0 | 0 |
| 8 | How do you rate the transparency of the evaluation system in the College? | 60 | 30 | 10 | 0 | 0 |
| 9 | How do you rate the college activities that help your students in getting jobs on campus or off campus? | 75 | 20 | 5 | 0 | 0 |
| 10 | How do you rate the transformation of your students after the completion of course? | 80 | 15 | 5 | 0 | 0 |


PRINCIPAL
RISE KRISHNA SAI PRAKASAM
GROUP OF INSTITUTIONS
VALLUR - ONGOLE.


Head of the Department
Mechanical Engineering
RISE Krishna Sai Prakasam
Group of Institutions.
Ongole-523 272



RISE KRISHNA SAI PRAKASAM GROUP OF INSTITUTIONS::ONGOLE

(Approved by AICTE-NEW DELHI, Affiliated to JNTUK KAKINADA)

(An ISO 9001:2015 certified Institute)

NH-16, Valluru,-523272, Ongole, Prakasam District, A.P

FACULTY FEEDBACK ANALYSIS

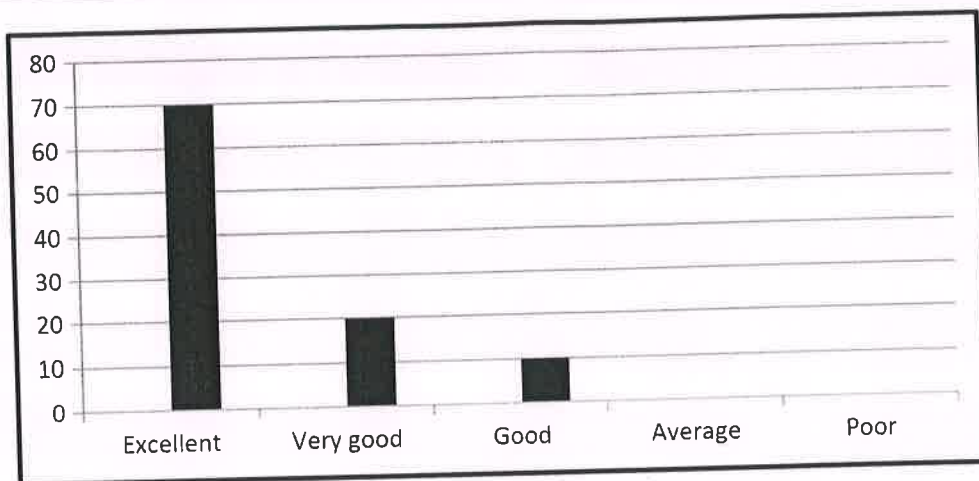
DEPARTMENT OF MECHANICAL ENGINEERING

ACADEMIC YEAR 2019-20

SEMESTER -II

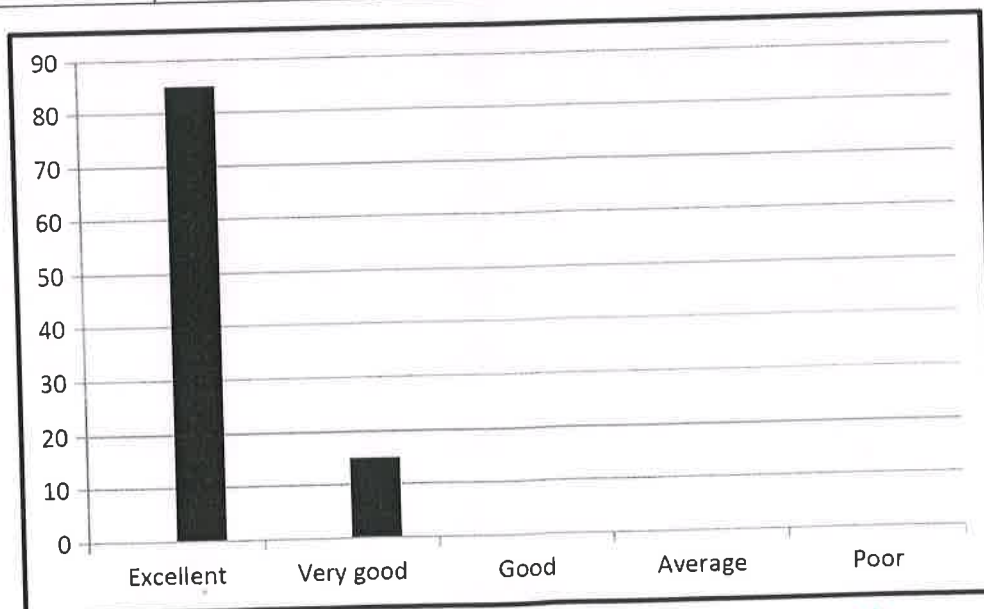
1. How do you rate the programme offered in terms of the load of courses in different semesters?

| Excellent | Very good | Good | Average | Poor |
|-----------|-----------|------|---------|------|
| 70 | 20 | 10 | 0 | 0 |



2. How do you rate the availability of the text and reference books in the market?

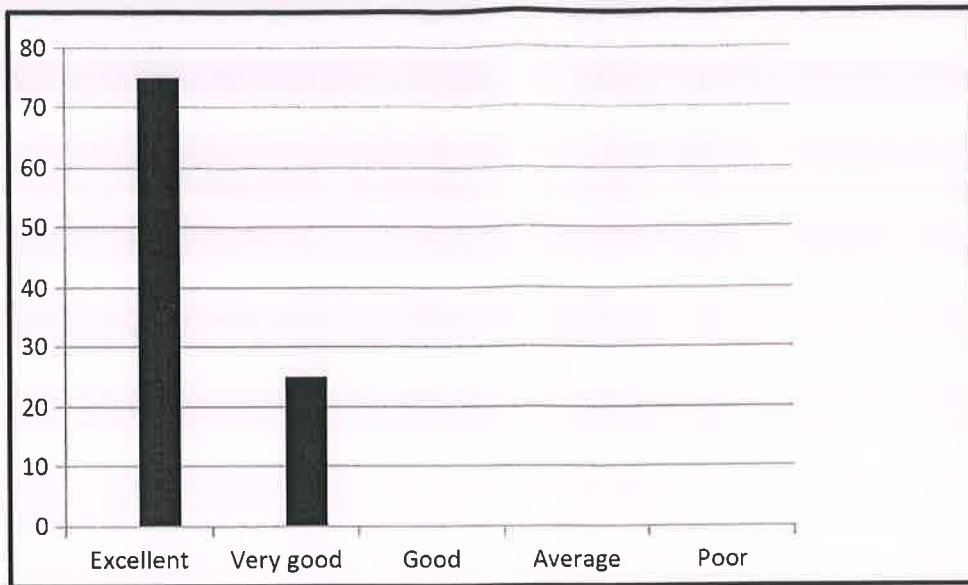
| Excellent | Very good | Good | Average | Poor |
|-----------|-----------|------|---------|------|
| 85 | 15 | 0 | 0 | 0 |



PRINCIPAL
RISE KRISHNA SAI PRAKASAM
GROUP OF INSTITUTIONS
VALLUR - ONGOLE.

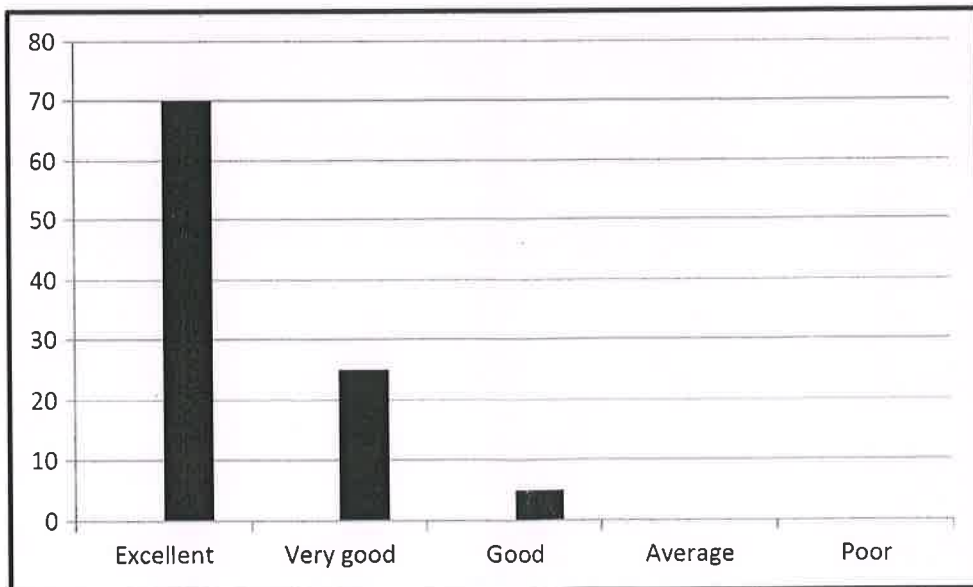
3. How do you rate the quality and relevance of the courses included in the curriculum?

| Excellent | Very good | Good | Average | Poor |
|-----------|-----------|------|---------|------|
| 75 | 25 | 0 | 0 | 0 |



4. How do you rate the treatment of the students irrespective of their background (gender, caste, community, creed, etc.) in teaching and evaluation?

| Excellent | Very good | Good | Average | Poor |
|-----------|-----------|------|---------|------|
| 70 | 25 | 5 | 0 | 0 |

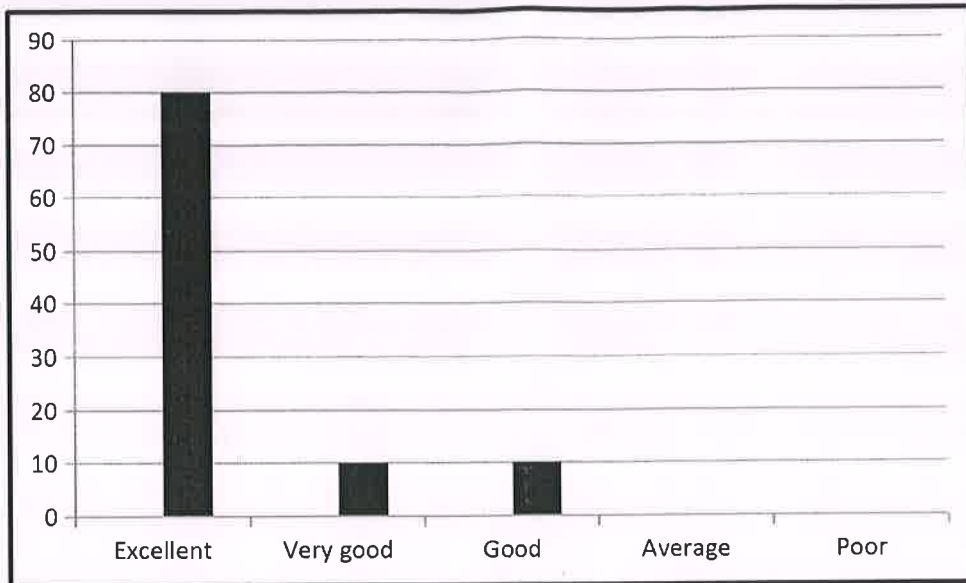


[Handwritten Signature]

PRINCIPAL
RISE KRISHNA SAI PRAKASAM
GROUP OF INSTITUTIONS
VALLUR - ONGOLE.

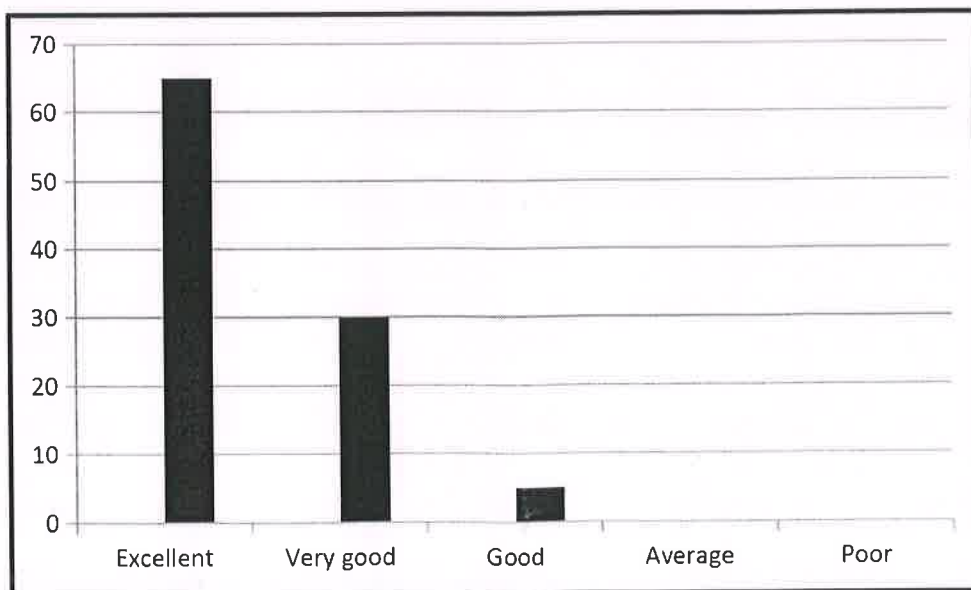
5. How do you rate the ambiance of the College for effective delivery of the academic process?

| Excellent | Very good | Good | Average | Poor |
|-----------|-----------|------|---------|------|
| 80 | 10 | 10 | 0 | 0 |



6. How do you rate the courses in terms of their relevance to the latest and/or the future technologies?

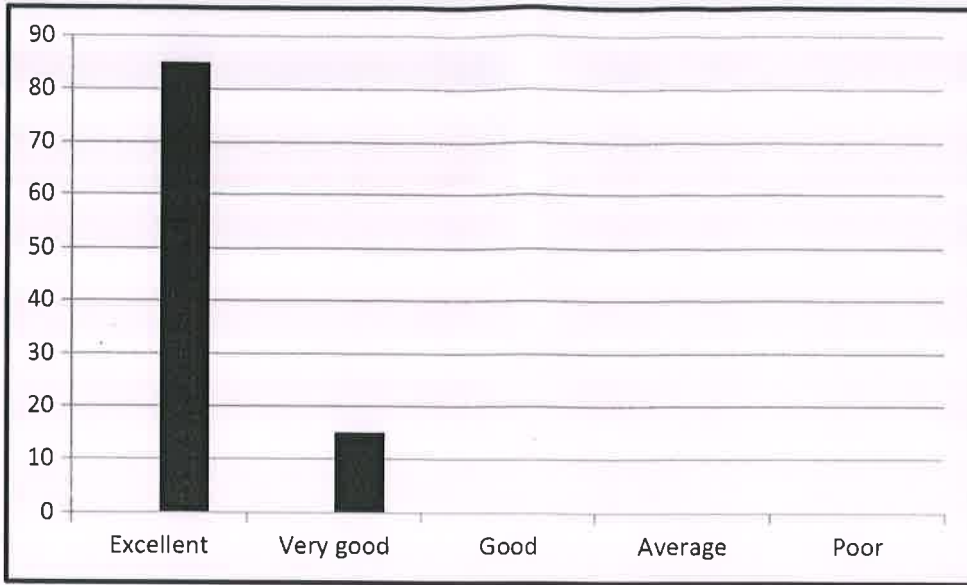
| Excellent | Very good | Good | Average | Poor |
|-----------|-----------|------|---------|------|
| 65 | 30 | 5 | 0 | 0 |



[Signature]
PRINCIPAL
RISE KRISHNA SAI PRAKASAM
GROUP OF INSTITUTIONS
VALLUR - ONGOLE.

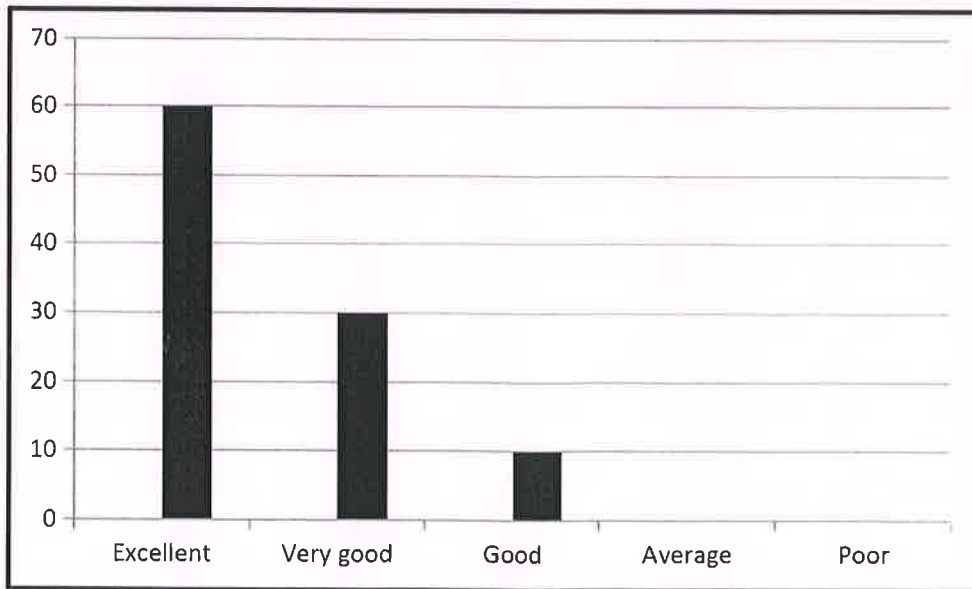
7. How do you rate the outcomes that your student has achieved from the courses?

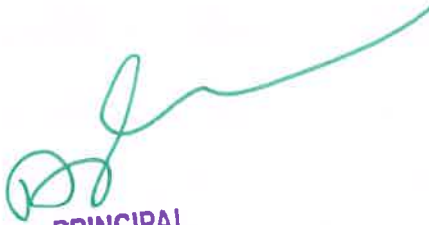
| Excellent | Very good | Good | Average | Poor |
|-----------|-----------|------|---------|------|
| 85 | 15 | 0 | 0 | 0 |



8. How do you rate the transparency of the evaluation system in the College?

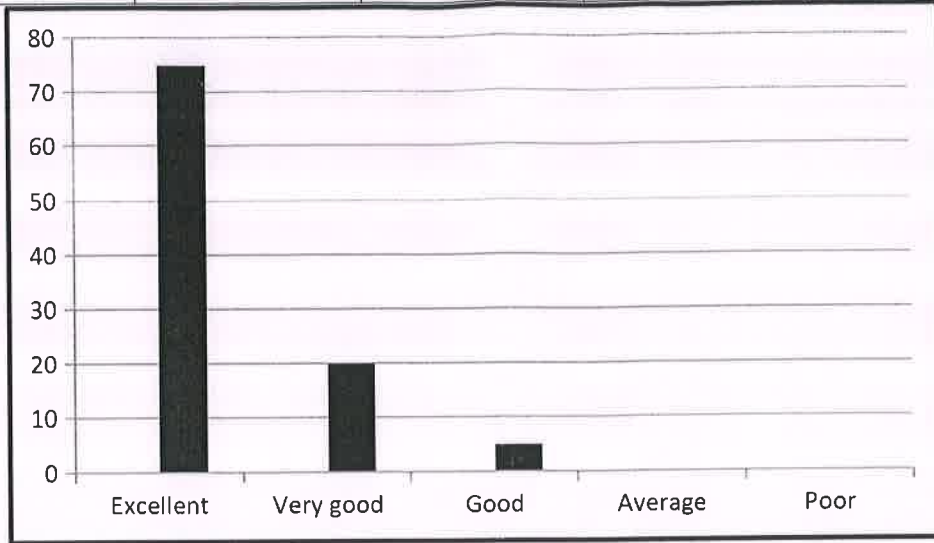
| Excellent | Very good | Good | Average | Poor |
|-----------|-----------|------|---------|------|
| 60 | 30 | 10 | 0 | 0 |




PRINCIPAL
RISE KRISHNA SAI PRAKASAM
GROUP OF INSTITUTIONS
VALLUR - ONGOLE.

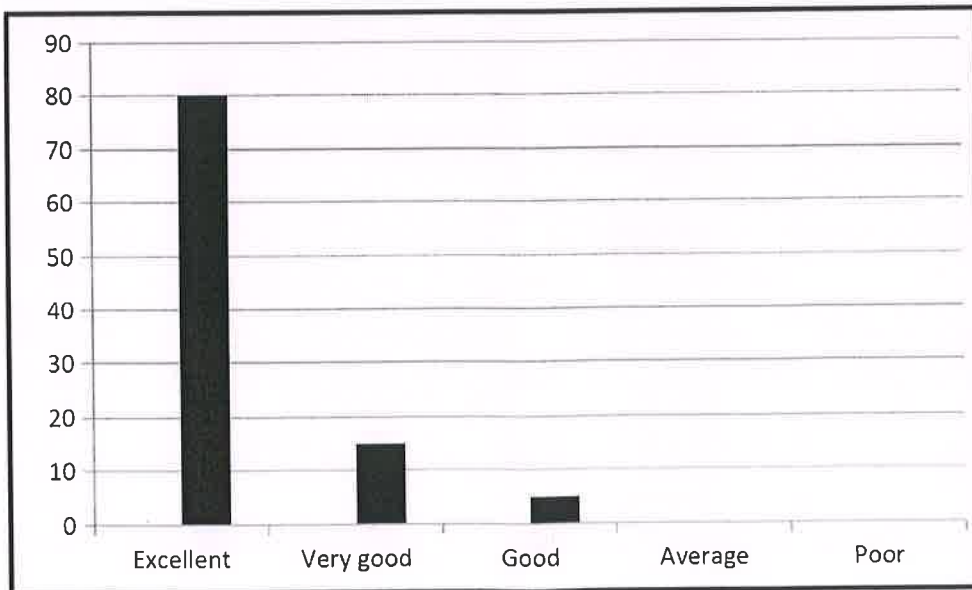
9. How do you rate the college activities that help your students in getting jobs on campus or off campus?

| Excellent | Very good | Good | Average | Poor |
|-----------|-----------|------|---------|------|
| 75 | 20 | 5 | 0 | 0 |




10. How do you rate the transformation of your students after the completion of course?

| Excellent | Very good | Good | Average | Poor |
|-----------|-----------|------|---------|------|
| 80 | 15 | 5 | 0 | 0 |




PRINCIPAL

RISE KRISHNA SAI PRAKASAM
GROUP OF INSTITUTIONS
VALLUR - ONGOLE.


Head of the Department
Mechanical Engineering
RISE Krishna Sai Prakasam
Group of Institutions.
Ongole-523 27?



RISE KRISHNA SAI PRAKASAM GROUP OF INSTITUTIONS::ONGOLE

(Approved by AICTE-NEW DELHI, Affiliated to JNTUK KAKINADA)


(An ISO 9001:2015 certified Institute)


DEPARTMENT OF MASTER OF COMPUTER APPLICATIONS INTERNAL QUALITY ASSURANCE CELL (IQAC)

ANALYSIS OF FACULTY FEEDBACK ON CURRICULUM

| Programme Name | Department Name | Academic Year | Semester |
|----------------|---------------------------------|---------------|----------|
| PG | MASTER OF COMPUTER APPLICATIONS | 2019-20 | II |

| S.No | Question | Excellent | Very Good | Good | Average | Poor |
|------|--|-----------|-----------|------|---------|------|
| 1 | How do you rate the programme offered in terms of the load of courses in different semesters? | 6 | 1 | 0 | 0 | 0 |
| 2 | How do you rate the availability of the text and reference books in the market? | 5 | 1 | 1 | 0 | 0 |
| 3 | How do you rate the quality and relevance of the courses included in the curriculum? | 7 | 0 | 0 | 0 | 0 |
| 4 | How do you rate the treatment of the students irrespective of their background (gender, caste, community, creed, etc.) in teaching and evaluation? | 7 | 0 | 0 | 0 | 0 |
| 5 | How do you rate the ambiance of the College for effective delivery of the academic process? | 6 | 1 | 0 | 0 | 0 |
| 6 | How do you rate the courses in terms of their relevance to the latest and/or the future technologies? | 6 | 1 | 0 | 0 | 0 |
| 7 | How do you rate the outcomes that your student has achieved from the courses? | 5 | 1 | 1 | 0 | 0 |
| 8 | How do you rate the transparency of the evaluation system in the College? | 6 | 1 | 0 | 0 | 0 |
| 9 | How do you rate the college activities that help your students in getting jobs on campus or off campus? | 6 | 1 | 0 | 0 | 0 |
| 10 | How do you rate the transformation of your students after the completion of course? | 6 | 1 | 0 | 0 | 0 |


PRINCIPAL
RISE KRISHNA SAI PRAKASAM
GROUP OF INSTITUTIONS
VALLURU - ONGOLE


HOD
HEAD OF THE DEPARTMENT
Department of M.C.A
RISE Krishna Sai Prakasam Group
of Institutions, VALLURU.A.P.-523 272



RISE KRISHNA SAI PRAKASAM GROUP OF INSTITUTIONS::ONGOLE

(Approved by AICTE-NEW DELHI, Affiliated to JNTUK KAKINADA)

(An ISO 9001:2015 certified Institute, NBA accredited for B.Tech. in CE, EEE, ME and ECE)

DEPARTMENT OF MASTER OF COMPUTER APPLICATIONS

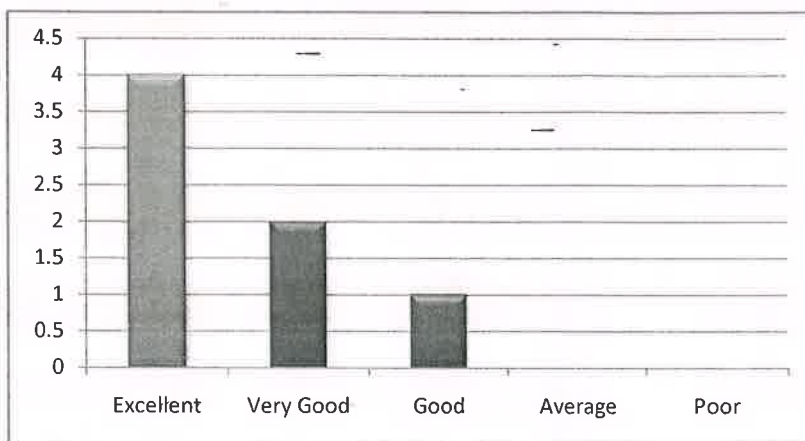
INTERNAL QUALITY ASSURANCE CELL (IQAC)

ANALYSIS OF FACULTY FEEDBACK ON CURRICULUM

| Programme Name | Department Name | Academic Year | Semester |
|----------------|-----------------|---------------|----------|
| PG | MCA | 2019-20 | II |

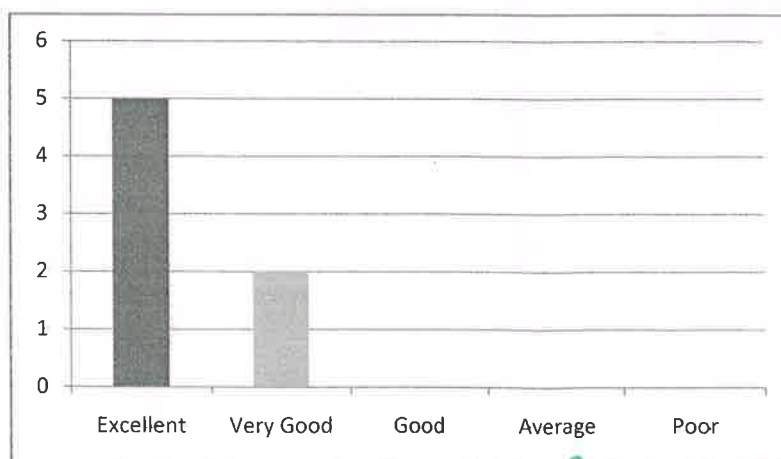
1. How do you rate the programme offered in terms of the load of courses in different semesters ?

| Excellent | Very Good | Good | Average | Poor |
|-----------|-----------|------|---------|------|
| 4 | 2 | 1 | 0 | 0 |



2. How do you rate the availability of the text and reference books in the market?

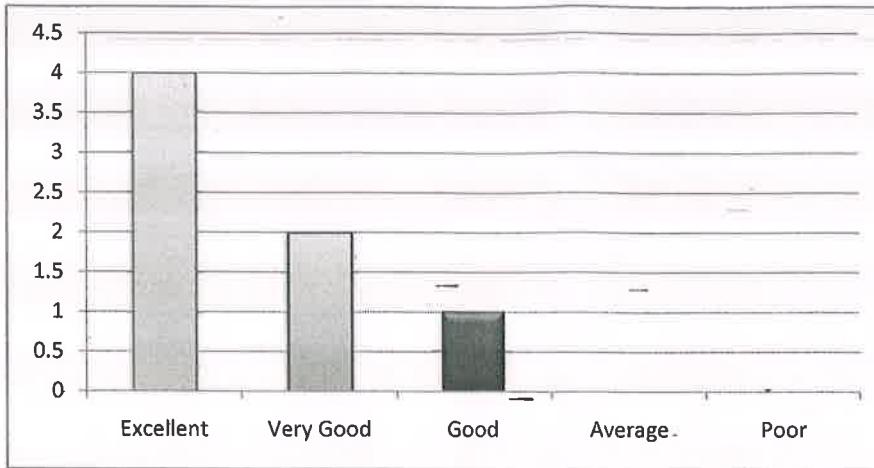
| Excellent | Very Good | Good | Average | Poor |
|-----------|-----------|------|---------|------|
| 5 | 2 | 0 | 0 | 0 |



PRINCIPAL
RISE KRISHNA SAI PRAKASAM
GROUP OF INSTITUTIONS
VALLUR - ONGOLE.

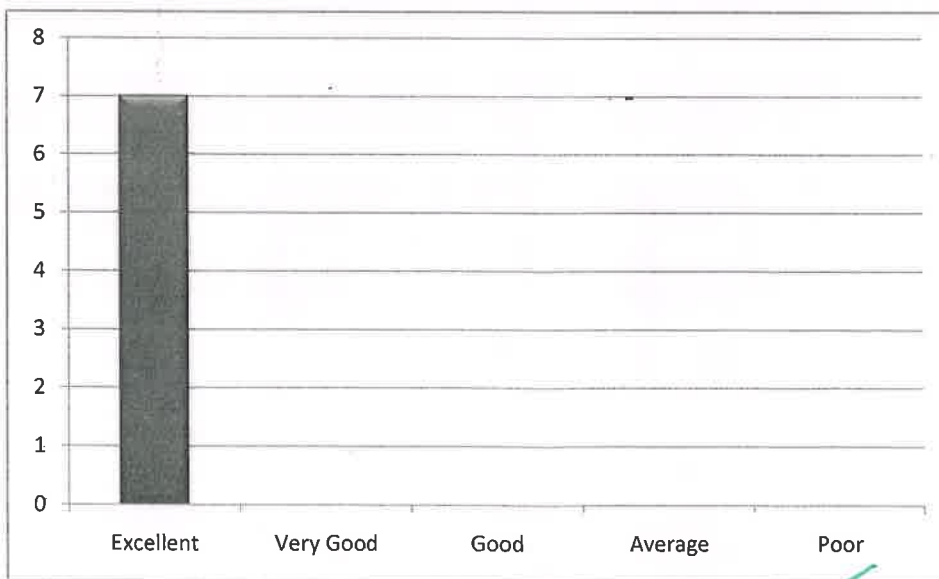
3. How do you rate the quality and relevance of the courses included in the curriculum?

| Excellent | Very Good | Good | Average | Poor |
|-----------|-----------|------|---------|------|
| 4 | 2 | 1 | 0 | 0 |



4. How do you rate the treatment of the students irrespective of their background (gender, cast, community, creed, ect.) in teaching and evaluation?

| Excellent | Very Good | Good | Average | Poor |
|-----------|-----------|------|---------|------|
| 7 | 0 | 0 | 0 | 0 |

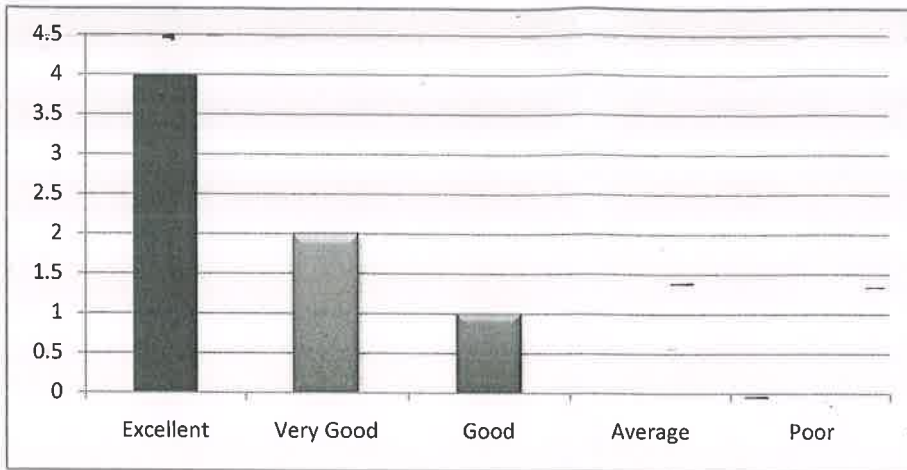


[Handwritten Signature]

PRINCIPAL
RISE KRISHNA SAI PRAKASH
GROUP OF INSTITUTIONS
VALLUR - ONGOLE.

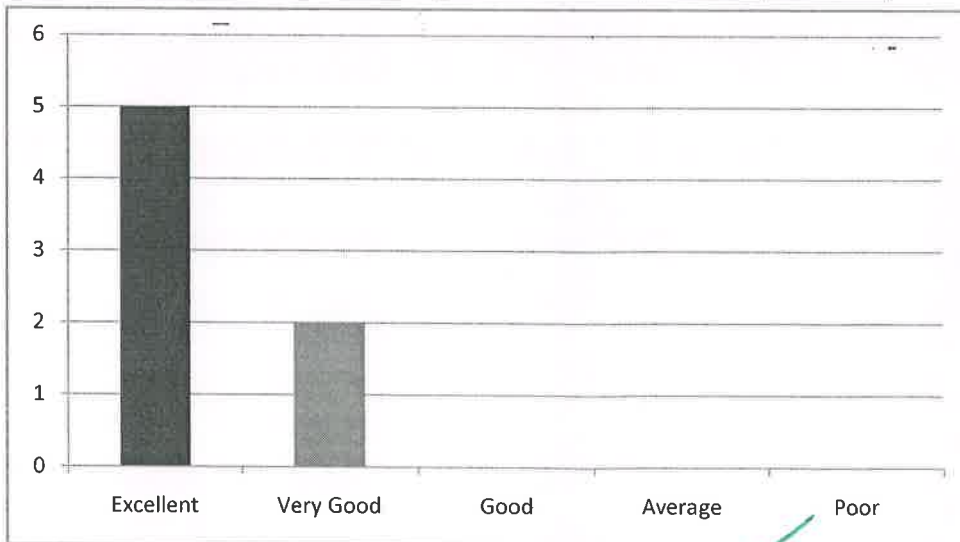
5. How do you rate the ambiance of the college for effective delivery of the academic process?

| Excellent | Very Good | Good | Average | Poor |
|-----------|-----------|------|---------|------|
| 4 | 2 | 1 | 0 | 0 |



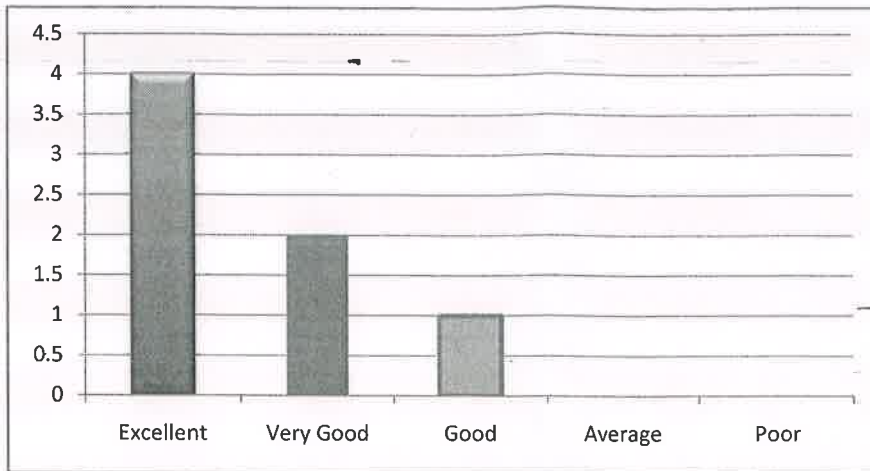
6. How do you rate the courses in terms of their relevance to the latest and/or the future technologies ?

| Excellent | Very Good | Good | Average | Poor |
|-----------|-----------|------|---------|------|
| 5 | 2 | 0 | 0 | 0 |



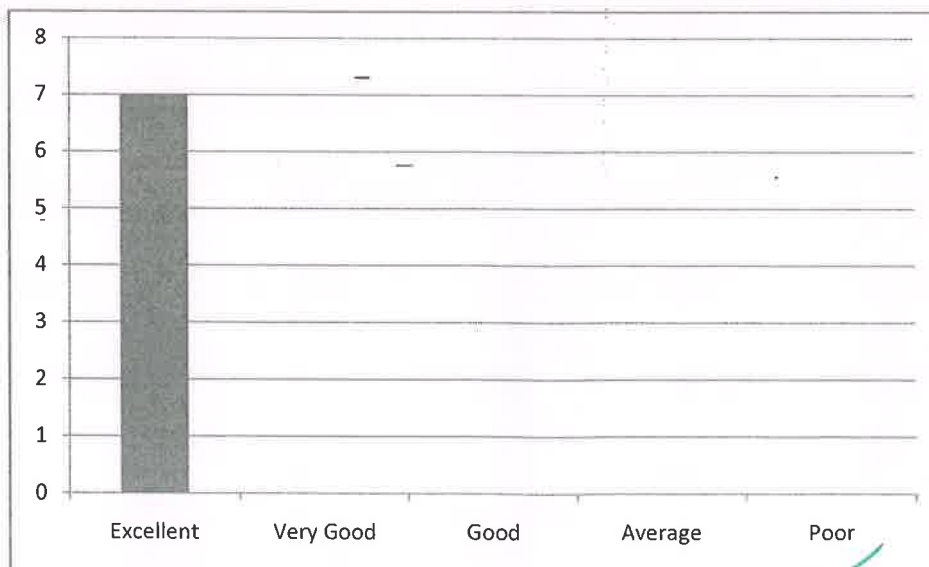
7. How do you rate the outcomes that your student has achieved from the courses ?


| Excellent | Very Good | Good | Average | Poor |
|-----------|-----------|------|---------|------|
| 4 | 2 | 1 | 0 | 0 |



8. How do you rate the transparency of the evaluation system in the college ?

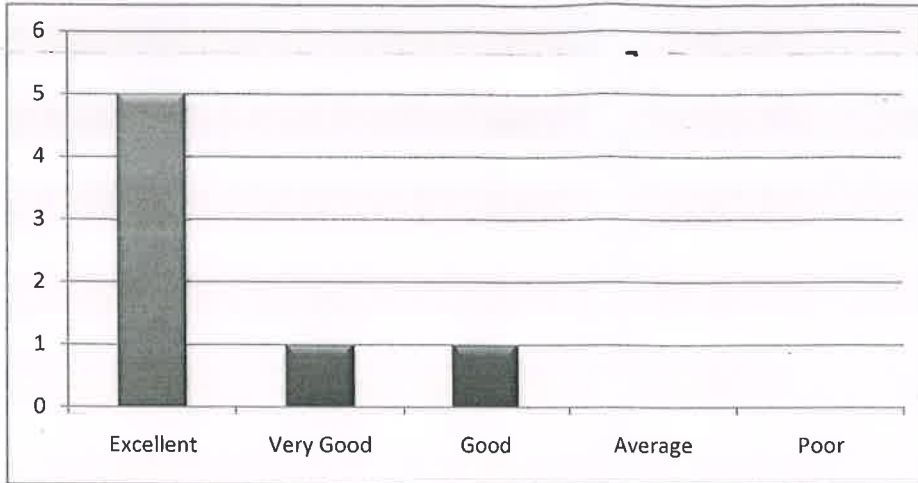
| Excellent | Very Good | Good | Average | Poor |
|-----------|-----------|------|---------|------|
| 7 | 0 | 0 | 0 | 0 |




 RESE KRISHNA SAI PRAKAS,
 GROUP OF INSTITUTIONS
 VALLUR - ONGOLE.

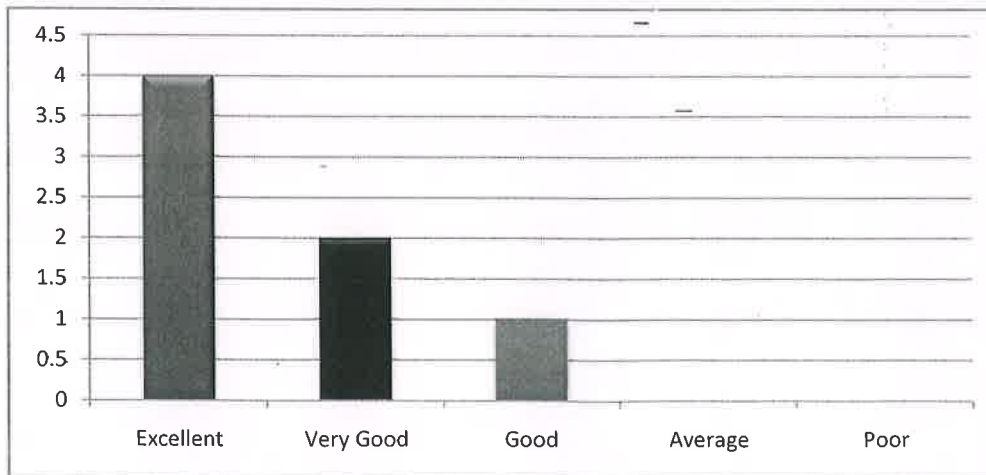
9. How do you rate the college activities that help your students in getting jobs on campus or off campus

| Excellent | Very Good | Good | Average | Poor |
|-----------|-----------|------|---------|------|
| 5 | 1 | 1 | 0 | 0 |



10. How do you rate the transformation of students after the completion of course ?

| Excellent | Very Good | Good | Average | Poor |
|-----------|-----------|------|---------|------|
| 4 | 2 | 1 | 0 | 0 |



[Handwritten Signature]
 PRINCIPAL

**RISE KRISHNA SAI PRAKASAM
 GROUP OF INSTITUTIONS
 VALLUR - ONGOLE.**

[Handwritten Signature]
 HOD
 HEAD OF THE DEPARTMENT
 Department of M.C.A.
 RISE Krishna Sai Prakasam Group
 of Institutions, VALLURU, A.P.-523 272