



**RISE KRISHNA SAI PRAKASAM GROUP OF INSTITUTIONS::ONGOLE**

(Approved by AICTE-NEW DELHI, Affiliated to JNTUK KAKINADA)

(An ISO 9001:2015 certified Institute)

NH-16, Valluru-523272, Ongole, Prakasam (District), A.P

**INTERNAL QUALITY ASSURANCE CELL (IQAC)**

**ANALYSIS OF STUDENT FEEDBACK ON CURRICULUM**

<b>Programme Name: UG (B. Tech )</b>	<b>Academic Year: 2018-19</b>
<b>Department Name: Computer Science &amp; Engineering</b>	<b>Year/Semester: II- I</b>

S.No	Question	Excellent	Very Good	Good	Average	Poor
1	Rate how challenging was the syllabus offered by the courses.	74	28	6	1	0
2	Rate the appropriate sequence of the courses provided in the curriculum.	69	28	20	10	0
3	Rate the depth of the syllabus of courses concerning the competencies expected by industry/current global scenarios.	62	29	14	3	1
4	Rate the sequence of the units/modules in courses.	65	30	11	2	1
5	Rate the adequateness of the prescribed text books and reference books mentioned for the courses.	68	28	10	3	0
6	Rate the syllabus content of the courses in terms of the burden on students.	70	22	16	1	0
7	Rate the design of courses in terms of extra learning or self-learning.	63	25	13	7	1
8	Rate the flexibility in choosing the elective courses concerning technology advancements.	67	29	10	3	0
9	Rate the percentage of courses offering LAB components.	71	20	15	3	0
10	Rate the composition of courses in terms of Basic Sciences, Engineering science, Humanities, Discipline core, discipline elective, open elective, project, etc.?	61	22	17	7	2

**PRINCIPAL**  
**RISE KRISHNA SAI PRAKASAM**  
**GROUP OF INSTITUTIONS**  
**VALLUR - ONGOLE**

**HOD**  
**HEAD OF THE DEPARTMENT**  
**Dept. of Computer Science & Engin...**  
**RISE Krishna Sai Prakasam Group of I...**  
**Valluru (V)**



# RISE KRISHNA SAI PRAKASAM GROUP OF INSTITUTIONS:: ONGOLE

Approved by AICTE-NEW DELHI, Affiliated to JNTUK KAKINADA)

(An ISO 9001:2015 certified Institute)

NH-16, Valluru-523272, Ongole, Prakasam (District), A. P

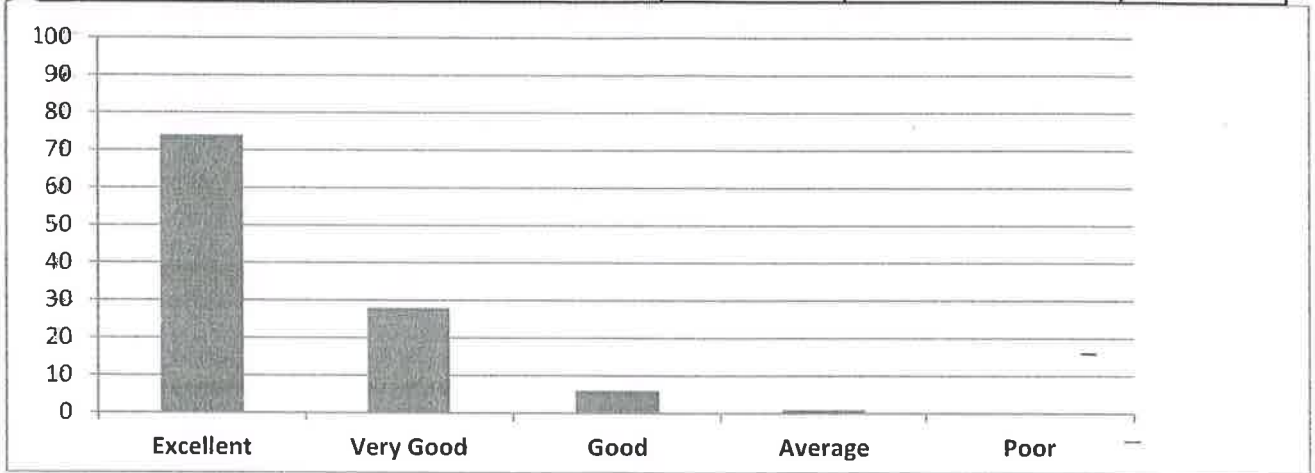
## STUDENT FEEDBACK ANALYSIS

### DEPARTMENT OF COMPUTER SCIENCE AND ENGINEERING

#### ACADEMIC YEAR 2018-19 II- B. TECH, I-SEMESTER

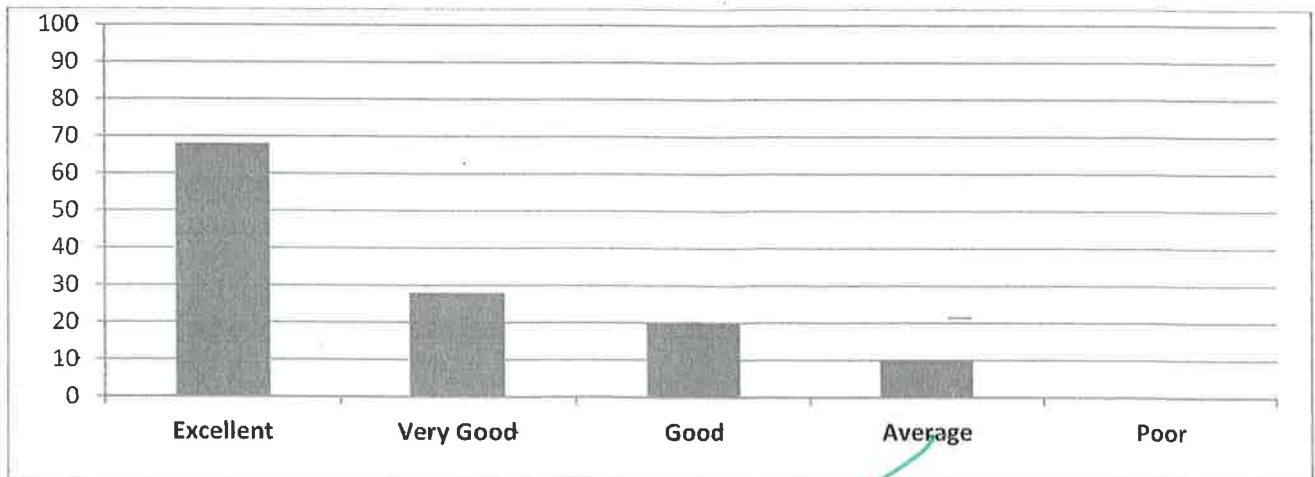
1. Rate how challenging was the syllabus offered by the courses.

Excellent	Very Good	Good	Average	Poor
74	28	6	1	0



2. Rate the appropriate sequence of the courses provided in the curriculum.

Excellent	Very Good	Good	Average	Poor
68	28	20	10	0



  
PRINCIPAL  
RISE KRISHNA SAI PRAKASAM  
GROUP OF INSTITUTIONS  
VALLUR - ONGOLE



## RISE KRISHNA SAI PRAKASAM GROUP OF INSTITUTIONS:: ONGOLE

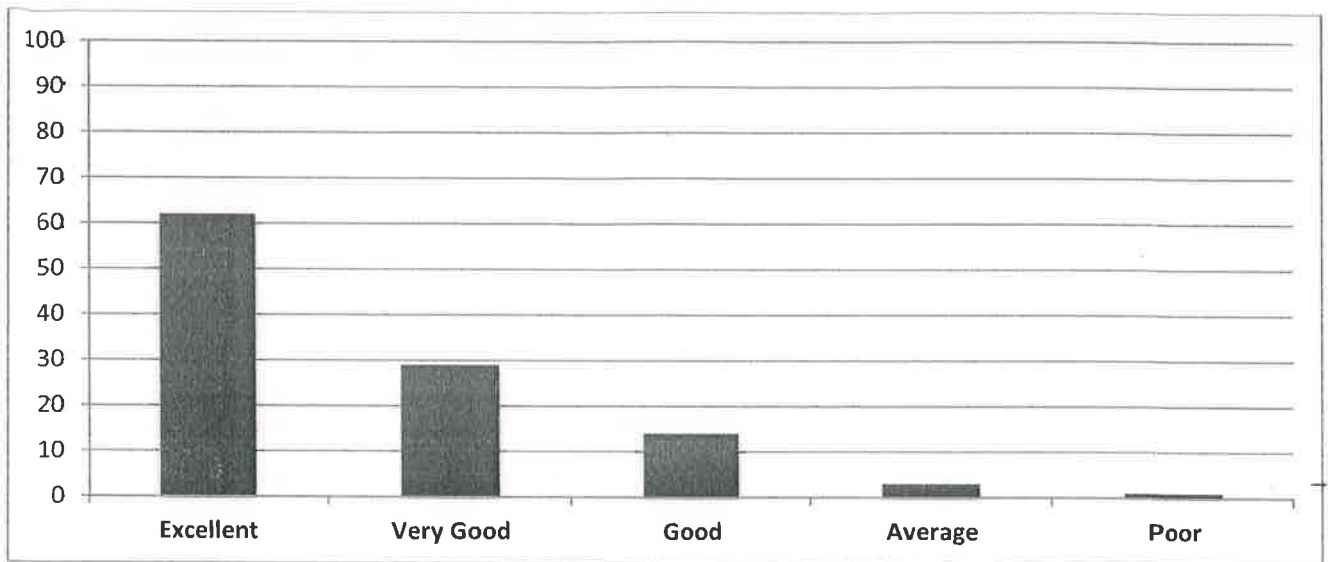
Approved by AICTE-NEW DELHI, Affiliated to JNTUK KAKINADA)

(An ISO 9001:2015 certified Institute)

NH-16, Valluru-523272, Ongole, Prakasam (District), A. P

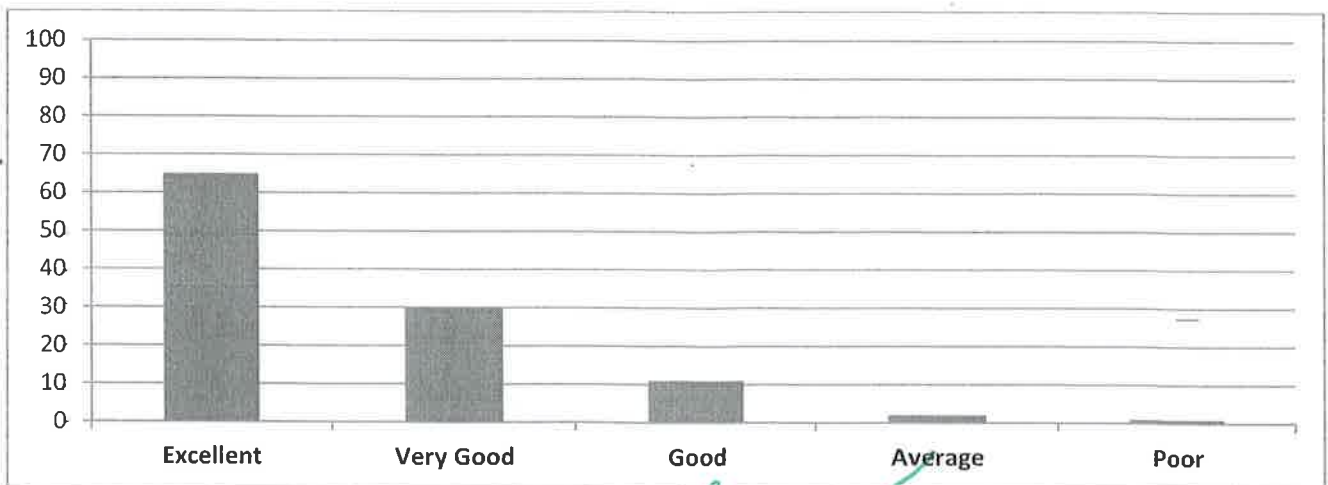
### 3. Rate the depth of the syllabus of courses concerning the competencies expected by industry/current global scenarios.

Excellent	Very Good	Good	Average	Poor
62	29	14	3	1



### 4. Rate the sequence of the units/modules in courses.

Excellent	Very Good	Good	Average	Poor
65	30	11	2	1



  
PRINCIPAL  
RISE KRISHNA SAI PRAKASAM  
GROUP OF INSTITUTIONS  
VALLUR - ONGOLE



## RISE KRISHNA SAI PRAKASAM GROUP OF INSTITUTIONS:: ONGOLE

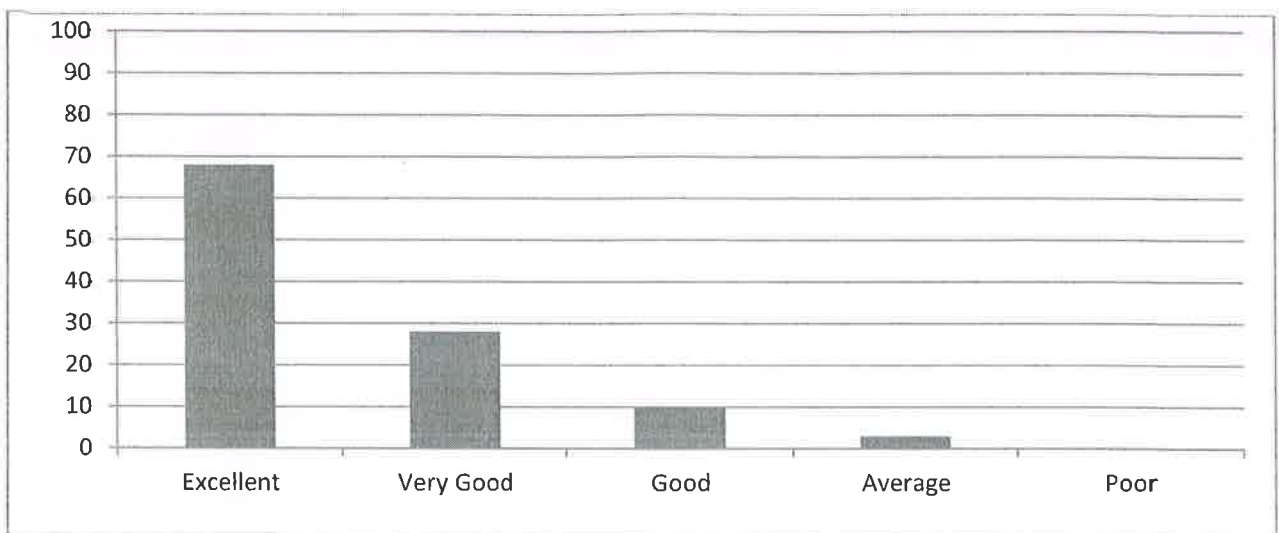
Approved by AICTE-NEW DELHI, Affiliated to JNTUK KAKINADA)

(An ISO 9001:2015 certified Institute)

NH-16, Valluru-523272, Ongole, Prakasam (District), A. P

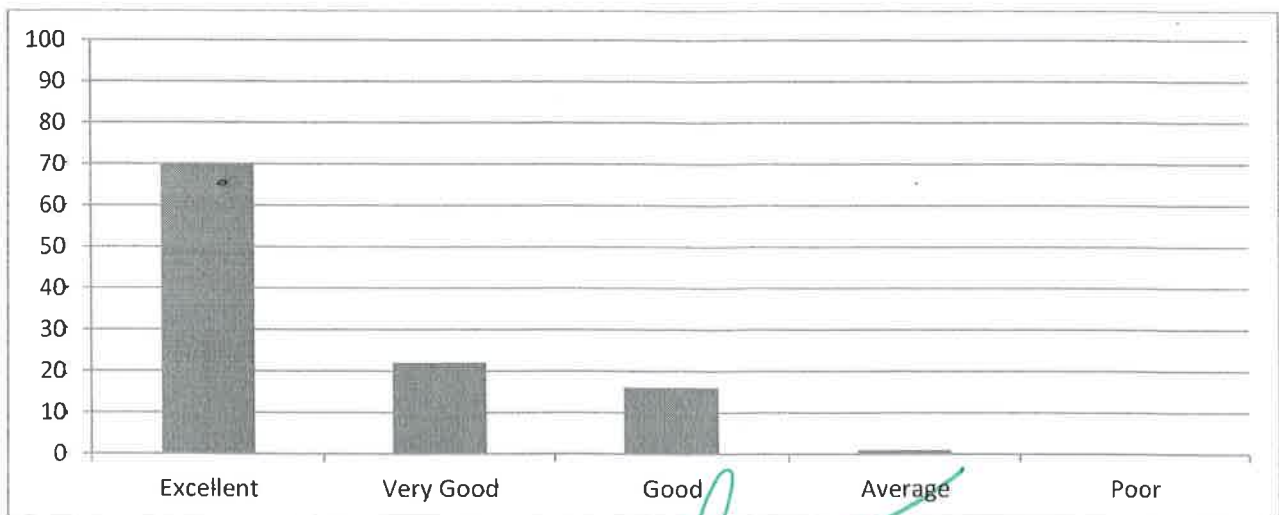
### 5. Rate the adequateness of the prescribed text books and reference books mentioned for the courses.

Excellent	Very Good	Good	Average	Poor
68	28	10	3	0



### 6. Rate the syllabus content of the courses in terms of the burden on students.

Excellent	Very Good	Good	Average	Poor
70	22	16	1	0



  
PRINCIPAL  
RISE KRISHNA SAI PRAKASAM  
GROUP OF INSTITUTIONS  
VALLUR - ONGOLE



## RISE KRISHNA SAI PRAKASAM GROUP OF INSTITUTIONS:: ONGOLE

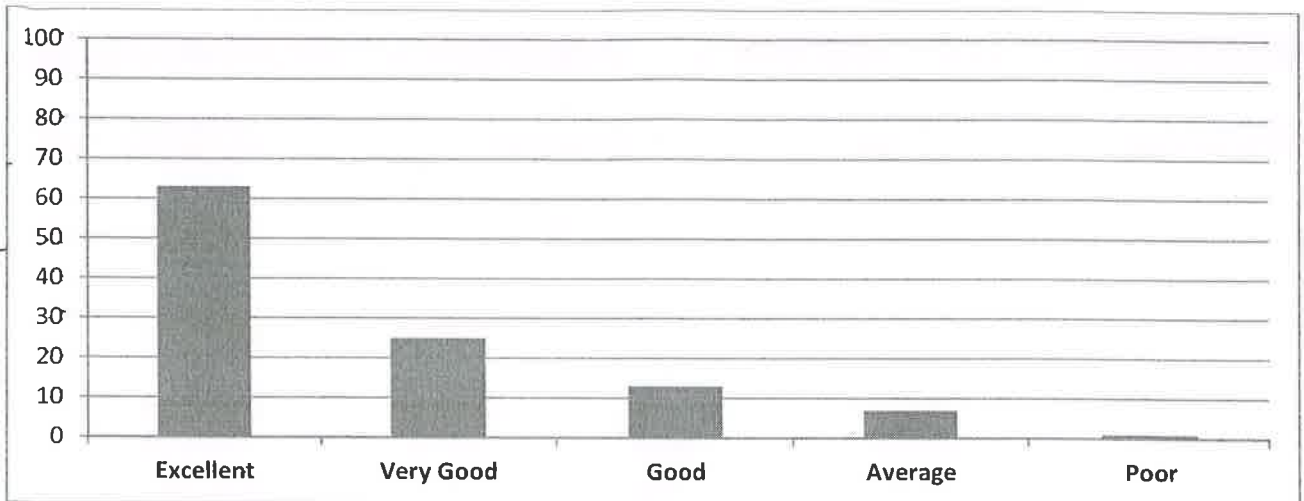
Approved by AICTE-NEW DELHI, Affiliated to JNTUK KAKINADA)

(An ISO 9001:2015 certified Institute)

NH-16, Valluru-523272, Ongole, Prakasam (District), A. P

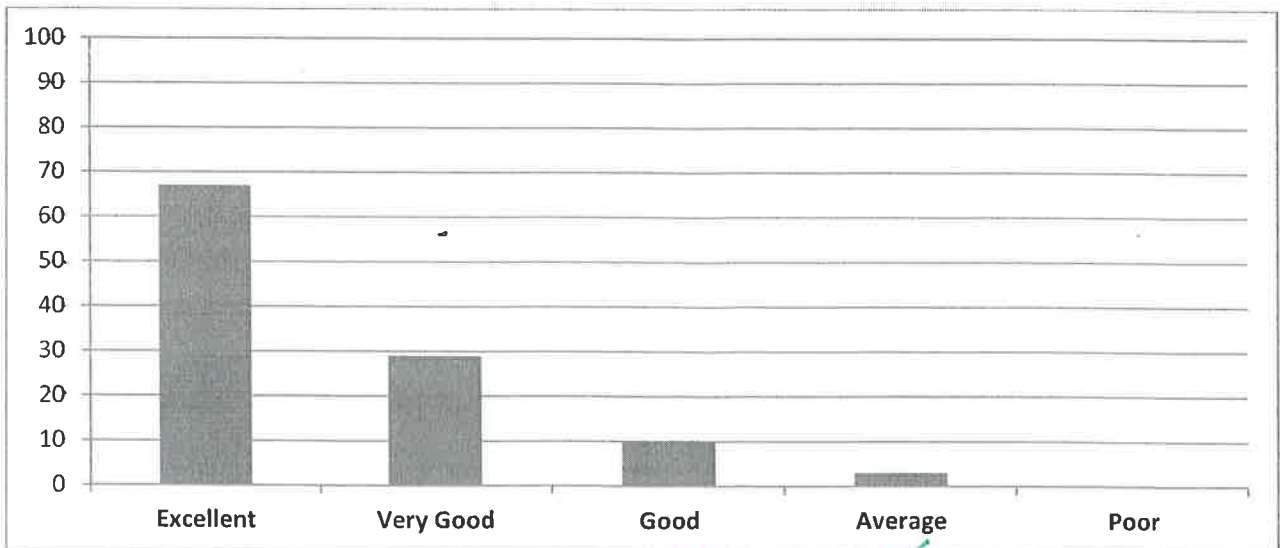
### 7. Rate the design of courses in terms of extra learning or self-learning.


Excellent	Very Good	Good	Average	Poor
63	25	13	7	1



### 8. Rate the flexibility in choosing the elective courses concerning technology advancements.

Excellent	Very Good	Good	Average	Poor
67	29	10	3	0



  
PRINCIPAL  
RISE KRISHNA SAI PRAKASAM  
GROUP OF INSTITUTIONS  
VALLUR - ONGOLE





## RISE KRISHNA SAI PRAKASAM GROUP OF INSTITUTIONS:: ONGOLE

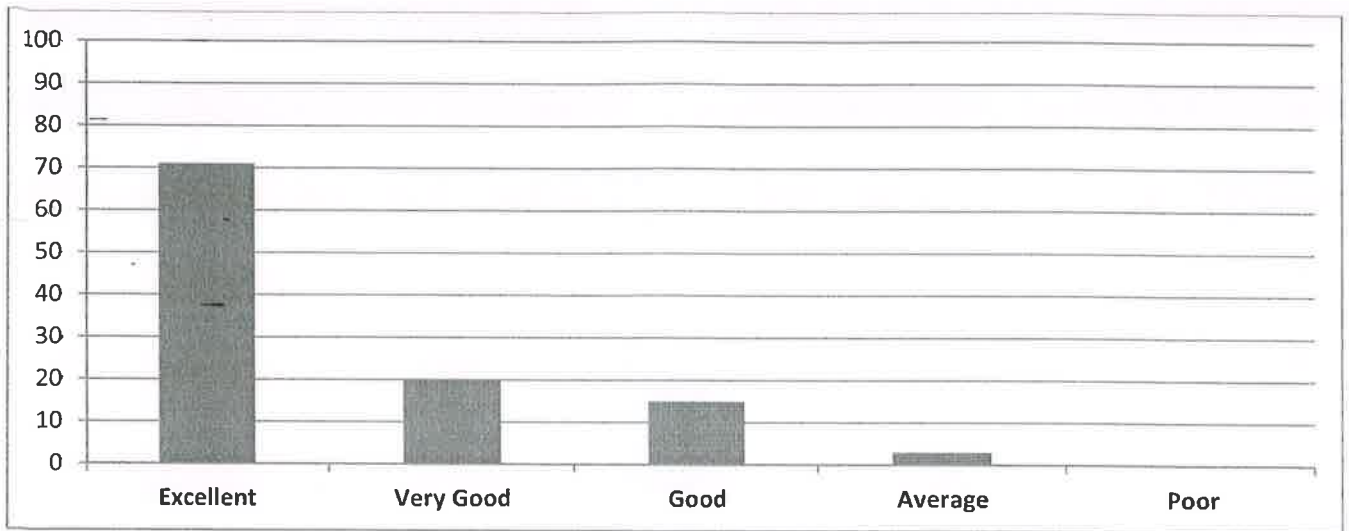
Approved by AICTE-NEW DELHI, Affiliated to JNTUK KAKINADA)

(An ISO 9001:2015 certified Institute)

NH-16, Valluru-523272, Ongole, Prakasam (District), A. P

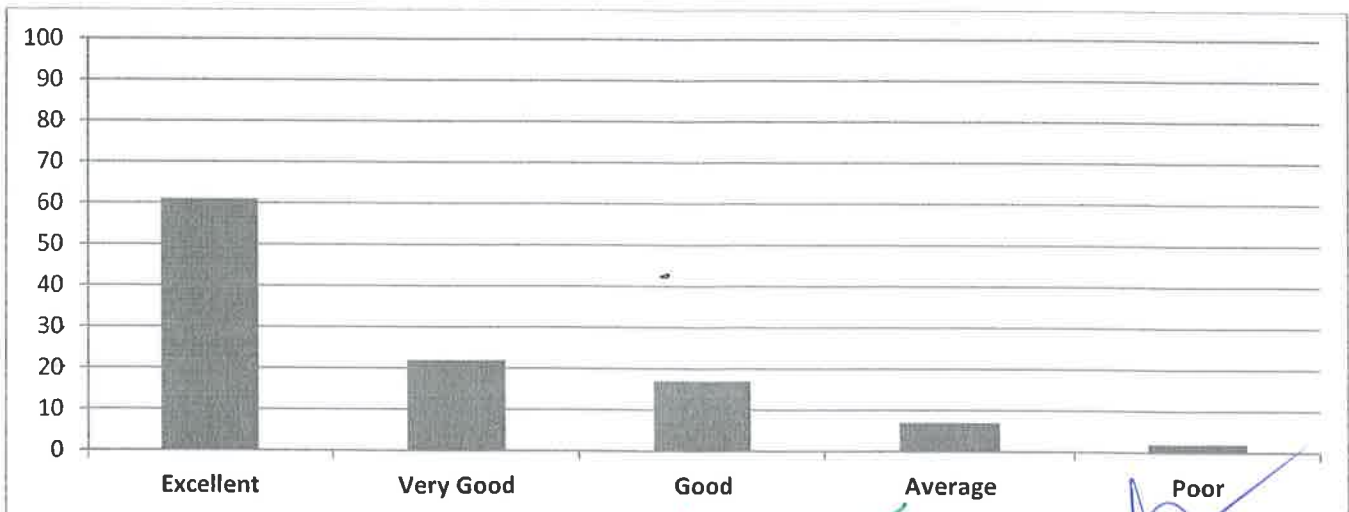
### 9. Rate the percentage of courses offering LAB components.

Excellent	Very Good	Good	Average	Poor
71	20	15	3	0



### 10. Rate the composition of courses in terms of Basic Sciences, Engineering science, Humanities, Discipline core, discipline elective, open elective, project, etc.?

Excellent	Very Good	Good	Average	Poor
61	22	17	7	2



PRINCIPAL  
RISE KRISHNA SAI PRAKASAM  
GROUP OF INSTITUTIONS  
VALLUR - ONGOLE

HEAD OF THE DEPARTMENT  
Dept. of Computer Science & Engin...  
RISE Krishna Sai Prakasam Group of Insti...  
Valluru (V), Ongole.



# RISE KRISHNA SAI PRAKASAM GROUP OF INSTITUTIONS::ONGOLE

(Approved by AICTE-NEW DELHI, Affiliated to JNTUK KAKINADA)

(An ISO 9001:2015 certified Institute)

NH-16, Valluru-523272, Ongole, Prakasam (District), A.P


## INTERNAL QUALITY ASSURANCE CELL (IQAC)

### ANALYSIS OF STUDENT FEEDBACK ON CURRICULUM

<b>Programme Name: UG (B. Tech)</b>	<b>Academic Year: 2018-19</b>
<b>Department Name: Computer Science &amp; Engineering</b>	<b>Year/Semester: III- I</b>

S.No	Question	Excellent	Very Good	Good	Average	Poor
1	Rate how challenging was the syllabus offered by the courses.	65	24	17	8	0
2	Rate the appropriate sequence of the courses provided in the curriculum.	58	26	16	13	1
3	Rate the depth of the syllabus of courses concerning the competencies expected by industry/current global scenarios.	59	23	18	13	1
4	Rate the sequence of the units/modules in courses.	56	28	19	11	0
5	Rate the adequateness of the prescribed text books and reference books mentioned for the courses.	58	20	19	16	1
6	Rate the syllabus content of the courses in terms of the burden on students.	63	22	19	10	0
7	Rate the design of courses in terms of extra learning or self-learning.	60	24	17	11	2
8	Rate the flexibility in choosing the elective courses concerning technology advancements.	64	22	17	10	1
9	Rate the percentage of courses offering LAB components.	57	22	20	14	1
10	Rate the composition of courses in terms of Basic Sciences, Engineering science, Humanities, Discipline core, discipline elective, open elective, project, etc.?	58	21	20	14	1

  
PRINCIPAL  
RISE KRISHNA SAI PRAKASAM  
GROUP OF INSTITUTIONS  
VALLUR - ONGOLE

  
HOD  
HEAD OF THE DEPARTMENT  
Dept. of Computer Science & Engineering  
RISE Krishna Sai Prakasam Group of Institutions  
Valluru (V), Ongole.



**RISE KRISHNA SAI PRAKASAM GROUP OF INSTITUTIONS::ONGOLE**

(Approved by AICTE-NEW DELHI, Affiliated to JNTUK KAKINADA)

(An ISO 9001:2015 certified Institute)

NH-16, Valluru-523272, Ongole, Prakasam (District), A. P

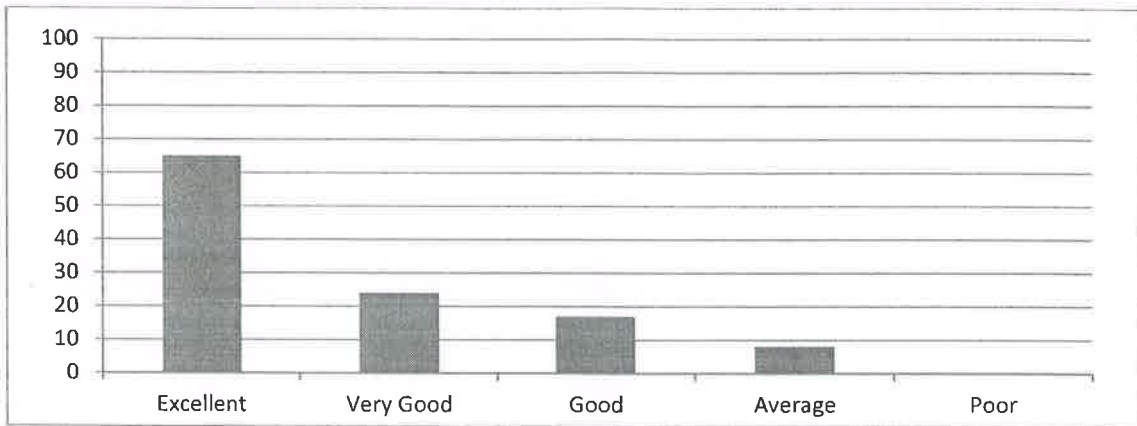
**STUDENT FEEDBACK ANALYSIS**

**DEPARTMENT OF COMPUTER SCIENCE AND ENGINEERING**

**ACADEMIC YEAR 2018-19 III-B.TECH I-SEMESTER**

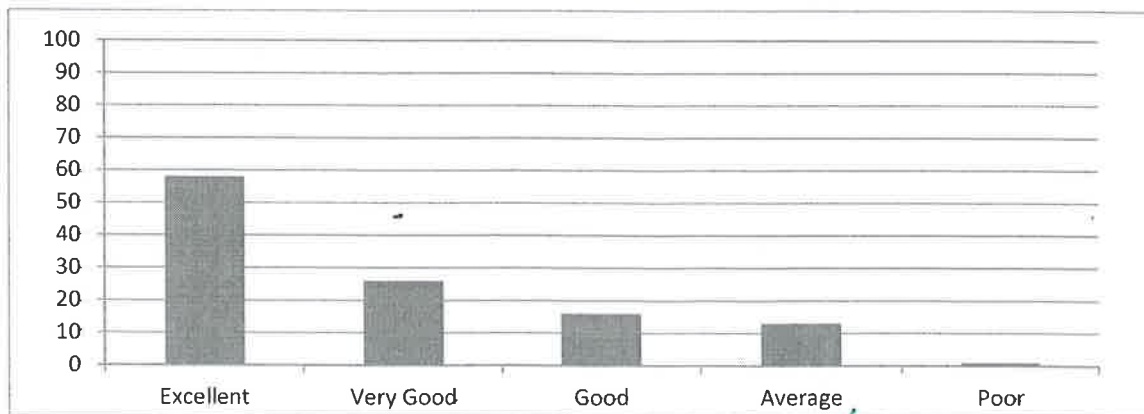
**1. Rate how challenging was the syllabus offered by the courses.**

Excellent	Very Good	Good	Average	Poor
65	24	17	8	0



**2. Rate the appropriate sequence of the courses provided in the curriculum.**

Excellent	Very Good	Good	Average	Poor
58	26	16	13	1



  
PRINCIPAL  
RISE KRISHNA SAI PRAKASAM  
GROUP OF INSTITUTIONS  
VALLUR - ONGOLE





### RISE KRISHNA SAI PRAKASAM GROUP OF INSTITUTIONS::ONGOLE

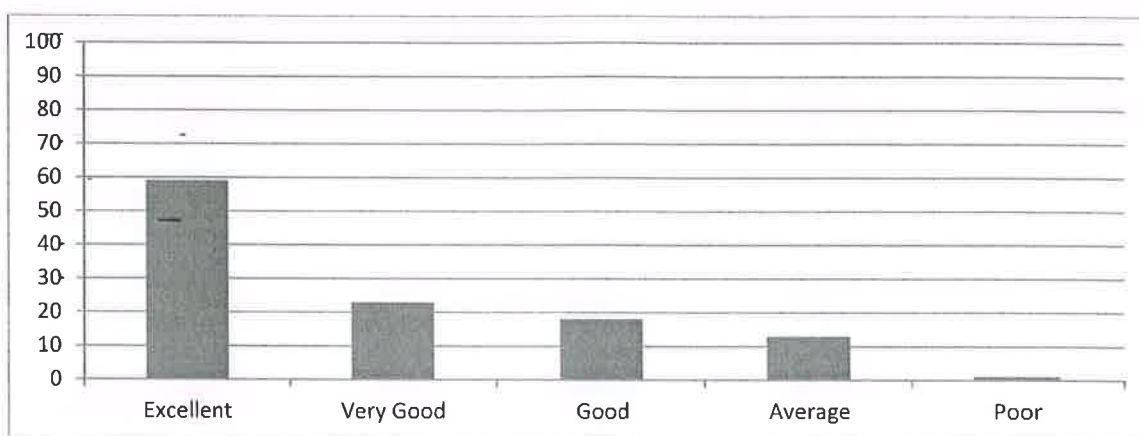
(Approved by AICTE-NEW DELHI, Affiliated to JNTUK KAKINADA)

(An ISO 9001:2015 certified Institute)

NH-16, Valluru-523272, Ongole, Prakasam (District), A. P

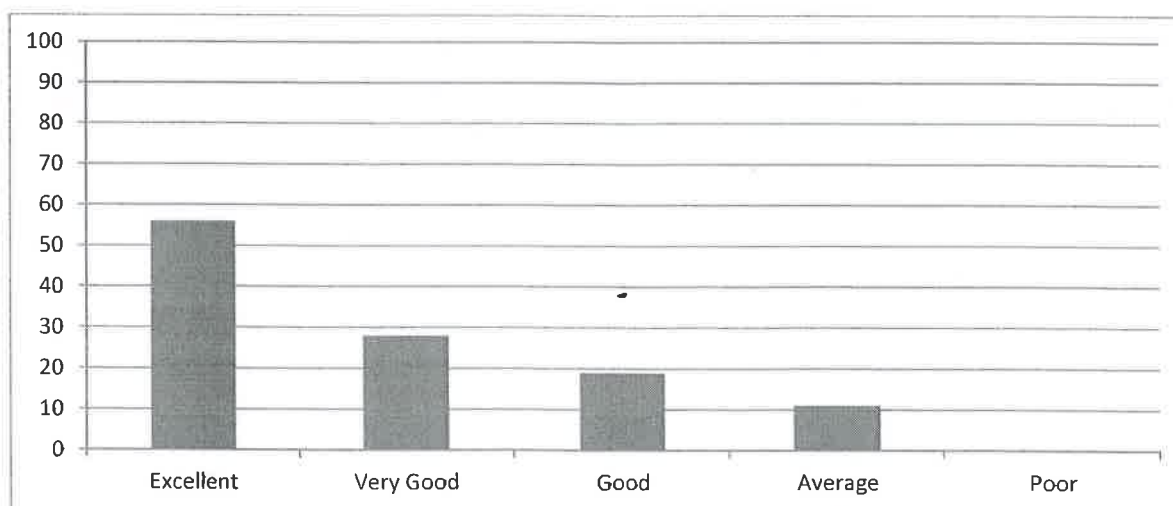
#### 3. Rate the depth of the syllabus of courses concerning the competencies expected by industry/current global scenarios.

Excellent	Very Good	Good	Average	Poor
59	23	18	13	1



#### 4. Rate the sequence of the units/modules in courses.

Excellent	Very Good	Good	Average	Poor
56	28	19	11	0



  
PRINCIPAL  
RISE KRISHNA SAI PRAKASAM  
GROUP OF INSTITUTIONS  
VALLUR - ONGOLE



## RISE KRISHNA SAI PRAKASAM GROUP OF INSTITUTIONS::ONGOLE

(Approved by AICTE-NEW DELHI, Affiliated to JNTUK KAKINADA)

(An ISO 9001:2015 certified Institute)

NH-16, Valluru-523272, Ongole, Prakasam (District), A. P

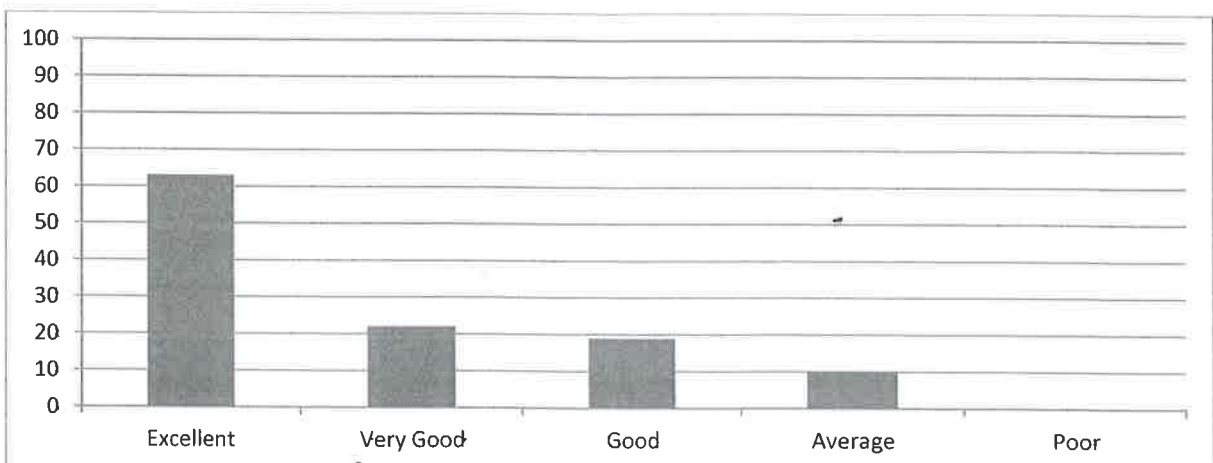
### 5. Rate the adequateness of the prescribed text books and reference books mentioned for the courses.


Excellent	Very Good	Good	Average	Poor
58	20	19	16	1



### 6. Rate the syllabus content of the courses in terms of the burden on students.

Excellent	Very Good	Good	Average	Poor
63	22	19	10	0



  
PRINCIPAL  
RISE KRISHNA SAI PRAKASAM  
GROUP OF INSTITUTIONS  
VALLUR - ONGOLE



## RISE KRISHNA SAI PRAKASAM GROUP OF INSTITUTIONS::ONGOLE

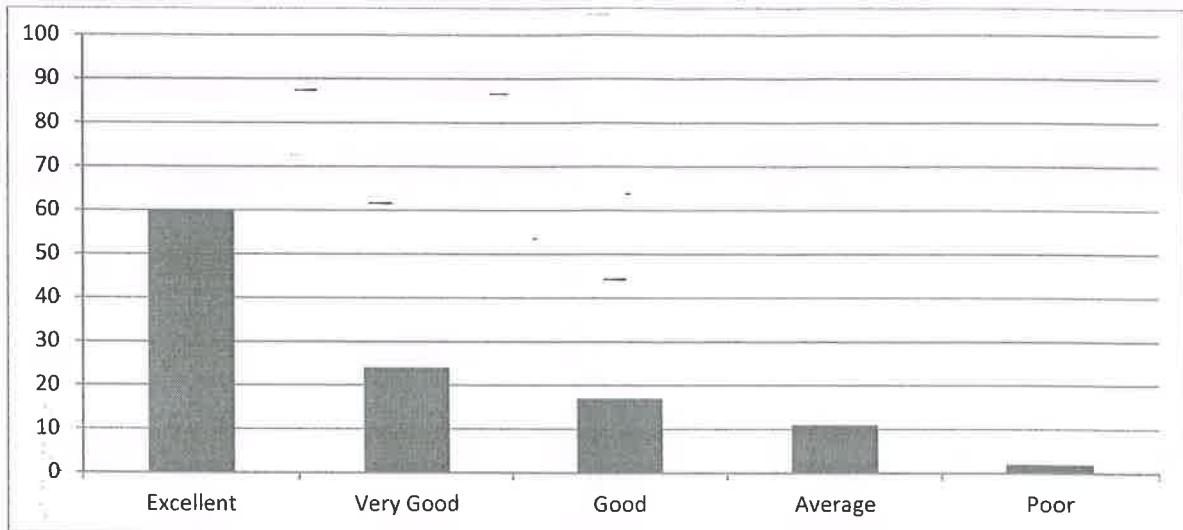
(Approved by AICTE-NEW DELHI, Affiliated to JNTUK KAKINADA)

(An ISO 9001:2015 certified Institute)

NH-16, Valluru-523272, Ongole, Prakasam (District), A. P

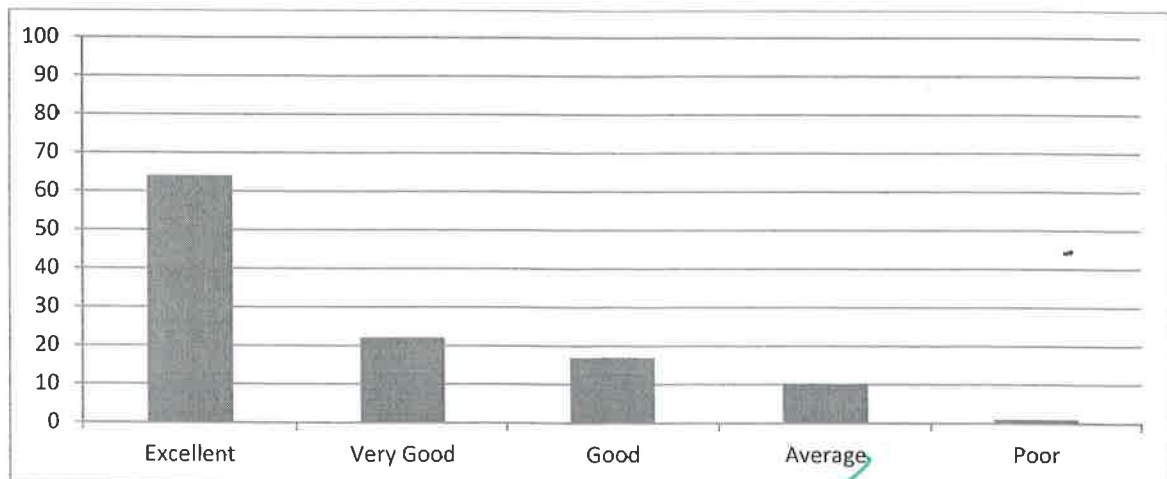
### 7. Rate the design of courses in terms of extra learning or self-learning.

Excellent	Very Good	Good	Average	Poor
60	24	17	11	2



### 8. Rate the flexibility in choosing the elective courses concerning technology advancements.

Excellent	Very Good	Good	Average	Poor
64	22	17	10	1



  
PRINCIPAL  
RISE KRISHNA SAI PRAKASAM  
GROUP OF INSTITUTIONS  
VALLUR - ONGOLE



**RISE KRISHNA SAI PRAKASAM GROUP OF INSTITUTIONS::ONGOLE**

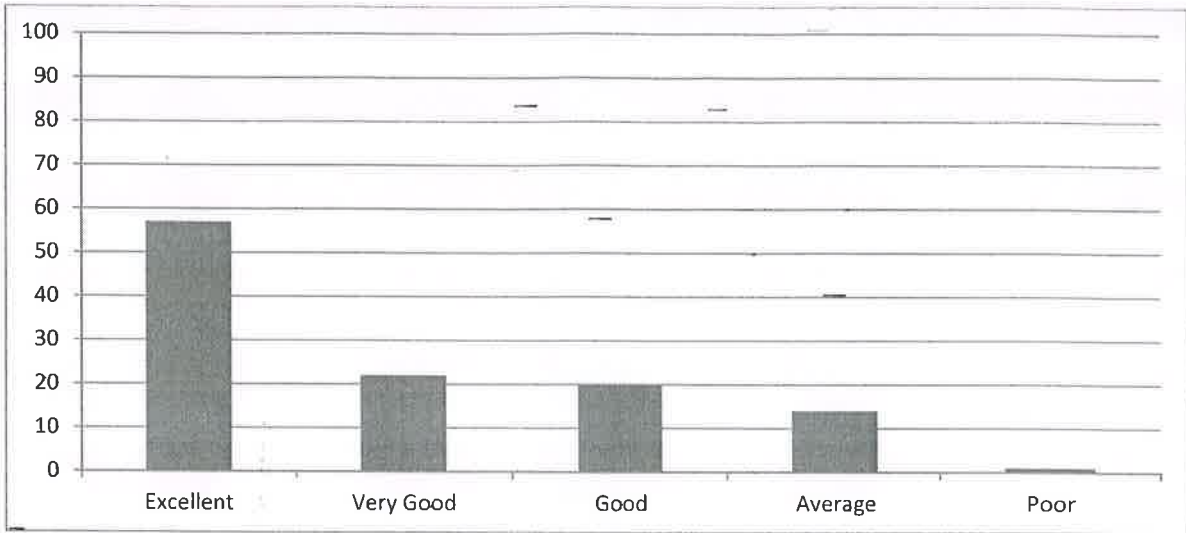
(Approved by AICTE-NEW DELHI, Affiliated to JNTUK KAKINADA)

(An ISO 9001:2015 certified Institute)

NH-16, Valluru-523272, Ongole, Prakasam (District), A. P

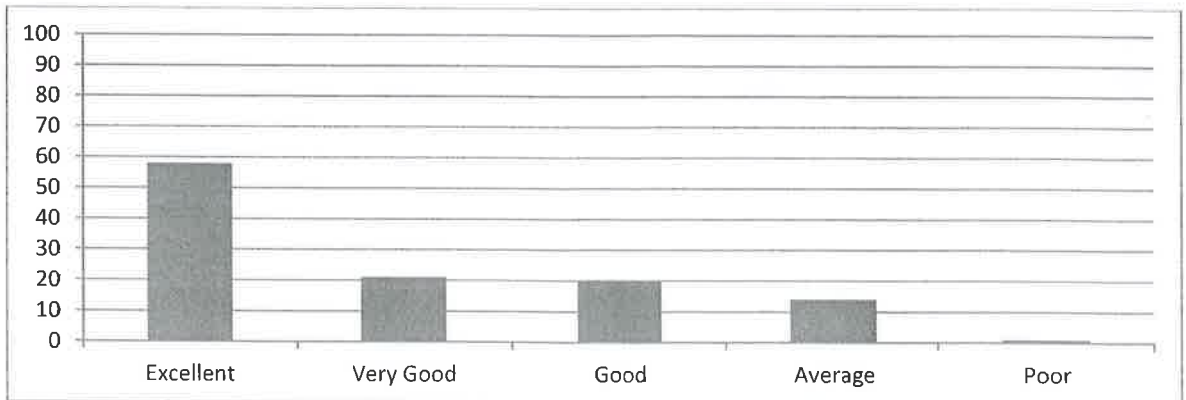
**9. Rate the percentage of courses offering LAB components.**

Excellent	Very Good	Good	Average	Poor
57	22	20	14	1



**10. Rate the composition of courses in terms of Basic Sciences, Engineering science, Humanities, Discipline core, discipline elective, open elective, project, etc.?**

Excellent	Very Good	Good	Average	Poor
58	21	20	14	1



**PRINCIPAL**  
**RISE KRISHNA SAI PRAKASAM**  
**GROUP OF INSTITUTIONS**  
**VALLUR - ONGOLE**

**HOD**  
**HEAD OF THE DEPARTMENT**  
**Dept. of Computer Science & Engineering**  
**RISE Krishna Sai Prakasam Group of Institutions**  
**Valluru (V), Ongole.**



# RISE KRISHNA SAI PRAKASAM GROUP OF INSTITUTIONS::ONGOLE

(Approved by AICTE-NEW DELHI, Affiliated to JNTUK KAKINADA)

(An ISO 9001:2015 certified Institute)


NH-16, Valluru-523272, Ongole, Prakasam (District), A.P

## INTERNAL QUALITY ASSURANCE CELL (IQAC)

### ANALYSIS OF STUDENT FEEDBACK ON CURRICULUM

Programme Name: UG (B. Tech)	Academic Year: 2018-19
Department Name: Computer Science & Engineering	Year/Semester: IV- I

S.No	Question	Excellent	Very Good	Good	Average	Poor
1.	Rate how challenging was the syllabus offered by the courses.	62	25	15	10	2
2	Rate the appropriate sequence of the courses provided in the curriculum.	61	24	17	11	1
3	Rate the depth of the syllabus of courses concerning the competencies expected by industry/current global scenarios.	62	23	17	10	2
4	Rate the sequence of the units/modules in courses.	62	22	17	11	2
5	Rate the adequateness of the prescribed text books and reference books mentioned for the courses.	59	24	19	11	1
6	Rate the syllabus content of the courses in terms of the burden on students.	61	25	18	10	0
7	Rate the design of courses in terms of extra learning or self-learning.	64	20	18	10	2
8	Rate the flexibility in choosing the elective courses concerning technology advancements.	60	25	19	10	0
9	Rate the percentage of courses offering LAB components.	60	23	19	10	2
10	Rate the composition of courses in terms of Basic Sciences, Engineering science, Humanities, Discipline core, discipline elective, open elective, project, etc.?	62	23	18	9	2

  
PRINCIPAL  
RISE KRISHNA SAI PRAKASAM  
GROUP OF INSTITUTIONS  
VALLUR - ONGOLE

  
HOD  
HEAD OF THE DEPARTMENT  
Dept. of Computer Science & Engineering  
RISE Krishna Sai Prakasam Group of Institutions  
Valluru (V), Ongole





## RISE KRISHNA SAI PRAKASAM GROUP OF INSTITUTIONS:: ONGOLE

(Approved by AICTE-NEW DELHI, Affiliated to JNTUK KAKINADA)

(An ISO 9001:2015 certified Institute)

NH-16, Valluru-523272, Ongole, Prakasam (District), A. P

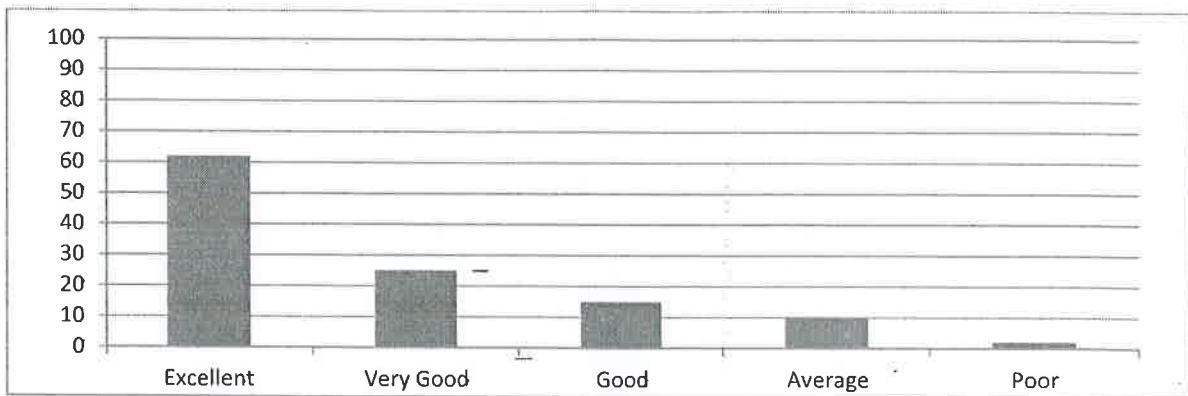
### STUDENT FEEDBACK ANALYSIS

#### DEPARTMENT OF COMPUTER SCIENCE AND ENGINEERING

##### ACADEMIC YEAR 2018-19 IV-B.TECH I-SEMESTER

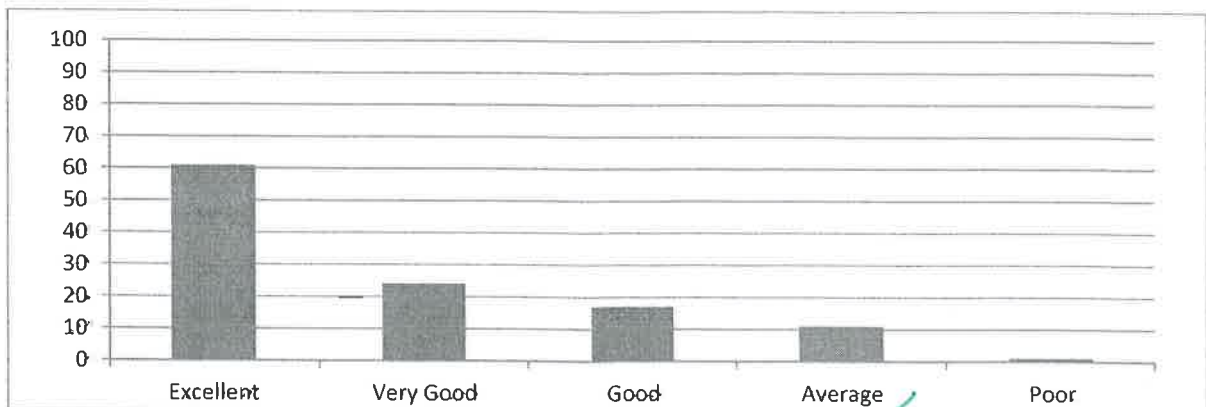
###### 1. Rate how challenging was the syllabus offered by the courses.

Excellent	Very Good	Good	Average	Poor
62	25	15	10	2



###### 2. Rate the appropriate sequence of the courses provided in the curriculum.

Excellent	Very Good	Good	Average	Poor
61	24	17	11	1



  
PRINCIPAL  
RISE KRISHNA SAI PRAKASAM  
GROUP OF INSTITUTIONS  
VALLUR - ONGOLE

**RISE KRISHNA SAI PRAKASAM GROUP OF INSTITUTIONS:: ONGOLE**

(Approved by AICTE-NEW DELHI, Affiliated to JNTUK KAKINADA)

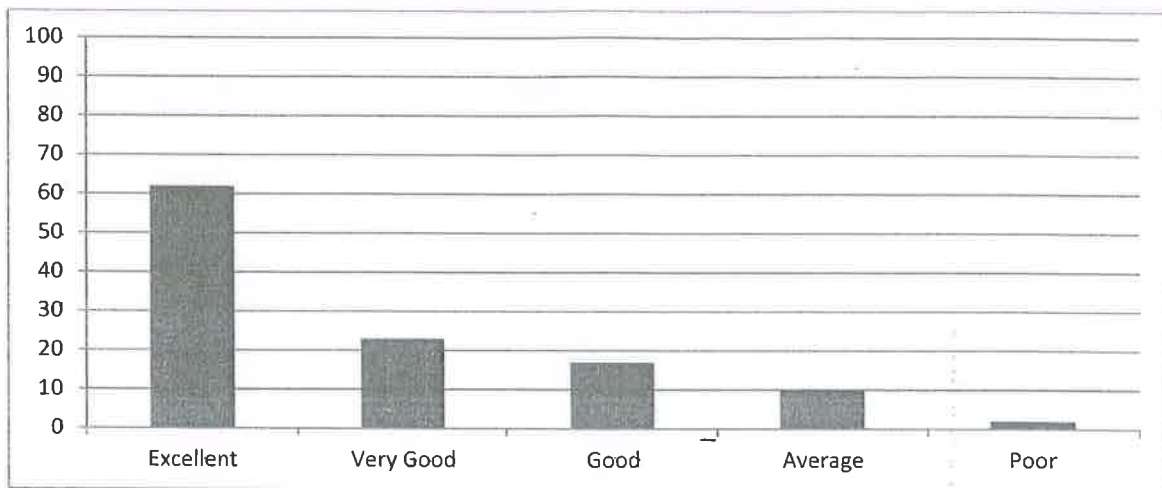
(An ISO 9001:2015 certified Institute)

NH-16, Valluru-523272, Ongole, Prakasam (District), A. P



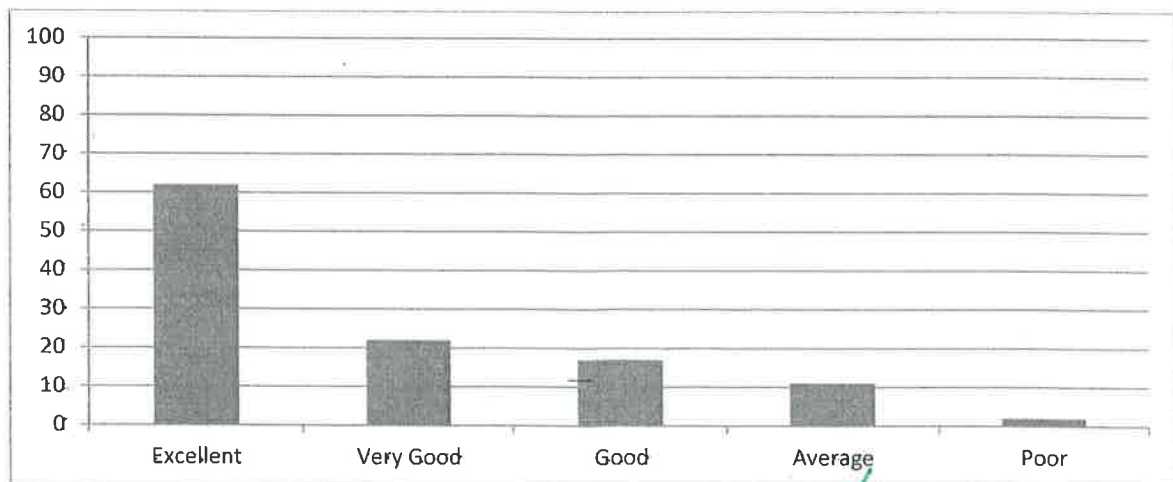
**3. Rate the depth of the syllabus of courses concerning the competencies expected by industry/current global scenarios.**

Excellent	Very Good	Good	Average	Poor
62	23	17	10	2



**4. Rate the sequence of the units/modules in courses.**

Excellent	Very Good	Good	Average	Poor
62	22	17	11	2



*[Handwritten Signature]*  
**PRINCIPAL**  
**RISE KRISHNA SAI PRAKASAM**  
**GROUP OF INSTITUTIONS**  
**VALLUR - ONGOLE**



**RISE KRISHNA SAI PRAKASAM GROUP OF INSTITUTIONS:: ONGOLE**

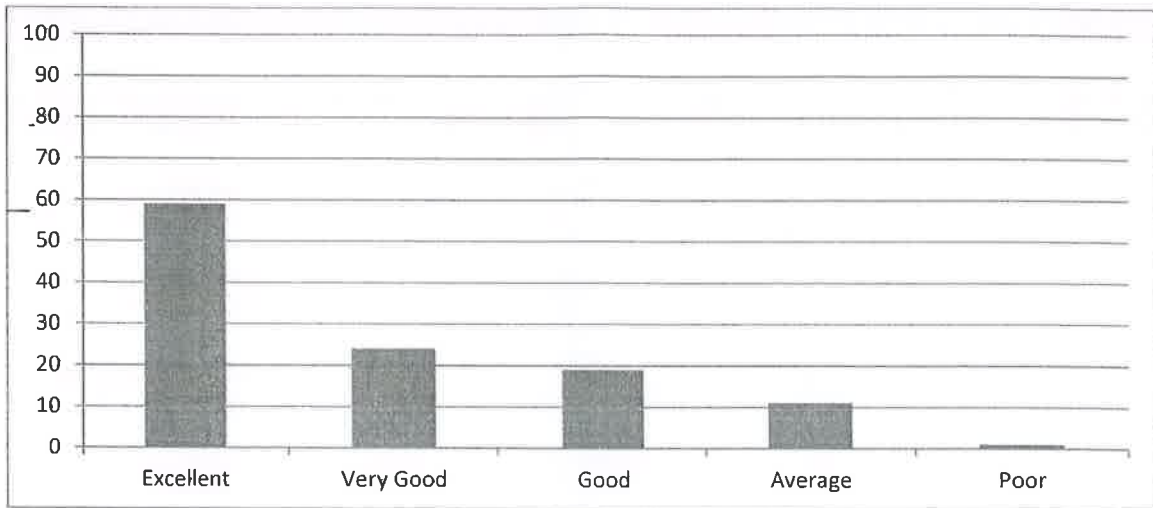
(Approved by AICTE-NEW DELHI, Affiliated to JNTUK KAKINADA)

(An ISO 9001:2015 certified Institute)

NH-16, Valluru-523272, Ongole, Prakasam (District), A. P

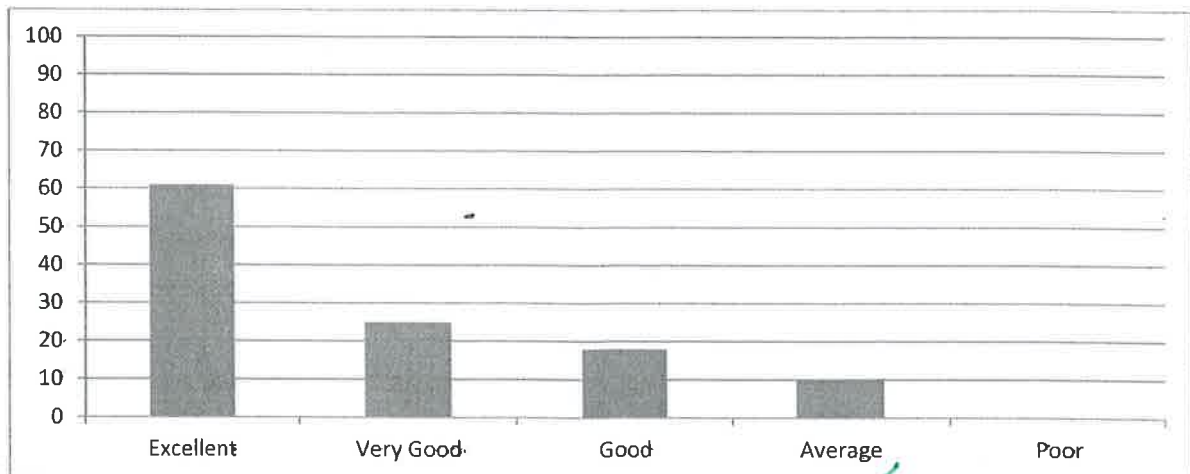
**5. Rate the adequateness of the prescribed text books and reference books mentioned for the courses.**

Excellent	Very Good	Good	Average	Poor
59	24	19	11	1



**6. Rate the syllabus content of the courses in terms of the burden on students.**

Excellent	Very Good	Good	Average	Poor
61	25	18	10	0



  
**PRINCIPAL**  
**RISE KRISHNA SAI PRAKASAM**  
**GROUP OF INSTITUTIONS**  
**VALLUR - ONGOLE**



## RISE KRISHNA SAI PRAKASAM GROUP OF INSTITUTIONS:: ONGOLE

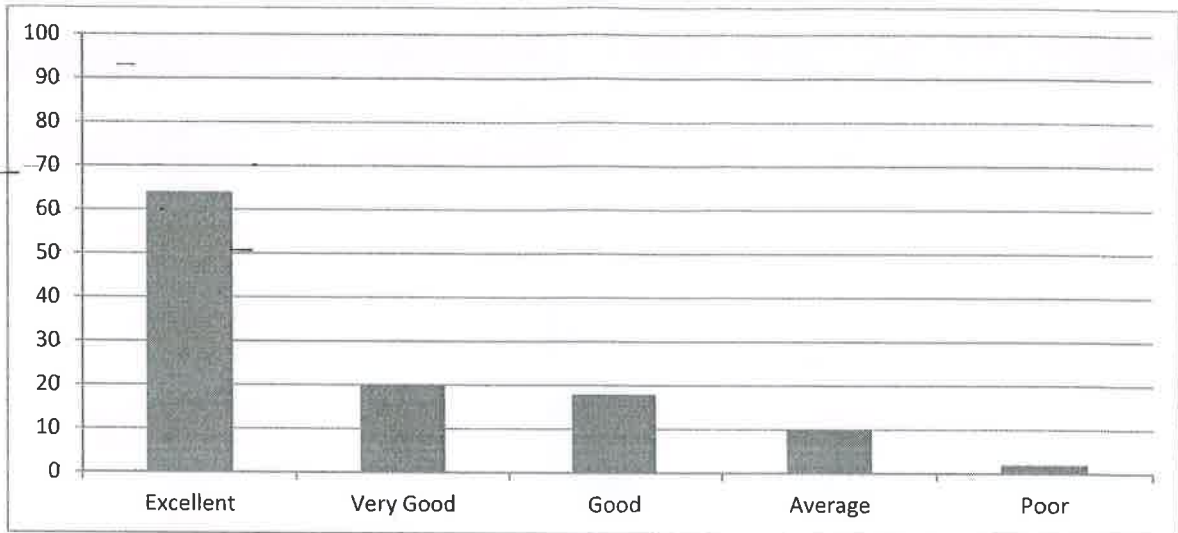
(Approved by AICTE-NEW DELHI, Affiliated to JNTUK KAKINADA)

(An ISO 9001:2015 certified Institute)

NH-16, Valluru-523272, Ongole, Prakasam (District), A. P

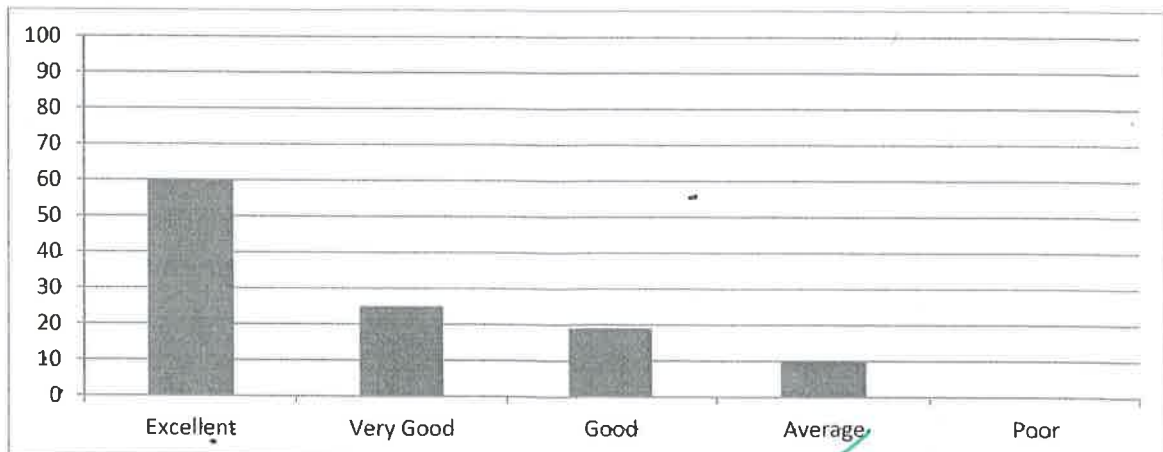
### 7. Rate the design of courses in terms of extra learning or self-learning.

Excellent	Very Good	Good	Average	Poor
64	20	18	10	2



### 8. Rate the flexibility in choosing the elective courses concerning technology advancements.

Excellent	Very Good	Good	Average	Poor
60	25	19	10	0



PRINCIPAL  
RISE KRISHNA SAI PRAKASAM  
GROUP OF INSTITUTIONS  
VALLUR - ONGOLE



**RISE KRISHNA SAI PRAKASAM GROUP OF INSTITUTIONS:: ONGOLE**

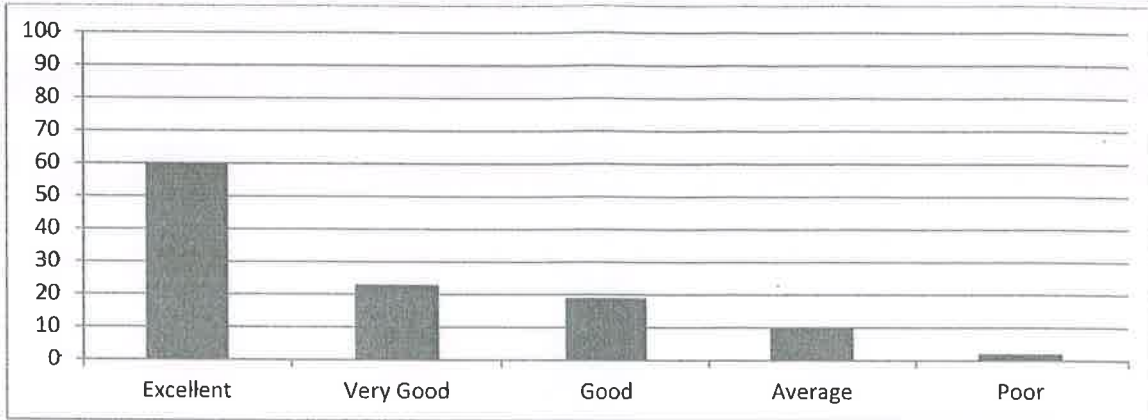
(Approved by AICTE-NEW DELHI, Affiliated to JNTUK KAKINADA)

(An ISO 9001:2015 certified Institute)

NH-16, Valluru-523272, Ongole, Prakasam (District), A. P

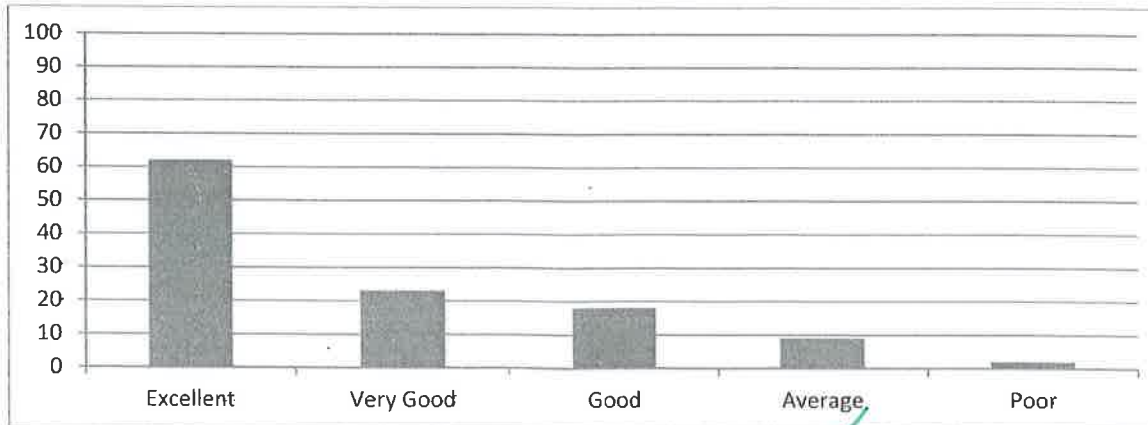
**9. Rate the percentage of courses offering LAB components.**

Excellent	Very Good	Good	Average	Poor
60	23	19	10	2



**10. Rate the composition of courses in terms of Basic Sciences, Engineering science, Humanities, Discipline core, discipline elective, open elective, project, etc.?**

Excellent	Very Good	Good	Average	Poor
62	23	18	9	2



**PRINCIPAL  
RISE KRISHNA SAI PRAKASAM  
GROUP OF INSTITUTIONS  
VALLUR - ONGOLE**

**HEAD OF THE DEPARTMENT  
Dept. of Computer Science & Engineering  
RISE Krishna Sai Prakasam Group of Institutions  
Valluru (V), Ongole.**





**RISE KRISHNA SAI PRAKASAM GROUP OF INSTITUTIONS::ONGOLE**

(Approved by AICTE-NEW DELHI, Affiliated to JNTUK KAKINADA)

(An ISO 9001:2015 certified Institute)

NH-16, Valluru-523272, Ongole, Prakasam (District), A.P

**INTERNAL QUALITY ASSURANCE CELL (IQAC)**

**ANALYSIS OF STUDENT FEEDBACK ON CURRICULUM**

<b>Programme Name: UG (B. Tech)</b>	<b>Academic Year:2018-19</b>
<b>Department Name: Computer Science &amp; Engineering</b>	<b>Year/Semester: II-II</b>

S.No	Question	Excellent	Very Good	Good	Average	Poor
1	Rate how challenging was the syllabus offered by the courses.	73	29	6	2	0
2	Rate the appropriate sequence of the courses provided in the curriculum.	68	28	11	3	0
3	Rate the depth of the syllabus of courses concerning the competencies expected by industry/current global scenarios.	65	25	15	4	1
4	Rate the sequence of the units/modules in courses.	68	26	10	4	2
5	Rate the adequateness of the prescribed text books and reference books mentioned for the courses.	66	25	13	6	0
6	Rate the syllabus content of the courses in terms of the burden on students.	71	19	15	3	2
7	Rate the design of courses in terms of extra learning or self-learning.	61	21	16	10	2
8	Rate the flexibility in choosing the elective courses concerning technology advancements.	65	28	10	6	1
9	Rate the percentage of courses offering LAB components.	62	22	17	9	0
10	Rate the composition of courses in terms of Basic Sciences, Engineering science, Humanities, Discipline core, discipline elective, open elective, project, etc.?	63	19	16	10	2

**PRINCIPAL**  
**RISE KRISHNA SAI PRAKASAM**  
**GROUP OF INSTITUTIONS**  
**VALLUR - ONGOLE**

**HOD**  
**HEAD OF THE DEPARTMENT**  
**Dept. of Computer Science & Engineering**  
**RISE Krishna Sai Prakasam Group of Institutions**  
**Valluru (V), Ongole.**



**RISE KRISHNA SAI PRAKASAM GROUP OF INSTITUTIONS::ONGOLE**

(Approved by AICTE-NEW DELHI, Affiliated to JNTUK KAKINADA)

(An ISO 9001:2015 certified Institute)

NH-16, Valluru-523272, Ongole, Prakasam (District), A. P

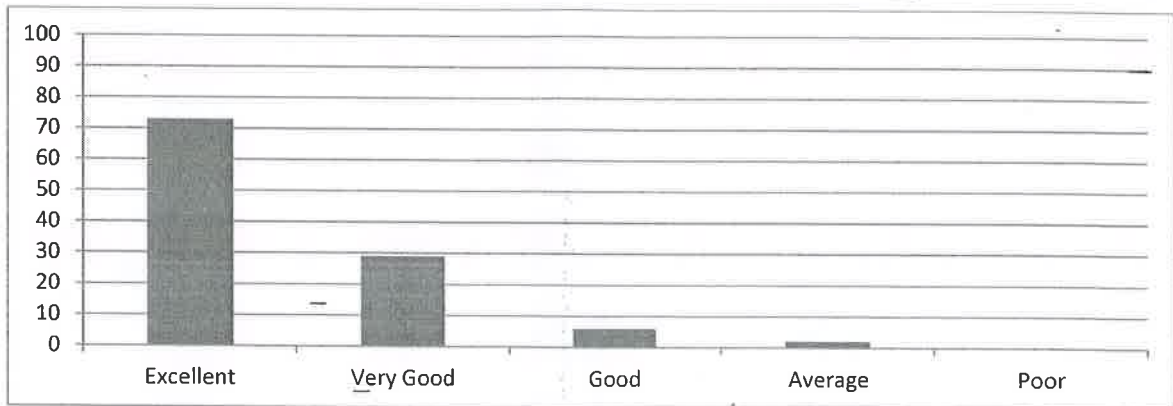
**STUDENT FEEDBACK ANALYSIS**

**DEPARTMENT OF COMPUTER SCIENCE AND ENGINEERING**

**ACADEMIC YEAR 2018-19 II B.TECH II- SEMESTER**

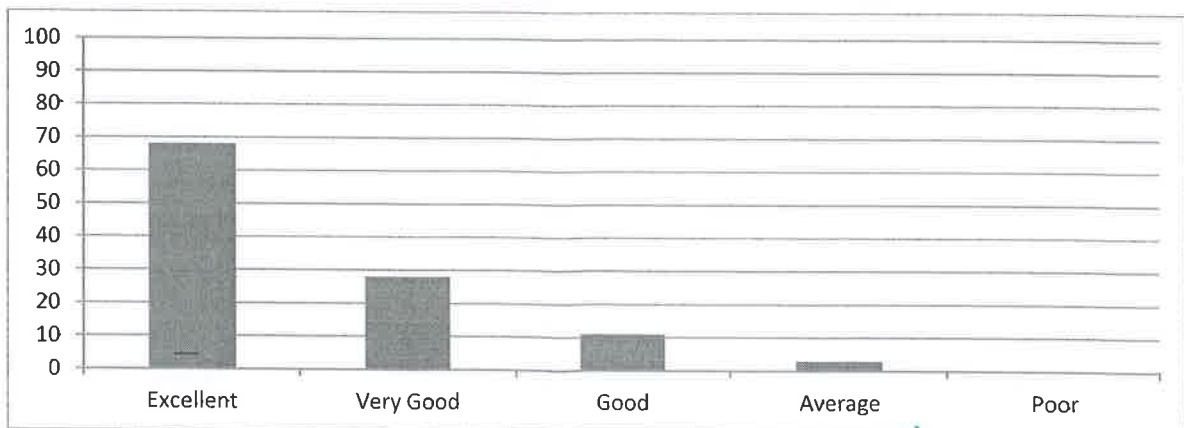
**1. Rate how challenging was the syllabus offered by the courses.**

Excellent	Very Good	Good	Average	Poor
73	29	6	2	0



**2. Rate the appropriate sequence of the courses provided in the curriculum.**

Excellent	Very Good	Good	Average	Poor
68	28	11	3	0



**PRINCIPAL**  
**RISE KRISHNA SAI PRAKASAM**  
**GROUP OF INSTITUTIONS**  
**VALLUR - ONGOLE**



**RISE KRISHNA SAI PRAKASAM GROUP OF INSTITUTIONS::ONGOLE**

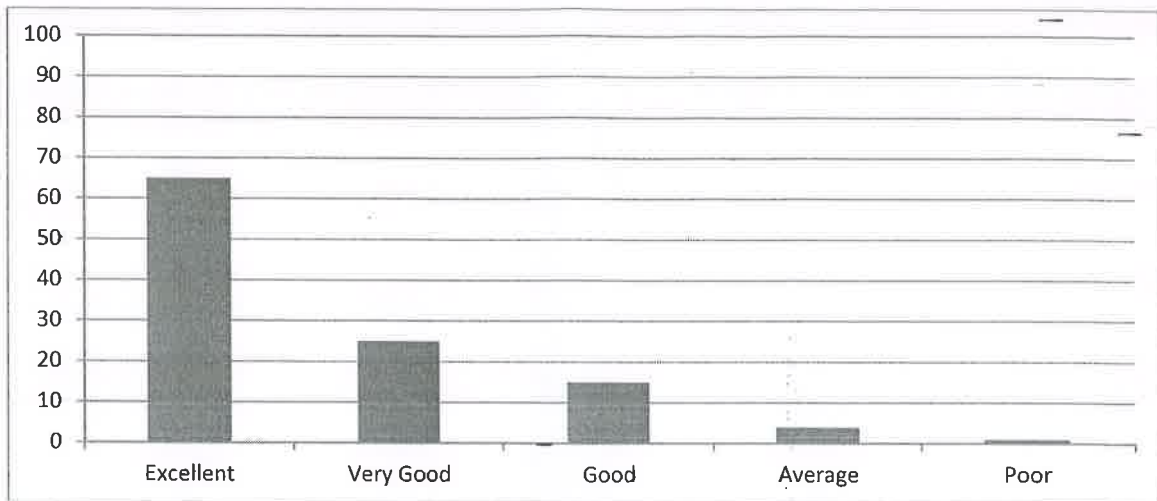
(Approved by AICTE-NEW DELHI, Affiliated to JNTUK KAKINADA)

(An ISO 9001:2015 certified Institute)

NH-16, Valluru-523272, Ongole, Prakasam (District), A. P

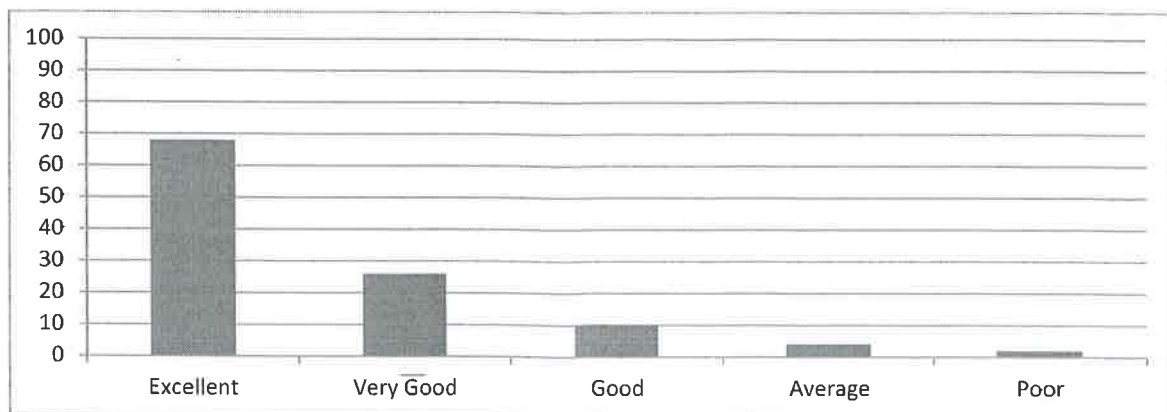
**3. Rate the depth of the syllabus of courses concerning the competencies expected by industry/current global scenarios.**

Excellent	Very Good	Good	Average	Poor
65	25	15	4	1



**4. Rate the sequence of the units/modules in courses.**

Excellent	Very Good	Good	Average	Poor
68	26	10	4	2



**PRINCIPAL  
RISE KRISHNA SAI PRAKASAM  
GROUP OF INSTITUTIONS  
VALLUR - ONGOLE**



**RISE KRISHNA SAI PRAKASAM GROUP OF INSTITUTIONS::ONGOLE**

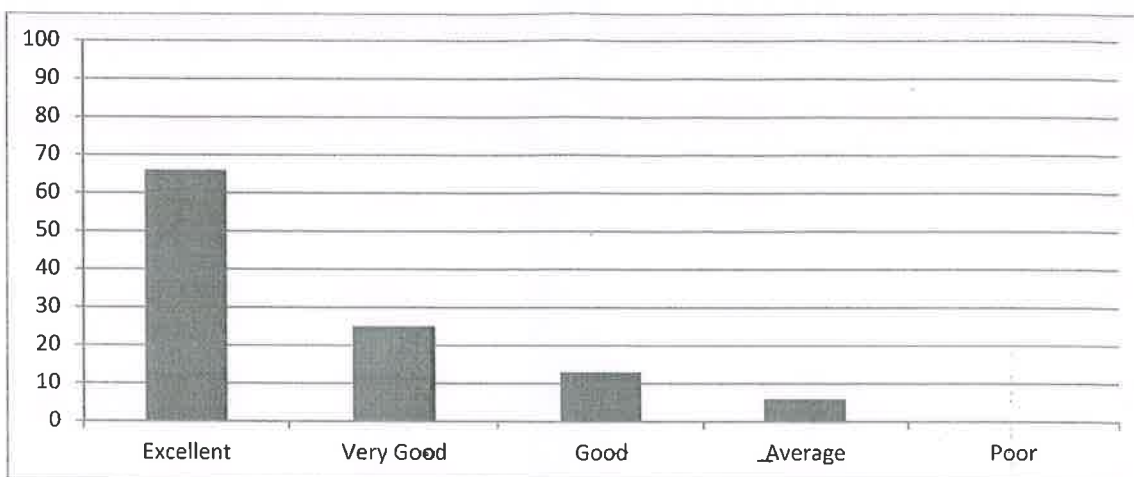
(Approved by AICTE-NEW DELHI, Affiliated to JNTUK KAKINADA)

(An ISO 9001:2015 certified Institute)

NH-16, Valluru-523272, Ongole, Prakasam (District), A. P

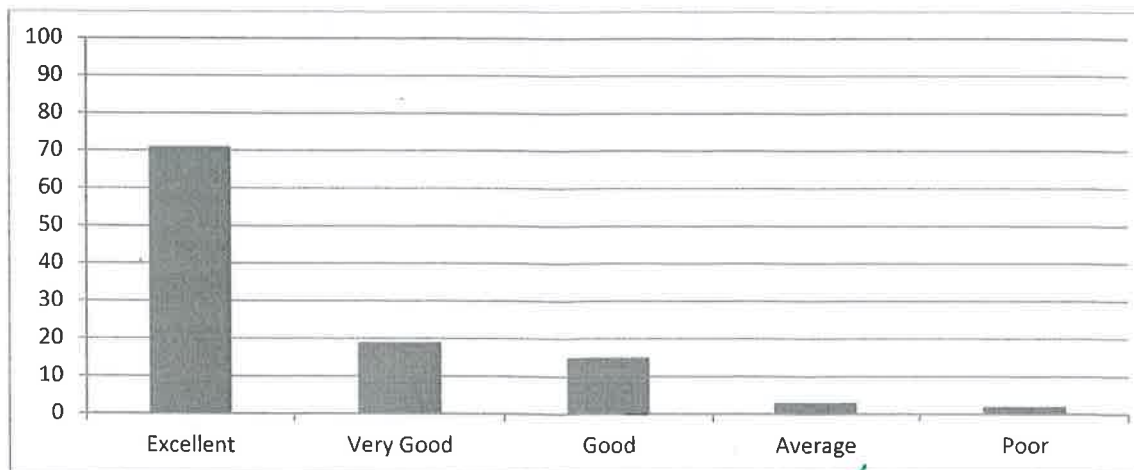
**5. Rate the adequateness of the prescribed text books and reference books mentioned for the courses.**

Excellent	Very Good	Good	Average	Poor
66	25	13	6	0



**6. Rate the syllabus content of the courses in terms of the burden on students.**

Excellent	Very Good	Good	Average	Poor
71	19	15	3	2



*[Handwritten Signature]*  
**PRINCIPAL  
RISE KRISHNA SAI PRAKASAM  
GROUP OF INSTITUTIONS  
VALLUR - ONGOLE**



## RISE KRISHNA SAI PRAKASAM GROUP OF INSTITUTIONS::ONGOLE

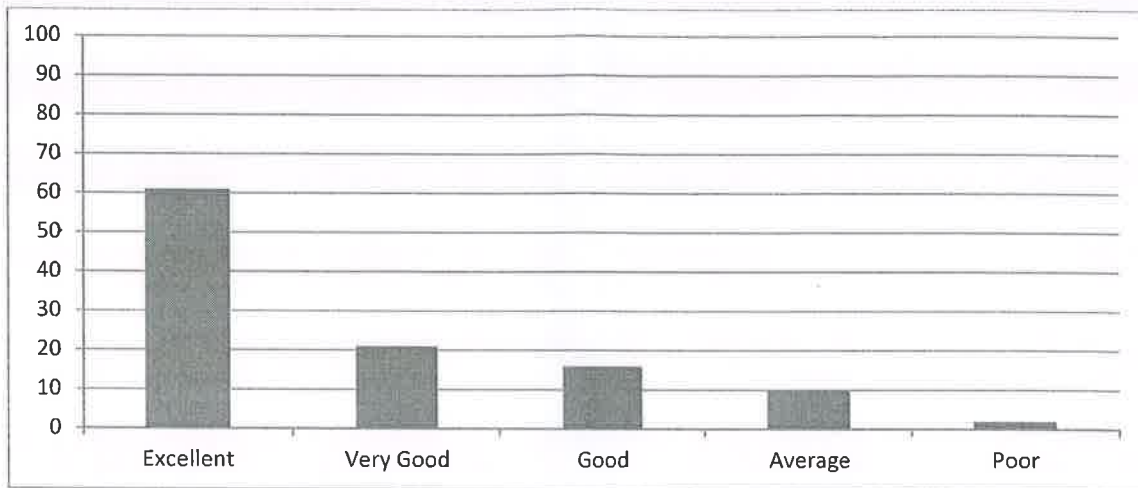
(Approved by AICTE-NEW DELHI, Affiliated to JNTUK KAKINADA)

(An ISO 9001:2015 certified Institute)

NH-16, Valluru-523272, Ongole, Prakasam (District), A. P

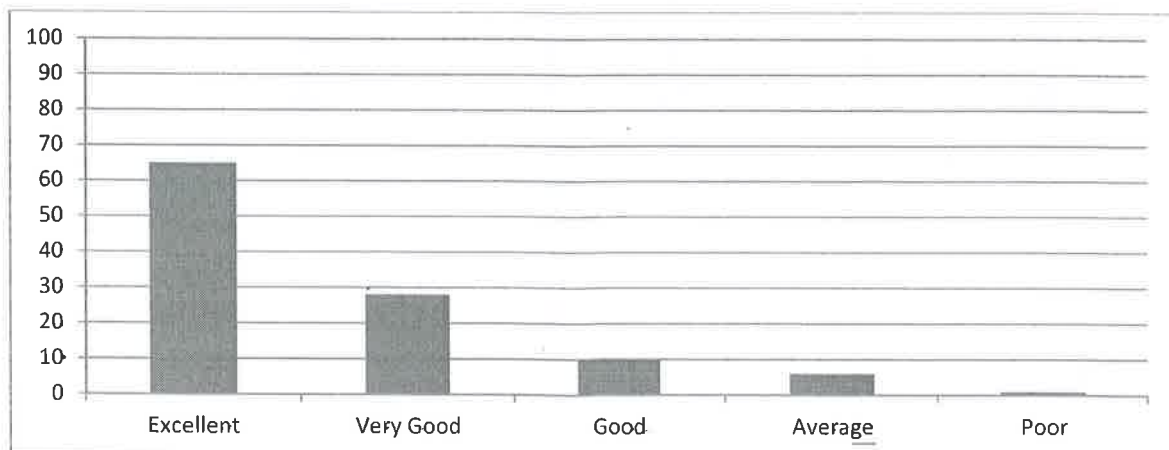
### 7. Rate the design of courses in terms of extra learning or self-learning.

Excellent	Very Good	Good	Average	Poor
61	21	16	10	2



### 8. Rate the flexibility in choosing the elective courses concerning technology advancements.

Excellent	Very Good	Good	Average	Poor
65	28	10	6	1



  
PRINCIPAL  
RISE KRISHNA SAI PRAKASAM  
GROUP OF INSTITUTIONS  
VALLUR - ONGOLE





**RISE KRISHNA SAI PRAKASAM GROUP OF INSTITUTIONS::ONGOLE**

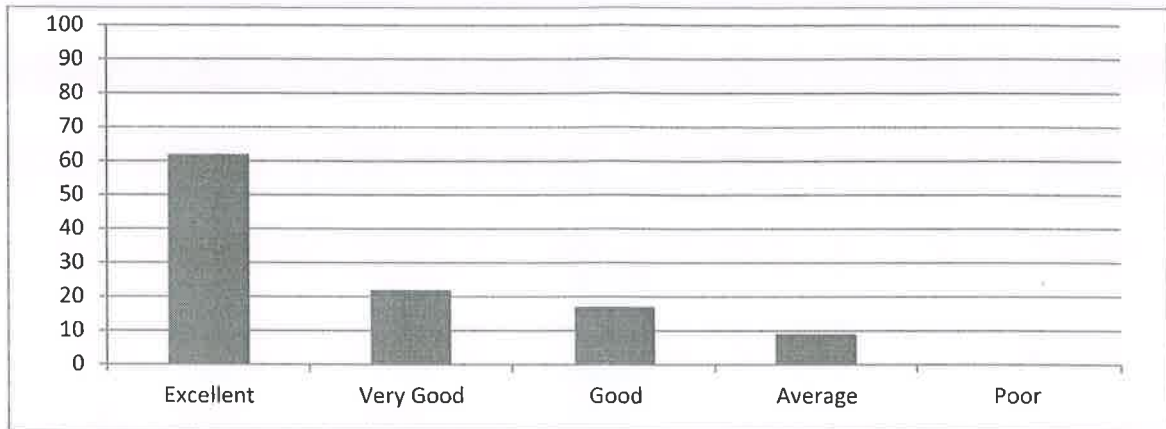
(Approved by AICTE-NEW DELHI, Affiliated to JNTUK KAKINADA)

(An ISO 9001:2015 certified Institute)

NH-16, Valluru-523272, Ongole, Prakasam (District), A. P

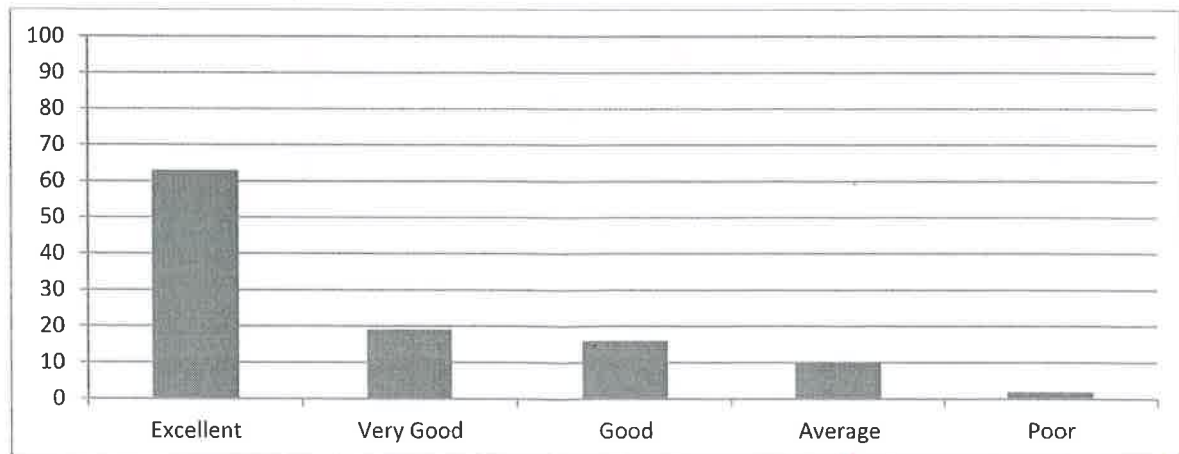
**9. Rate the percentage of courses offering LAB components.**

Excellent	Very Good	Good	Average	Poor
62	22	17	9	0



**10. Rate the composition of courses in terms of Basic Sciences, Engineering science, Humanities, Discipline core, discipline elective, open elective, project, etc.?**

Excellent	Very Good	Good	Average	Poor
63	19	16	10	2



*[Handwritten signature]*

**PRINCIPAL**  
**RISE KRISHNA SAI PRAKASAM**  
**GROUP OF INSTITUTIONS**  
**VALLURU - ONGOLE**

**HOD**  
**HEAD OF THE DEPARTMENT**  
**Dept. of Computer Science & Engineering**  
**RISE Krishna Sai Prakasam Group of Institutions**  
**Valluru (V), Ongole.**



# RISE KRISHNA SAI PRAKASAM GROUP OF INSTITUTIONS::ONGOLE

(Approved by AICTE-NEW DELHI, Affiliated to JNTUK KAKINADA)

(An ISO 9001:2015 certified Institute)

NH-16, Valluru-523272, Ongole, Prakasam (District), A.P

## INTERNAL QUALITY ASSURANCE CELL (IQAC)

### ANALYSIS OF STUDENT FEEDBACK ON CURRICULUM

<b>Programme Name: UG (B. Tech)</b>	<b>Academic Year: 2018-19</b>
<b>Department Name: Computer Science &amp; Engineering</b>	<b>Year/Semester: III-II</b>

S.No	Question	Excellent	Very Good	Good	Average	Poor
1	Rate how challenging was the syllabus offered by the courses.	64	25	16	8	0
2	Rate the appropriate sequence of the courses provided in the curriculum.	56	27	17	12	1
3	Rate the depth of the syllabus of courses concerning the competencies expected by industry/current global scenarios.	57	22	20	13	1
4	Rate the sequence of the units/modules in courses.	54	26	21	11	1
5	Rate the adequateness of the prescribed text books and reference books mentioned for the courses.	58	21	18	15	1
6	Rate the syllabus content of the courses in terms of the burden on students.	61	20	20	11	1
7	Rate the design of courses in terms of extra learning or self-learning.	57	24	19	12	1
8	Rate the flexibility in choosing the elective courses concerning technology advancements.	59	23	18	11	2
9	Rate the percentage of courses offering LAB components.	57	23	21	12	0
10	Rate the composition of courses in terms of Basic Sciences, Engineering science, Humanities, Discipline core, discipline elective, open elective, project, etc.?	56	24	19	12	2

**PRINCIPAL**  
**RISE KRISHNA SAI PRAKASAM**  
**GROUP OF INSTITUTIONS**  
**VALLUR - ONGOLE**

**HOD**  
**HEAD OF THE DEPARTMENT**  
**Dept. of Computer Science & Engineering**  
**RISE Krishna Sai Prakasam Group of Institution**  
**Valluru (V), Ongole.**



## RISE KRISHNA SAI PRAKASAM GROUP OF INSTITUTIONS::ONGOLE

(Approved by AICTE-NEW DELHI, Affiliated to JNTUK KAKINADA)

(An ISO 9001:2015 certified Institute)

NH-16, Valluru-523272, Ongole, Prakasam (District), A. P

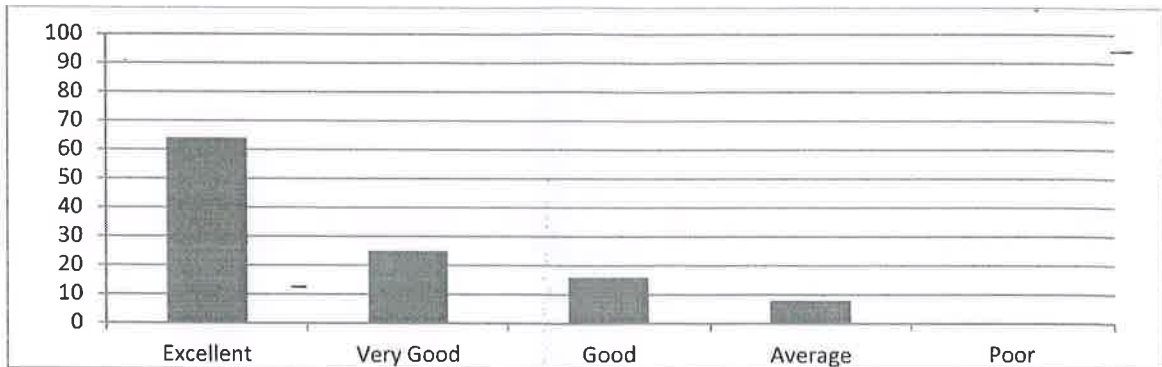
### STUDENT FEEDBACK ANALYSIS

#### DEPARTMENT OF COMPUTER SCIENCE AND ENGINEERING

#### ACADEMIC YEAR 2018-19 III-B.TECH II-SEMESTER

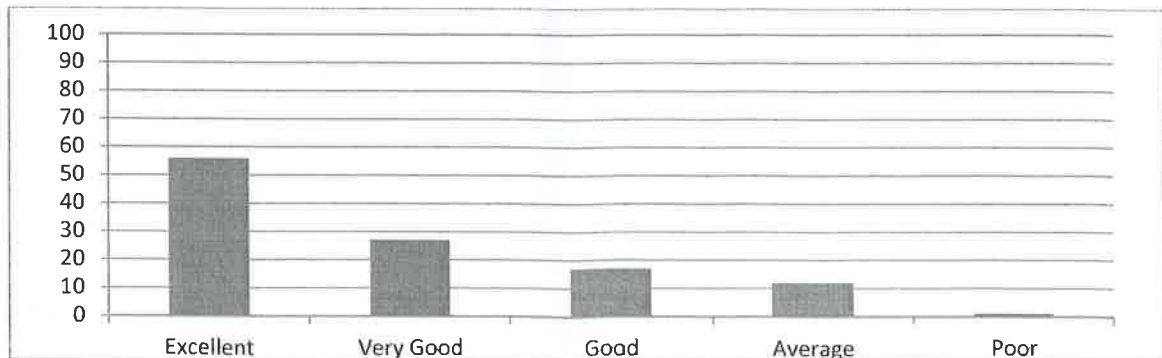
##### 1. Rate how challenging was the syllabus offered by the courses.

Excellent	Very Good	Good	Average	Poor
64	25	16	8	0



##### 2. Rate the appropriate sequence of the courses provided in the curriculum.

Excellent	Very Good	Good	Average	Poor
56	27	17	12	1



##### 3. Rate the depth of the syllabus of courses concerning the competencies expected by industry/current global scenarios.

PRINCIPAL  
RISE KRISHNA SAI PRAKASAM  
GROUP OF INSTITUTIONS  
VALLUR - ONGOLE



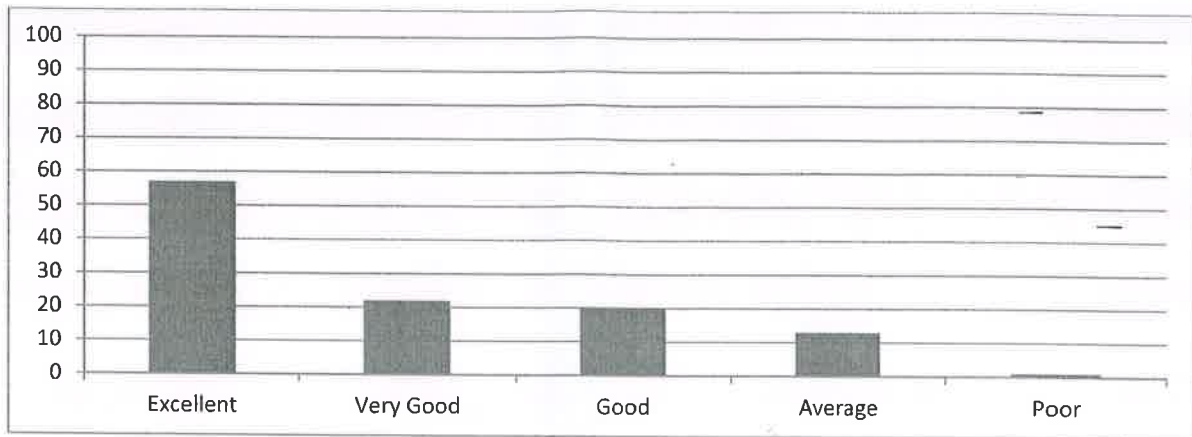
## RISE KRISHNA SAI PRAKASAM GROUP OF INSTITUTIONS::ONGOLE

(Approved by AICTE-NEW DELHI, Affiliated to JNTUK KAKINADA)

(An ISO 9001:2015 certified Institute)

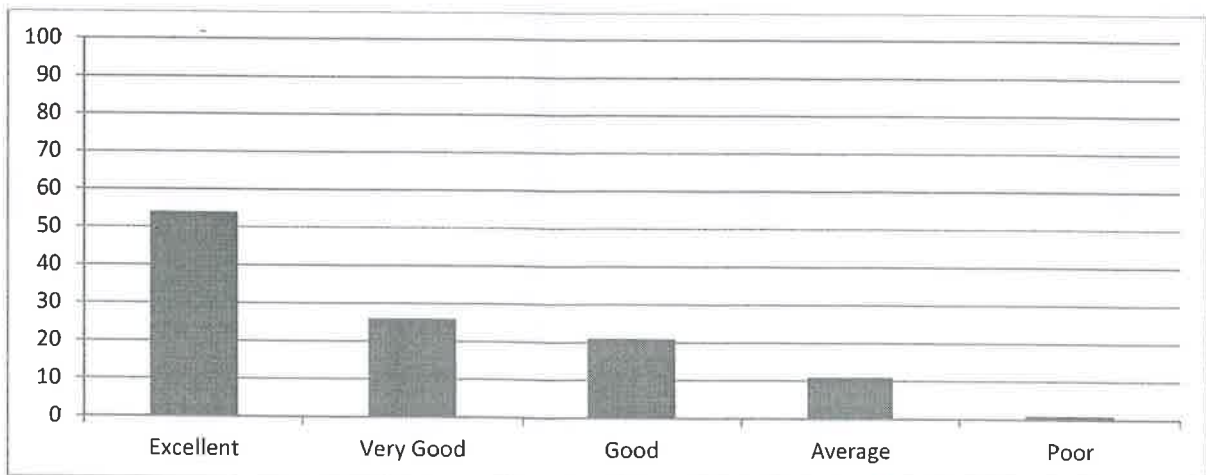
NH-16, Valluru-523272, Ongole, Prakasam (District), A. P

Excellent	Very Good	Good	Average	Poor
57	22	20	13	1



#### 4. Rate the sequence of the units/modules in courses.

Excellent	Very Good	Good	Average	Poor
54	26	21	11	1



  
PRINCIPAL  
RISE KRISHNA SAI PRAKASAM  
GROUP OF INSTITUTIONS  
VALLUR - ONGOLE



## RISE KRISHNA SAI PRAKASAM GROUP OF INSTITUTIONS::ONGOLE

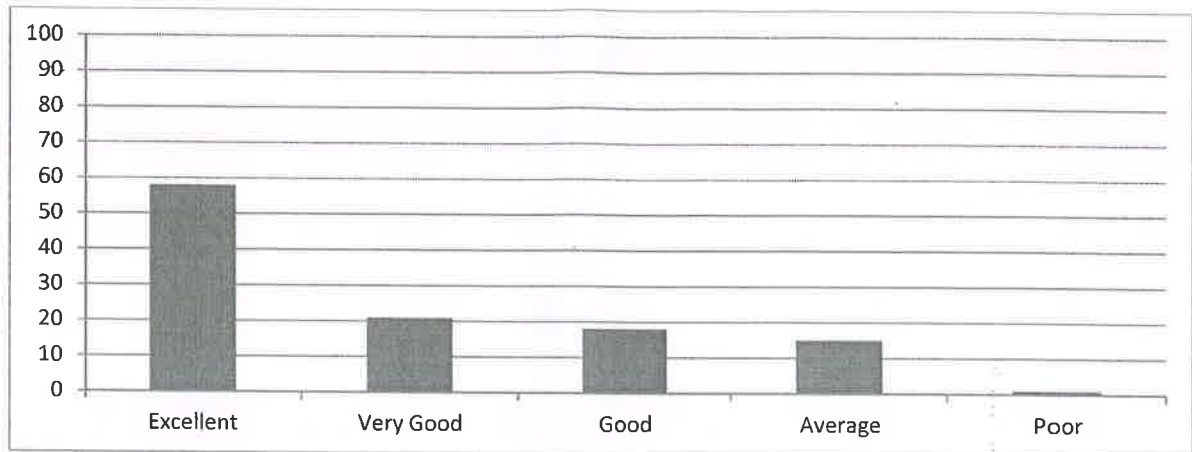
(Approved by AICTE-NEW DELHI, Affiliated to JNTUK KAKINADA)

(An ISO 9001:2015 certified Institute)

NH-16, Valluru-523272, Ongole, Prakasam (District), A. P

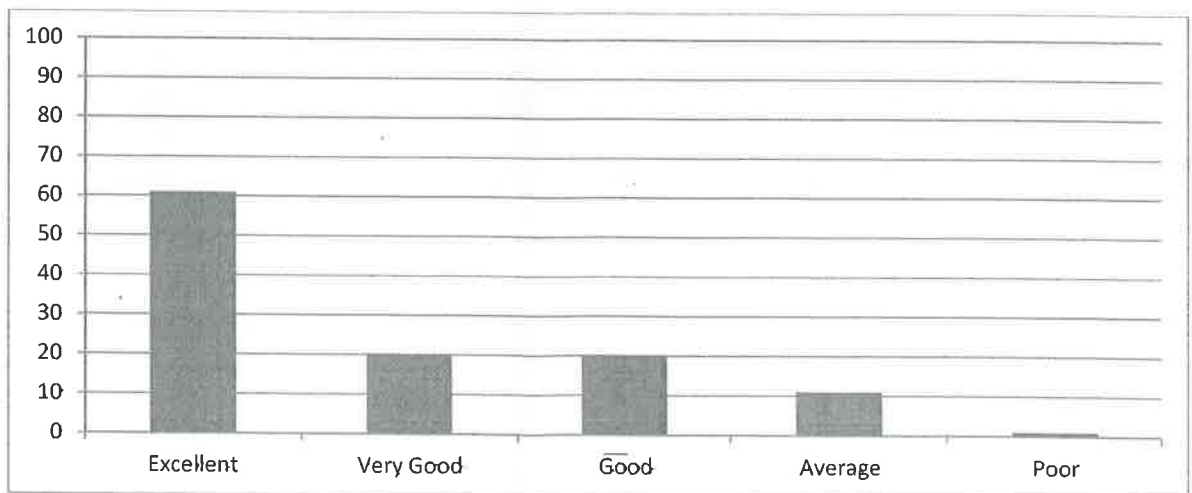
### 5. Rate the adequateness of the prescribed text books and reference books mentioned for the courses.

Excellent	Very Good	Good	Average	Poor
58	21	18	15	1



### 6. Rate the syllabus content of the courses in terms of the burden on students.

Excellent	Very Good	Good	Average	Poor
61	20	20	11	1



  
PRINCIPAL  
RISE KRISHNA SAI PRAKASAM  
GROUP OF INSTITUTIONS  
VALLUR - ONGOLE





## RISE KRISHNA SAI PRAKASAM GROUP OF INSTITUTIONS::ONGOLE

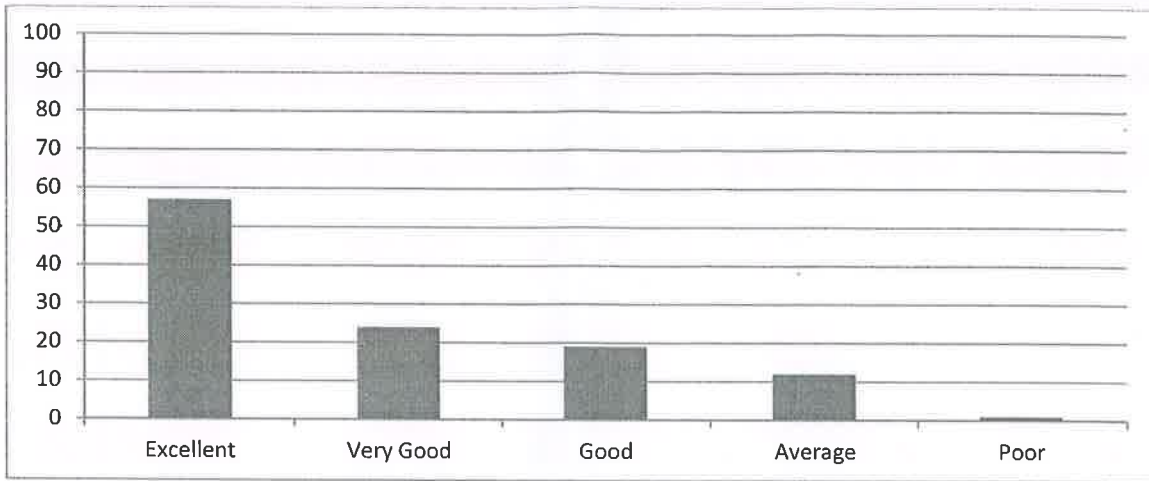
(Approved by AICTE-NEW DELHI, Affiliated to JNTUK KAKINADA)

(An ISO 9001:2015 certified Institute)

NH-16, Valluru-523272, Ongole, Prakasam (District), A. P

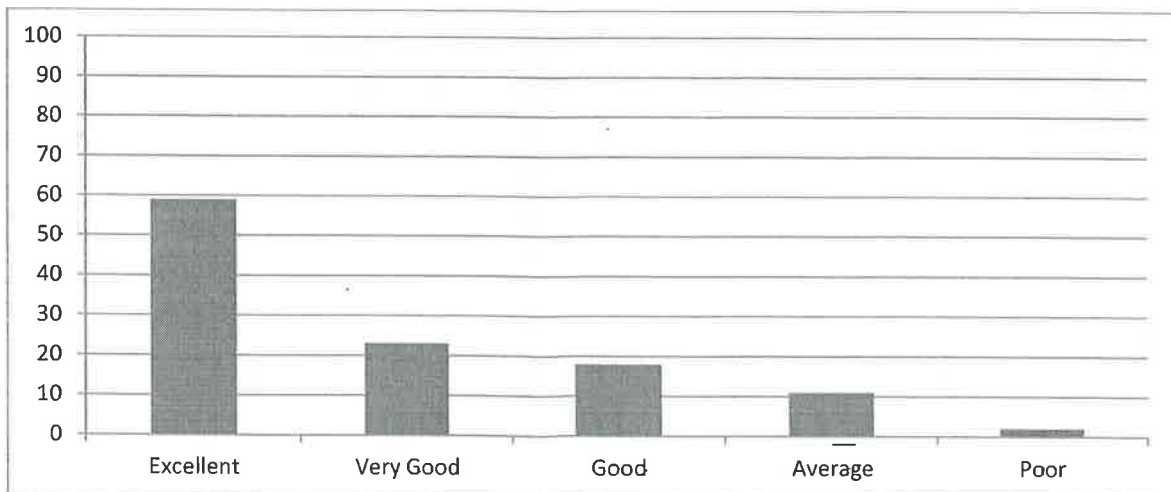
### 7. Rate the design of courses in terms of extra learning or self-learning.

Excellent	Very Good	Good	Average	Poor
57	24	19	12	1



### 8. Rate the flexibility in choosing the elective courses concerning technology advancements.

Excellent	Very Good	Good	Average	Poor
59	23	18	11	2



  
PRINCIPAL  
RISE KRISHNA SAI PRAKASAM  
GROUP OF INSTITUTIONS  
VALLUR - ONGOLE



**RISE KRISHNA SAI PRAKASAM GROUP OF INSTITUTIONS::ONGOLE**

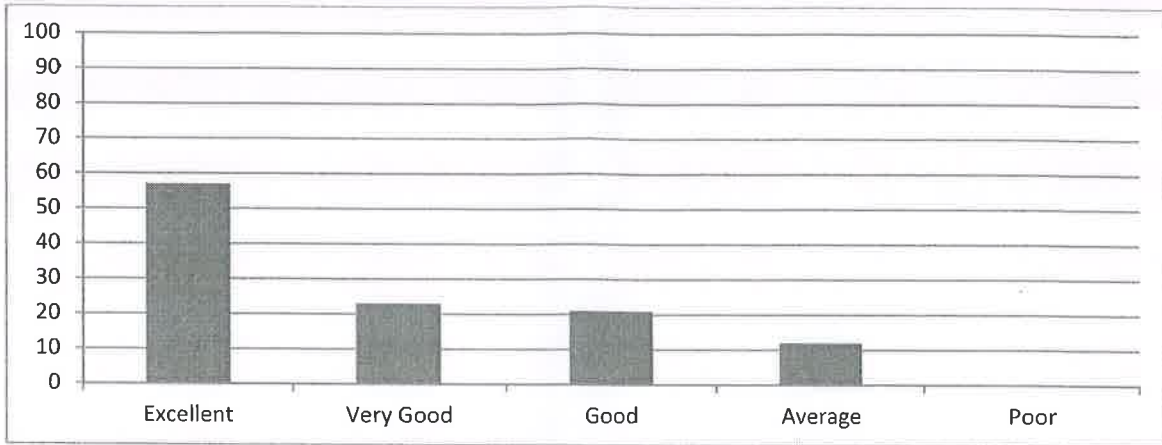
(Approved by AICTE-NEW DELHI, Affiliated to JNTUK KAKINADA)

(An ISO 9001:2015 certified Institute)

NH-16, Valluru-523272, Ongole, Prakasam (District), A. P

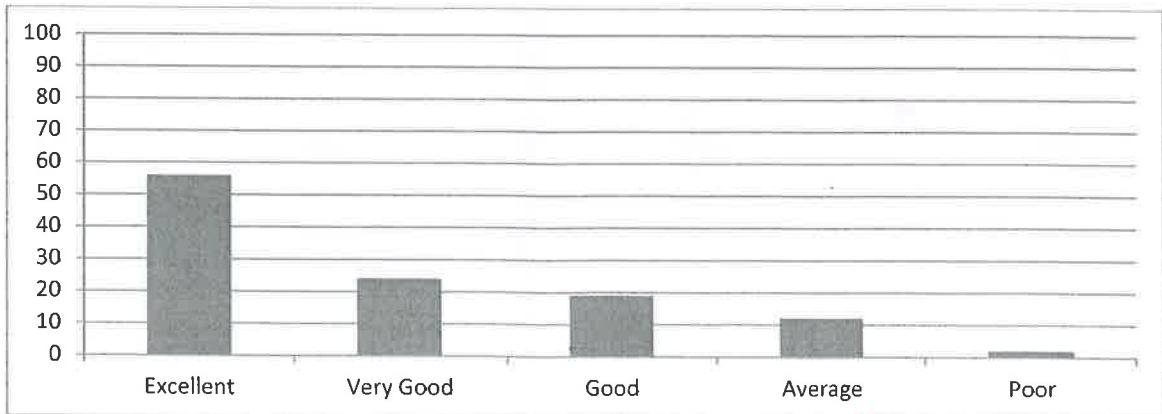
**9. Rate the percentage of courses offering LAB components.**

Excellent	Very Good	Good	Average	Poor
57	23	21	12	0



**10. Rate the composition of courses in terms of Basic Sciences, Engineering science, Humanities, Discipline core, discipline elective, open elective, project, etc.?**

Excellent	Very Good	Good	Average	Poor
56	24	19	12	2



*[Handwritten Signature]*  
PRINCIPAL  
RISE KRISHNA SAI PRAKASAM  
GROUP OF INSTITUTIONS  
VALLUR - ONGOLE

*[Handwritten Signature]*  
HOD  
HEAD OF THE DEPARTMENT  
Dept. of Computer Science & Engineering  
RISE Krishna Sai Prakasam Group of Institutions  
Valluru (V), Ongole



# RISE KRISHNA SAI PRAKASAM GROUP OF INSTITUTIONS::ONGOLE

(Approved by AICTE-NEW DELHI, Affiliated to JNTUK KAKINADA)

(An ISO 9001:2015 certified Institute)

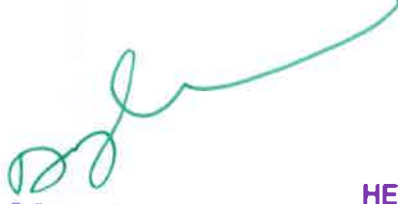
NH-16, Valluru-523272, Ongole, Prakasam (District), A.P


## INTERNAL QUALITY ASSURANCE CELL (IQAC)

### ANALYSIS OF STUDENT FEEDBACK ON CURRICULUM

Programme Name: UG (B. Tech)	Academic Year: 2018-19
Department Name: Computer Science & Engineering	Year/Semester: IV-II

S.No	Question	Excellent	Very Good	Good	Average	Poor
1	Rate how challenging was the syllabus offered by the courses.	62	24	15	10	1
2	Rate the appropriate sequence of the courses provided in the curriculum.	60	24	16	10	2
3	Rate the depth of the syllabus of courses concerning the competencies expected by industry/current global scenarios.	61	23	18	9	1
4	Rate the sequence of the units/modules in courses.	61	21	17	11	2
5	Rate the adequateness of the prescribed text books and reference books mentioned for the courses.	60	22	18	11	1
6	Rate the syllabus content of the courses in terms of the burden on students.	60	26	15	10	1
7	Rate the design of courses in terms of extra learning or self-learning.	60	21	19	10	2
8	Rate the flexibility in choosing the elective courses concerning technology advancements.	59	24	19	10	0
9	Rate the percentage of courses offering LAB components.	60	22	19	10	1
10	Rate the composition of courses in terms of Basic Sciences, Engineering science, Humanities, Discipline core, discipline elective, open elective, project, etc.?	63	22	18	8	1

  
PRINCIPAL  
RISE KRISHNA SAI PRAKASAM  
GROUP OF INSTITUTIONS  
VALLUR - ONGOLE

  
HEAD OF THE DEPARTMENT  
Dept. of Computer Science & Engineering  
RISE Krishna Sai Prakasam Group of Institutions  
Valluru (V), Ongole.



## RISE KRISHNA SAI PRAKASAM GROUP OF INSTITUTIONS:: ONGOLE

(Approved by AICTE-NEW DELHI, Affiliated to JNTUK KAKINADA)

(An ISO 9001:2015 certified Institute)

NH-16, Valluru-523272, Ongole, Prakasam (District), A. P

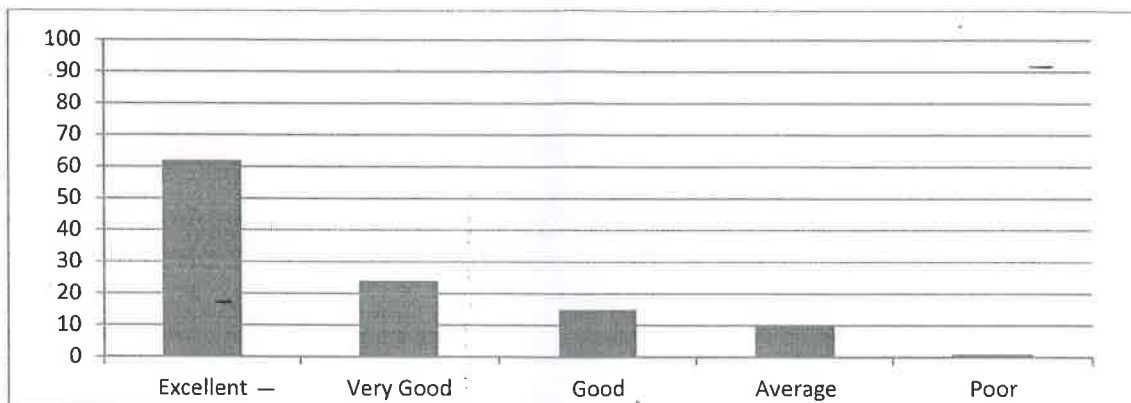
### STUDENT FEEDBACK ANALYSIS

#### DEPARTMENT OF COMPUTER SCIENCE AND ENGINEERING

#### ACADEMIC YEAR 2018-19 IV-B.TECH II-SEMESTER

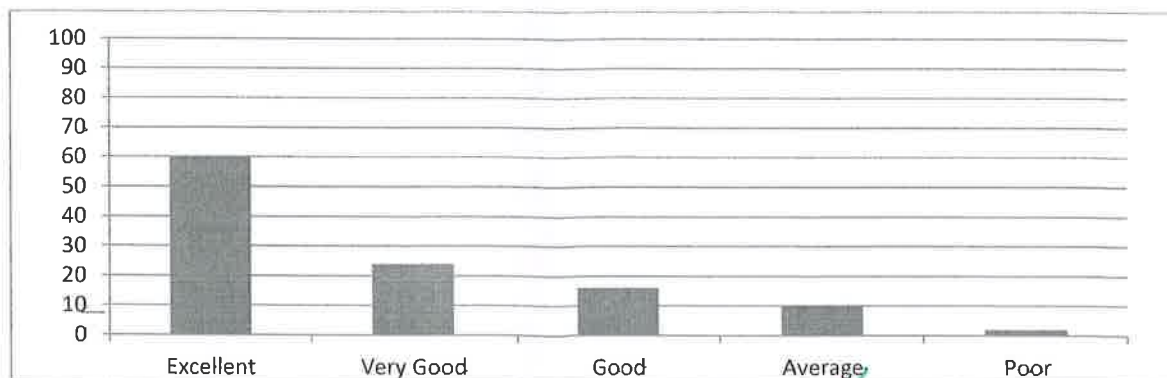
##### 1. Rate how challenging was the syllabus offered by the courses.

Excellent	Very Good	Good	Average	Poor
62	24	15	10	1



##### 2. Rate the appropriate sequence of the courses provided in the curriculum.

Excellent	Very Good	Good	Average	Poor
60	24	16	10	2



  
PRINCIPAL  
RISE KRISHNA SAI PRAKASAM  
GROUP OF INSTITUTIONS  
VALLUR - ONGOLE

**RISE KRISHNA SAI PRAKASAM GROUP OF INSTITUTIONS:: ONGOLE**

(Approved by AICTE-NEW DELHI, Affiliated to JNTUK KAKINADA)

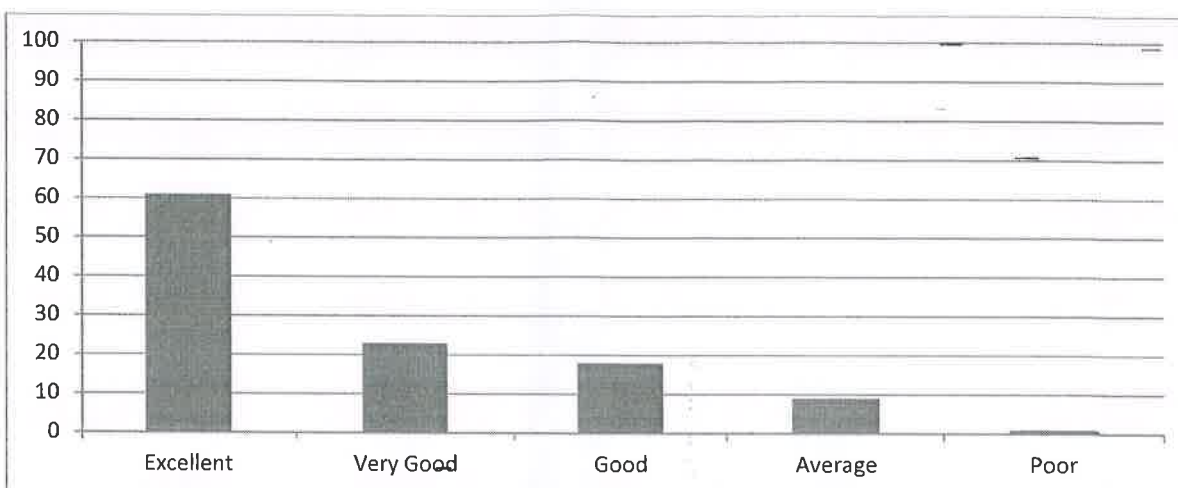
(An ISO 9001:2015 certified Institute)

NH-16, Valluru-523272, Ongole, Prakasam (District), A. P



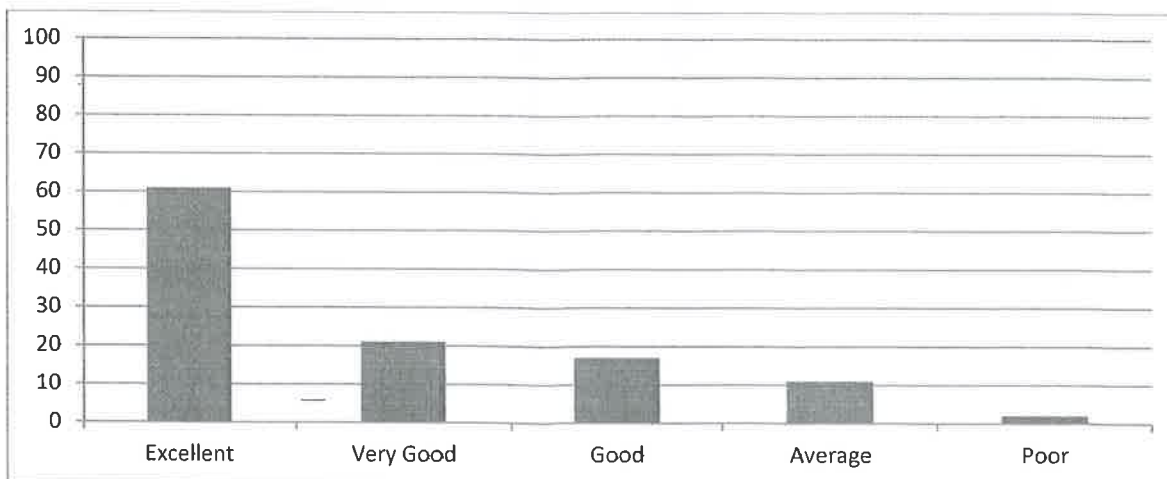
**3. Rate the depth of the syllabus of courses concerning the competencies expected by industry/current global scenarios.**

Excellent	Very Good	Good	Average	Poor
61	23	18	9	1



**4. Rate the sequence of the units/modules in courses.**

Excellent	Very Good	Good	Average	Poor
61	21	17	11	2



  
PRINCIPAL  
RISE KRISHNA SAI PRAKASAM  
GROUP OF INSTITUTIONS  
VALLUR - ONGOLE



## RISE KRISHNA SAI PRAKASAM GROUP OF INSTITUTIONS:: ONGOLE

(Approved by AICTE-NEW DELHI, Affiliated to JNTUK KAKINADA)

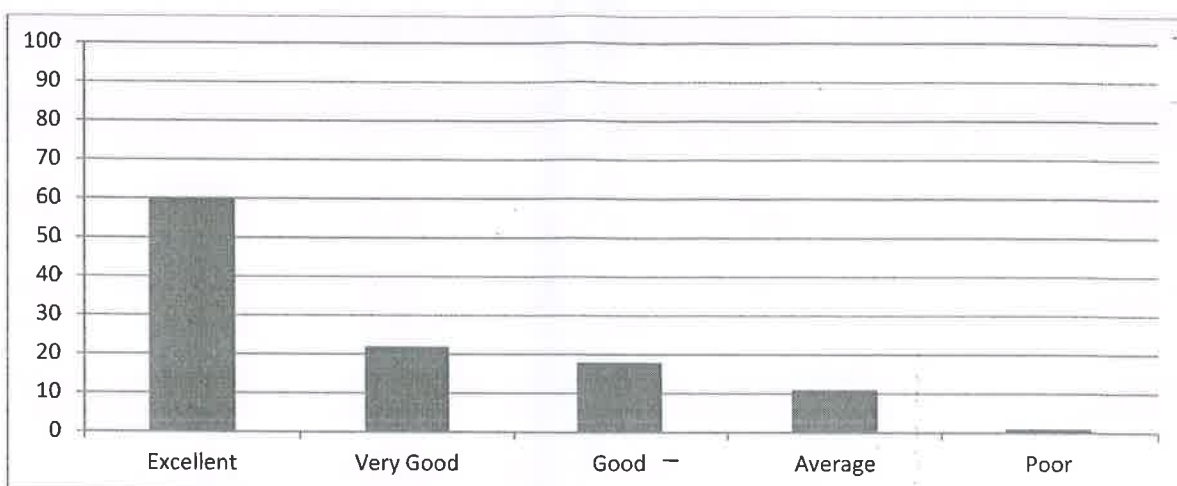
(An ISO 9001:2015 certified Institute)

NH-16, Valluru-523272, Ongole, Prakasam (District), A. P



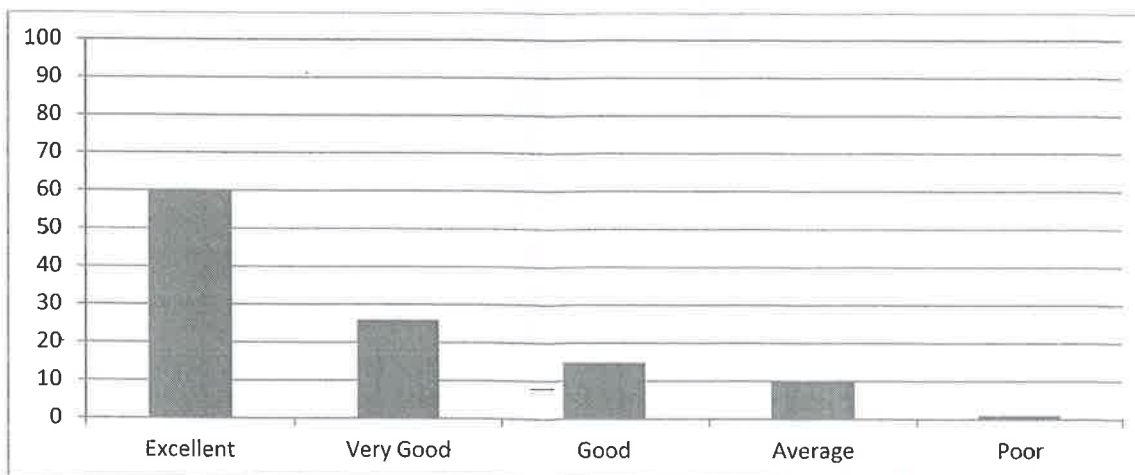
### 5. Rate the adequateness of the prescribed text books and reference books mentioned for the courses.

Excellent	Very Good	Good	Average	Poor
60	22	18	11	1



### 6. Rate the syllabus content of the courses in terms of the burden on students.

Excellent	Very Good	Good	Average	Poor
60	26	15	10	1



  
PRINCIPAL  
RISE KRISHNA SAI PRAKASAM  
GROUP OF INSTITUTIONS  
VALLUR - ONGOLE



**RISE KRISHNA SAI PRAKASAM GROUP OF INSTITUTIONS:: ONGOLE**

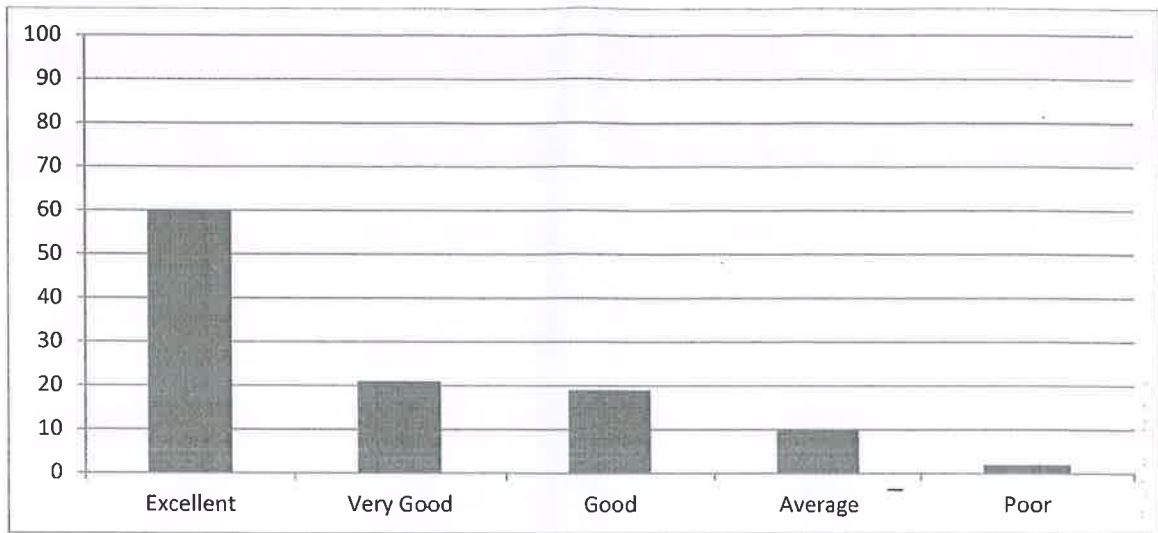
(Approved by AICTE-NEW DELHI, Affiliated to JNTUK KAKINADA)

(An ISO 9001:2015 certified Institute)

NH-16, Valluru-523272, Ongole, Prakasam (District), A. P

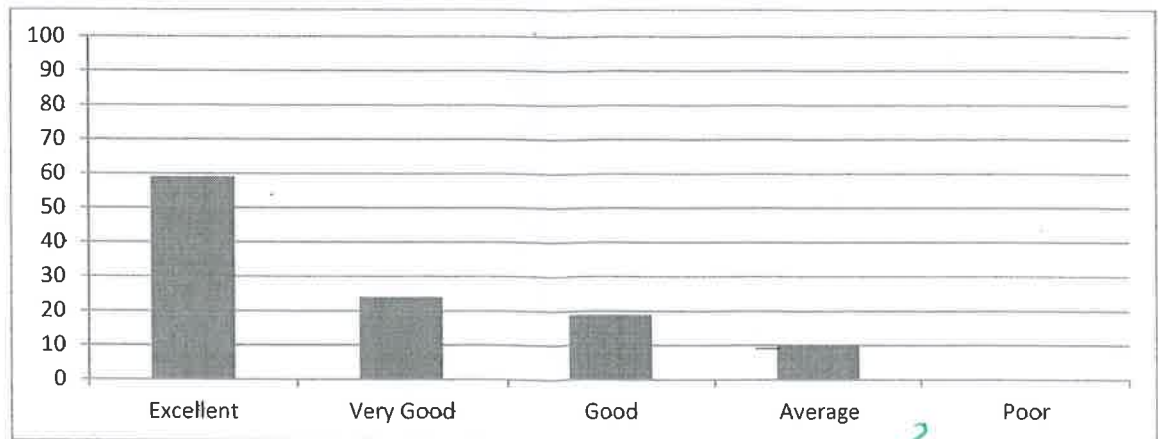
**7. Rate the design of courses in terms of extra learning or self-learning.**

Excellent	Very Good	Good	Average	Poor
60	21	19	10	2



**8. Rate the flexibility in choosing the elective courses concerning technology advancements.**

Excellent	Very Good	Good	Average	Poor
59	24	19	10	0



*[Handwritten Signature]*  
**PRINCIPAL  
RISE KRISHNA SAI PRAKASAM  
GROUP OF INSTITUTIONS  
VALLUR - ONGOLE**



**RISE KRISHNA SAI PRAKASAM GROUP OF INSTITUTIONS:: ONGOLE**

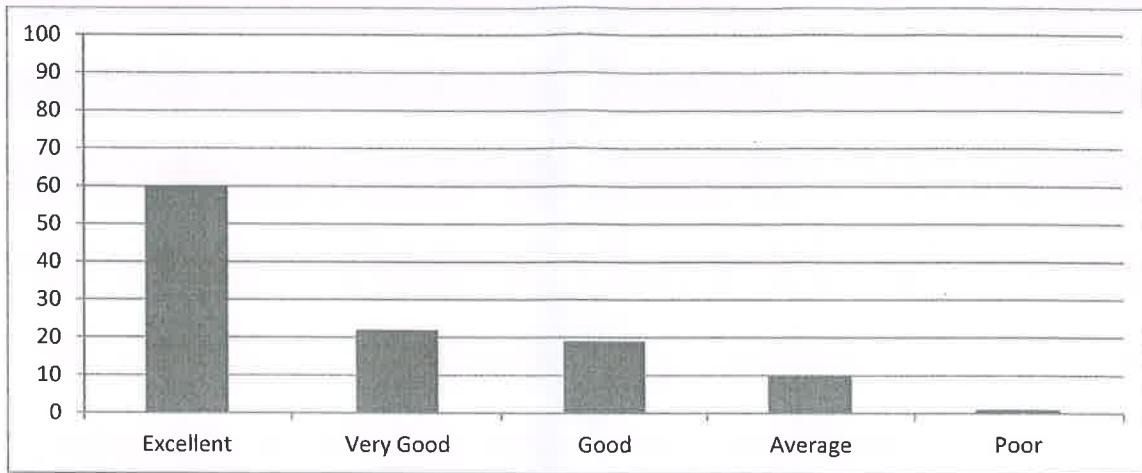
(Approved by AICTE-NEW DELHI, Affiliated to JNTUK KAKINADA)

(An ISO 9001:2015 certified Institute)

NH-16, Valluru-523272, Ongole, Prakasam (District), A. P

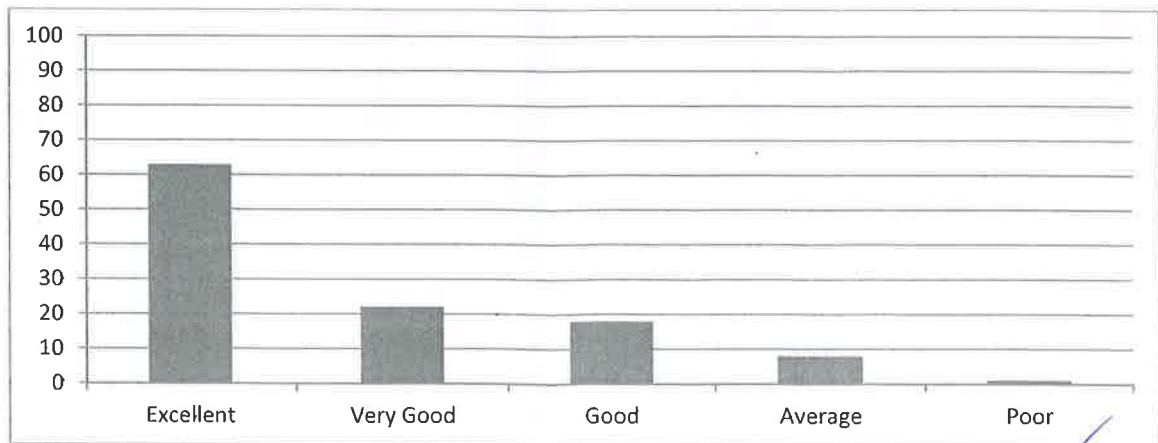
**9. Rate the percentage of courses offering LAB components.**

Excellent	Very Good	Good	Average	Poor
60	22	19	10	1



**10. Rate the composition of courses in terms of Basic Sciences, Engineering science, Humanities, Discipline core, discipline elective, open elective, project, etc.?**

Excellent	Very Good	Good	Average	Poor
63	22	18	8	1



*[Handwritten signature in green ink]*

**PRINCIPAL  
RISE KRISHNA SAI PRAKASAM  
GROUP OF INSTITUTIONS  
VALLUR - ONGOLE**

*[Handwritten signature in blue ink]*  
HOD

**HEAD OF THE DEPARTMENT  
Dept. of Computer Science & Engineering  
RISE Krishna Sai Prakasam Group of Institutions  
Valluru (V), Ongole**