

RISE KRISHNA SAI GANDHI GROUP OF INSTITUTIONS

DEPARTMENT OF SCIENCE AND HUMANITIES

**A REPORT
ON
INDUSTRIAL VISIT**

15-02-2015

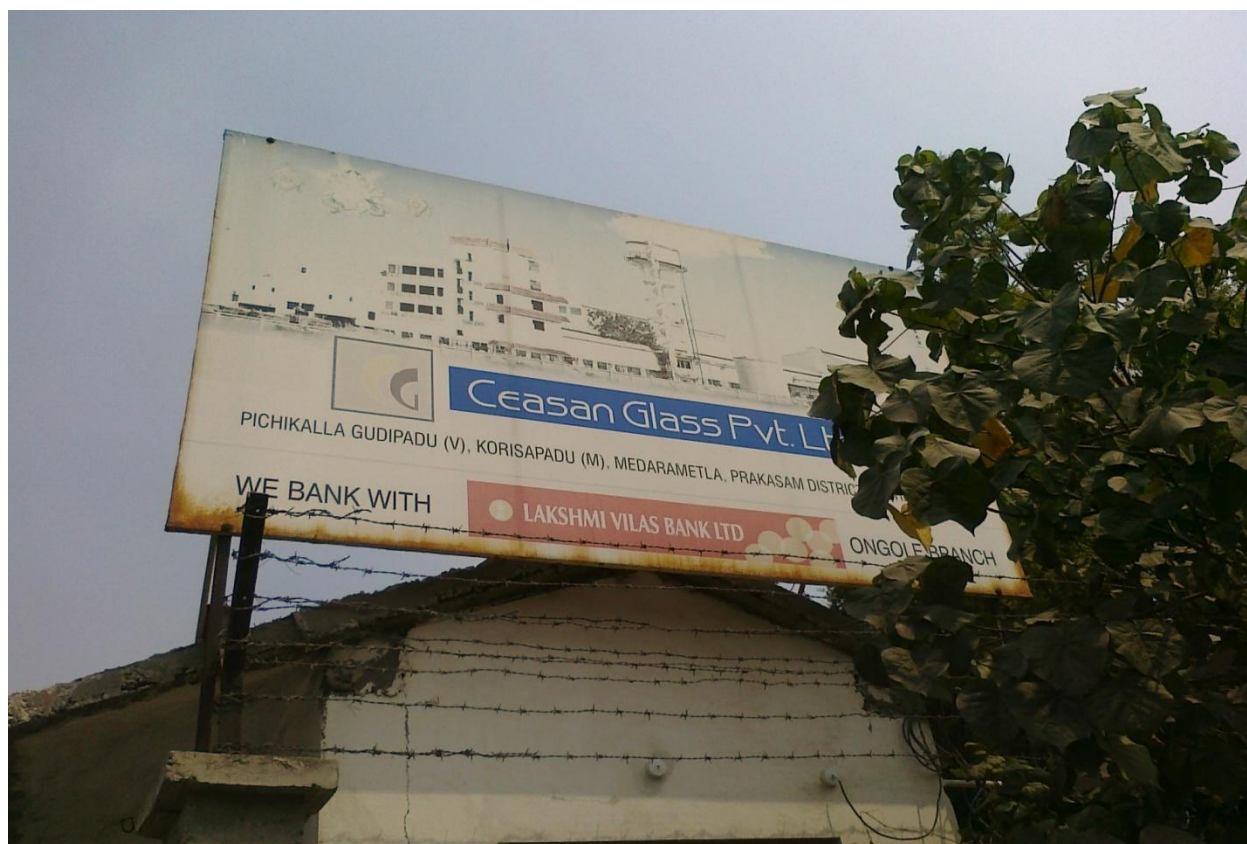


**(Approved by AICTE, Affiliated to JNTU, Kakinada)
NH-5, Valluru,-523272, Ongole, Prakasam District**

REPROT ON INDUSTRIAL VISIT

We receive the letter of permission from CEASON GLASS FACTORY ,MADERAMETLA 100 students with 7 faculty members i.e., U.MohanChand, K.Sai Prasanna,K.Chandrika,K.Padmaja,Ch.Siva Jyothi ,N.V Siva Rao, G.Venkateswarlu went to industrial visit to the factory on 15-02-2015.

We are assemble at the college at 10 A.M and left the college by bus we reached the factory at 11.30 A.M. The chemical engineer, incharge of R&D received us at the entrance and gave a brief information about the factory.And he allotted us one session to observe the factory. And explain the process involved in the preparation of Alcohol .The workers are doing their work concentratedly . Everyone has wear safety clothes.



CAESON GLASS FACTORY::KORISIPADU,MEDARAMETLA



STUDENTS GATHERED AT CEASON'S GLASS FACTORY

He showed which type of raw materials are used bottle clay ,fell spar,sodaash,wood dust,lime stone. The main raw material is bottle clay is obtained from waste glass pieces. First, the glass pieces are washed with water and that is passed through a conveyor belt to grinder. And limestone is crushed into a powder and add all the raw materials into a certain proportions and passed it to a conveyor belt to grinder. The mixture is mixed well in the grinder. That

mixture is passed through conveyor belt to furnace. The temperature maintained at this furnace is nearly 2000 degree centigrade. At this temperature the mixture is melt into a fluid.

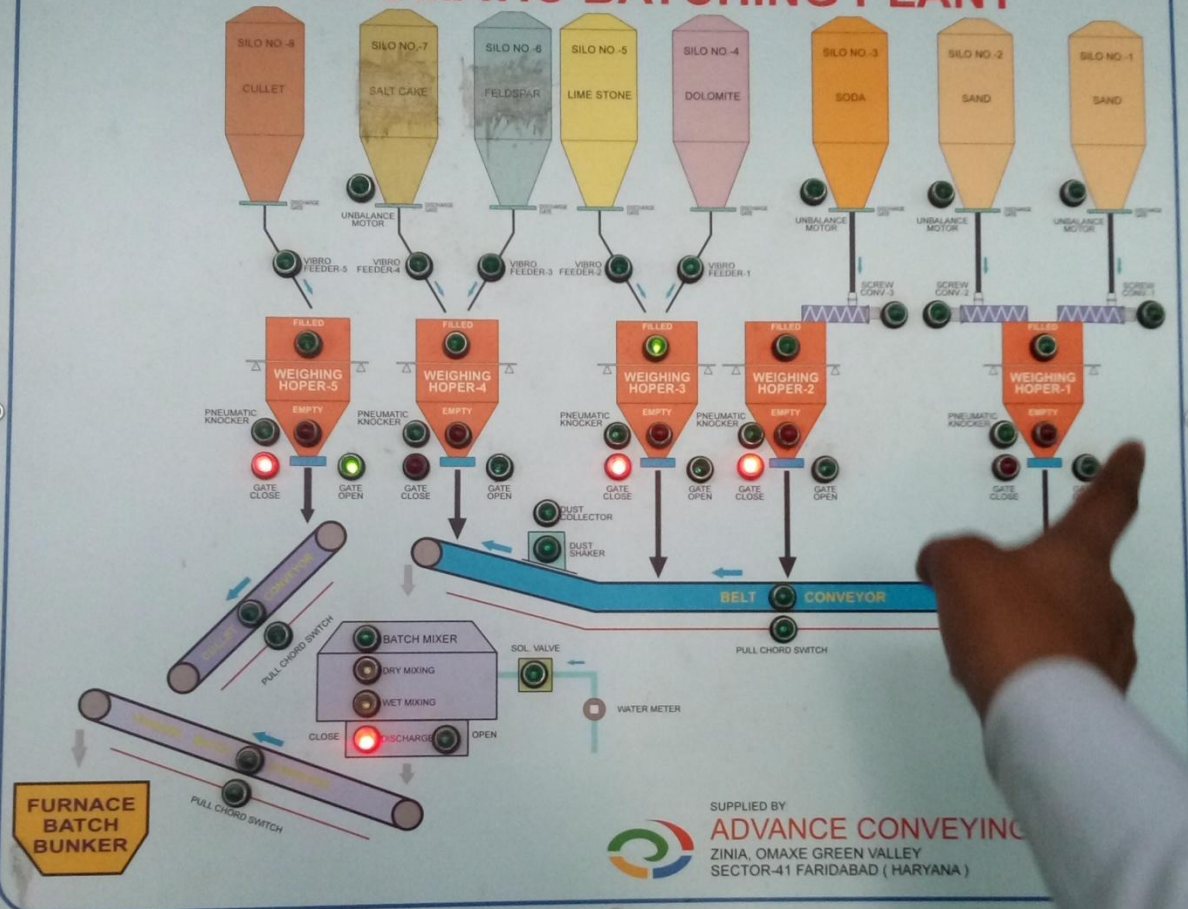


MIXING HOPPERS



MIXING HOPPERS

AUTOMATIC BATCHING PLANT





LOAD CONTROLLERS



FURNACE

The temperature maintained at this furnace is nearly 2000 degree centigrade



THE OUTCOMING OF PREPARED GLASS FROM FURNACE (TEMPERATURED GLASS)

And is passed into a suitable mould tray. The tray is moved away from the furnace at that time the cold water or cold air blown under the tray to the moulds. After completion of the cooling process the glass is obtained. Then, for a test the prepared glass is broken into pieces to examine the proportions of the mixture content. And the broken pieces pass again through conveyor belt into furnace. For the maintains of heat at furnace the using materials are coal& furnace oil. After completion of the testing the desired glass is obtained. That can be transport now.





THE OUTCOMING OF PREPARED GLASS FROM FURNCE (COOLED GLASS)



THE OUTCOMING OF PREPARED GLASS FROM FURNCE (COOLED GLASS)



GLASS DESIGNING ROLLS MACHINE



GLASS DESIGNING ROLLS MACHINE



The H.O.D and the Chemistry faculty are giving gifts to the Management of ceason Glass Factory for their valuable support.

students got the awareness By this is how the waste glass is also used, About the furnace,and they also pickedup the different designed glasses which was made in the Ceason glass industry.